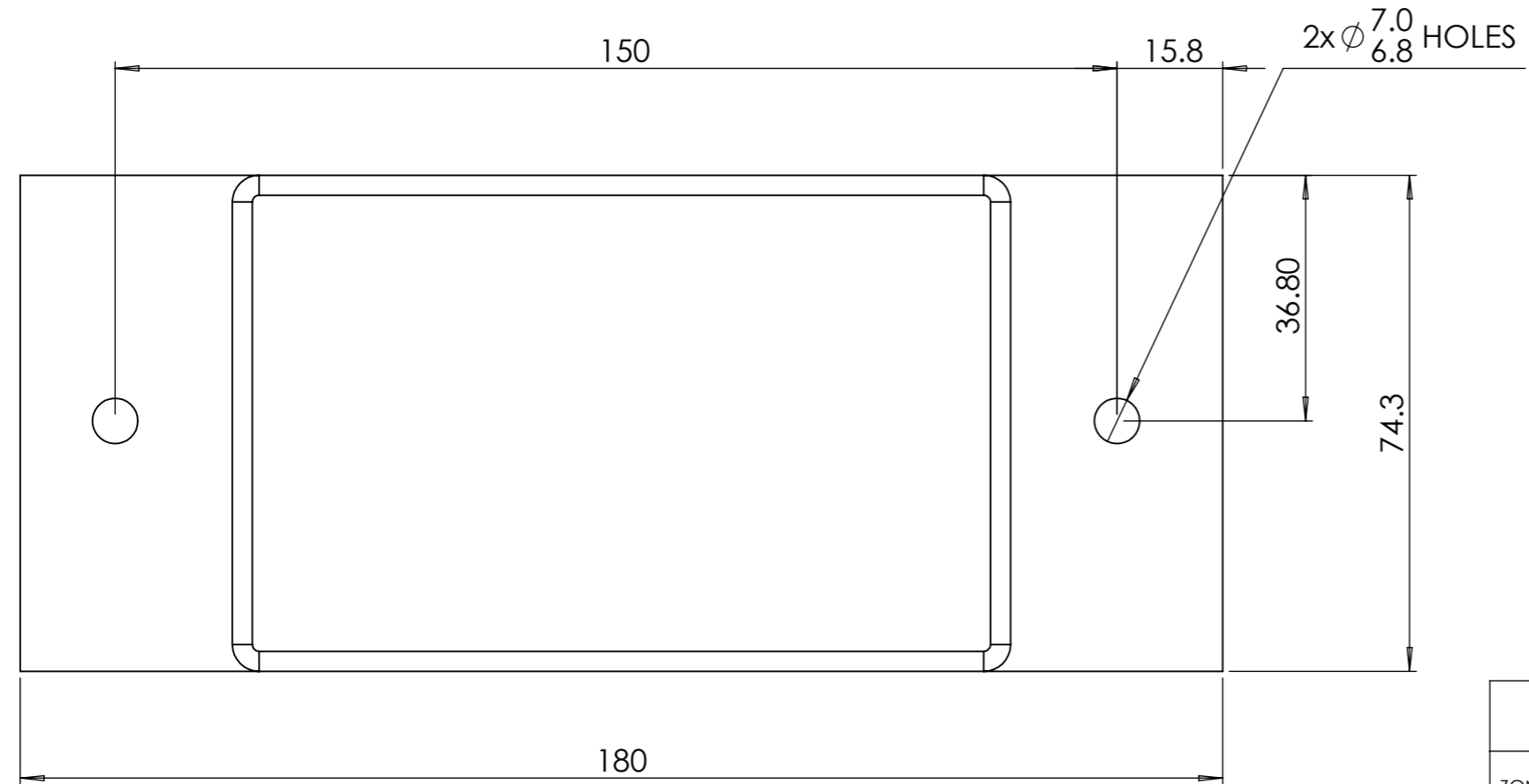
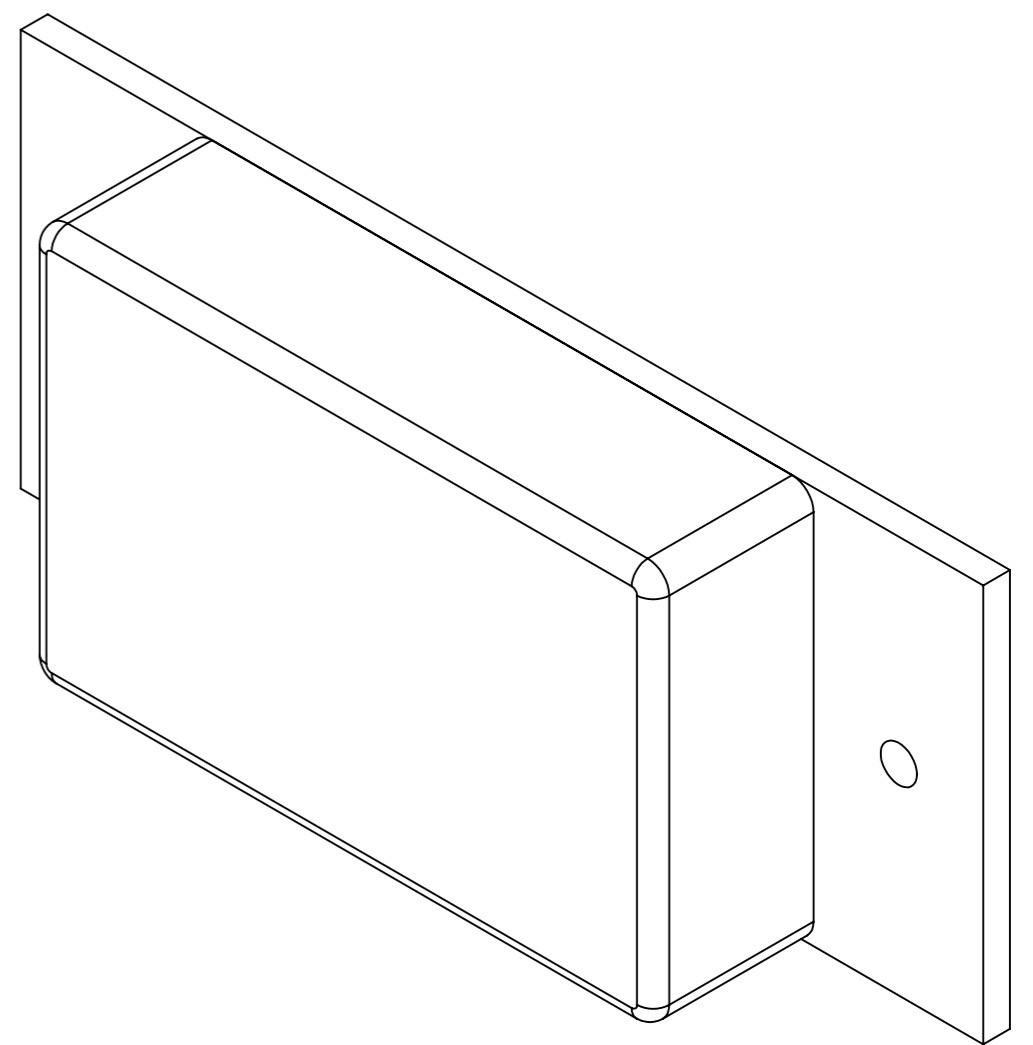
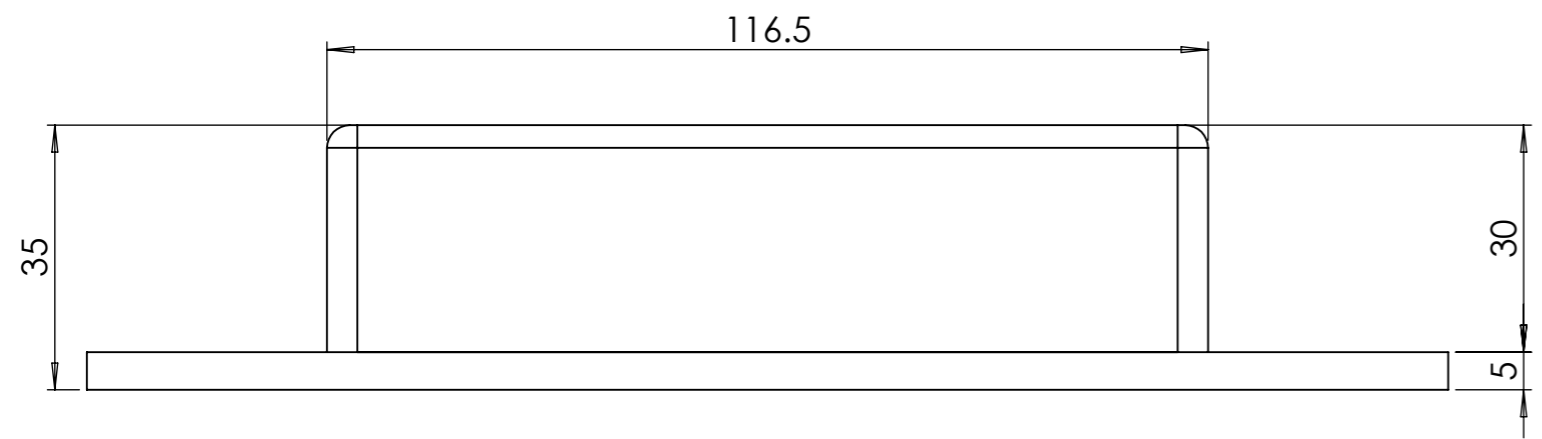


A  
B  
C  
D  
E  
F

A  
B  
C  
D  
E  
F



ZONE	REV.	DESCRIPTION	DATE	APPROVED
	1	VALIDATION COMPLETE	19/12/2024	A.P

REVISIONS

NOTE:  
BLACK SYNTHETIC RUBBER BONDED ON A  
NATURAL ALUMINIUM PLATE.

UNLESS OTHERWISE STATED, ALL DIMENSIONS IN mm

TOLERANCES		SURFACE FINISH 1.6µm Ra	
0.5 - 6	= ±0.1mm	FILLET RADII	0.5 TO 1.0
6 - 30	= ±0.2 mm	SQUARENESS	0.05 IN 25
30 - 120	= ±0.3 mm	PARALLELISM	0.05 IN 25
120 - 400	= ±0.5 mm	RUNOUT	0.1
400 - 1000	= ±0.8 mm	ANGLES	±0.5°
1000 - 2000	= ±1.2 mm		
2000 - 4000	= ±2.0 mm		

MATERIAL: SEE NOTE	DRAWN BY: SR		DESCRIPTION: TIPPER PAD		A3
MASS: 0.31KG	CHECKED BY: AP				
FINISH: SEE NOTE	APPROVED BY: AP	NUMBER: 9922-106	REVISION: 1	SHEET: 1 of 1	
ORIGINATION DATE: 19/12/2024		SCALE : PROPORTIONAL - DO NOT SCALE REF SCALE 1:1 WHEN PRINTED ON A3			PROJECTION 3rd ANGLE



PROPRIETARY RIGHTS ARE INCLUDED IN THE INFORMATION DISCLOSED HEREIN. NEITHER THIS DOCUMENT NOR ANY INFORMATION DISCLOSED SHALL BE REPRODUCED, USED, TRANSFERRED TO OTHER DOCUMENTS, OR DISCLOSED TO OTHERS FOR ANY PURPOSE INCLUDING MANUFACTURING UNLESS SPECIFICALLY AUTHORIZED IN WRITING  
REMOVE ALL SHARP EDGES AND BURRS  
PART FINISHING AND MARKING TO CESF001