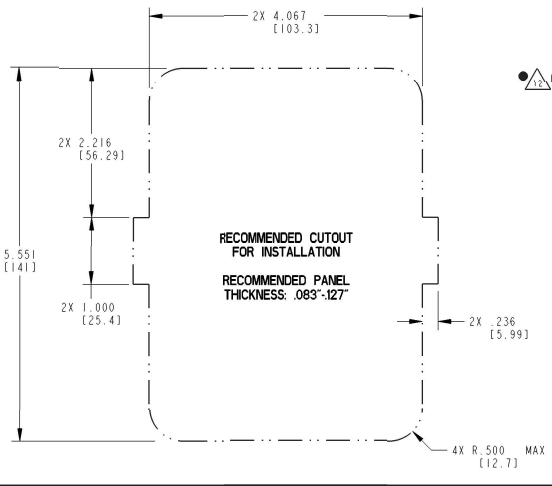
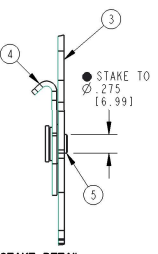
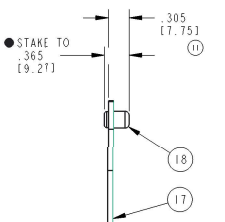
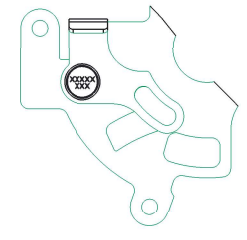
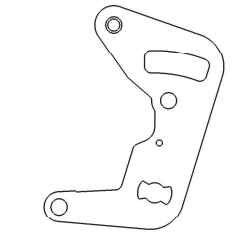
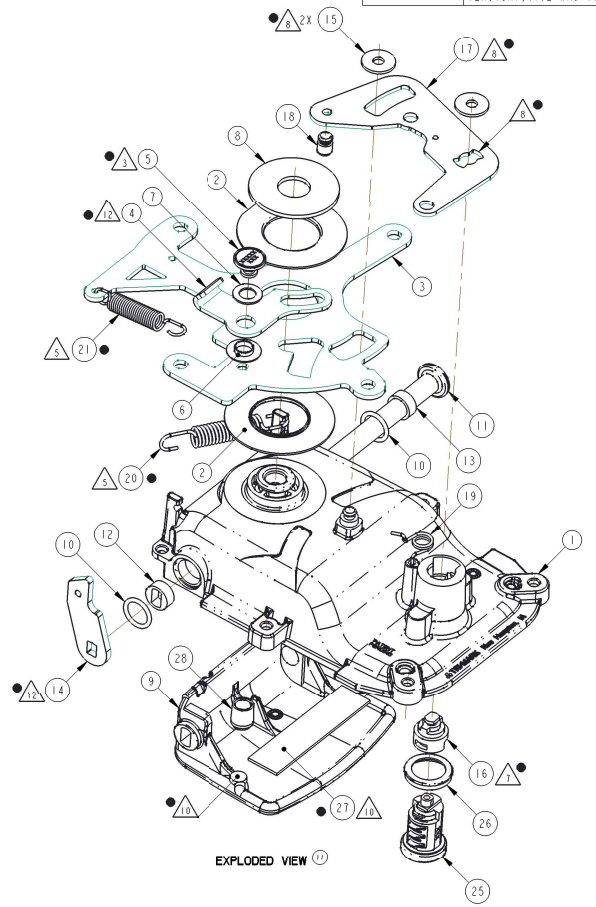


REVISION	ECN	ECN BY	DESCRIPTION
8	39380	3/22/13	ADDED -.06 VERSION
9	39083	4/25/13	-06 (LKCYL) 16014-02-1001 WAS 16014-01-1001 (KEY) N/A WAS 16169-02-1001. ADDED SCALP STAMP/STYLE VIEW.
10	39338	6/14/13	ADDED -.08 VERSION; REMOVED FLAG NOTE FROM ITEM 3; ADDED FLAG NOTE TO ITEM 4
11	39530	8/16/13	DELETED ITEM 22, 23, 24, 135, NOTE 1, 8; ADDED .305, FLAG NOTE 8 TO VIEW; UPDATED REF DIMS, FINISH ON -.04, -.06, NOTE 2, 7, 8; 35472-01 WAS 30957-02;
12	39628	9/24/13	ADDED -.10 VERSION
13	39824	10/21/13	ADDED -.11 & -.12 VERSION; UPDATED -.10 DESCRIPTION
14	39969	11/20/13	ADDED -.09 VERSION, NOTE 1, 3; ADDED TEXT TO APPLICABLE VERSIONS ONLY (08 VERSION); 9002 WAS 1001.



<p>● INDICATES REQUIRED ASSEMBLY INFORMATION</p> <p>NOTE: THE .00 VERSION SHALL BE THE UNFINISHED VERSION OF PART SHOWN</p> <p>USE ALL DIMENSIONS UNLESS OTHERWISE SPECIFIED</p>		<p>DRAWN BY: JFB 2011-08-12</p> <p>CHECKED BY: CRZ 2013-07-29</p> <p>PROJECT: 11095 PRODUCT CODE: C66 (030-1875)</p>		<p>580 Bailey Avenue P. O. Box 308 New Hampton, Iowa 50659 U.S.A. Tel: 641-394-5100 Fax: 641-394-2392</p>	
<p>UNLESS OTHERWISE SPECIFIED, USE:</p> <p>ASME Y14.5M-1994</p> <p>FINISH: MILL</p> <p>X.X = ±.01 X.XX = ±.005</p> <p>X.XXX = ±.001 X.XXX = ±.0005</p>		<p>CUSTOMER</p> <p>CUSTOMER PART NUMBER</p>		<p>DESCRIPTION</p> <p>SEE BOM</p>	
<p>DO NOT SCALE DRAWING</p> <p>REF: 1/4 OF 4-20-12 FOR SHIP QUALITY REQ.</p> <p>REF: 1/4 OF 4-20-12 FOR INV. QUALITY REQ.</p>		<p>PART WEIGHT (2.15 LB)</p> <p>SURFACE AREA</p>		<p>SIZE D</p> <p>SCALE 1.0</p> <p>SHEET 1/2</p> <p>PART NUMBER 30940</p>	

16	15	14	13	12	11	10	9	8	7	6	5	4	3	2	1															
PART NUMBER DESCRIPTION	ITEM 1 HOUSING (QTY)	ITEM 2 BUSHING (QTY)	ITEM 3 PLATE (QTY)	ITEM 4 PIVOT (QTY)	ITEM 5 RIVET (QTY)	ITEM 6 BUSHING (QTY)	ITEM 7 WASHER (QTY)	ITEM 8 WASHER (QTY)	ITEM 9 PADDLE (QTY)	ITEM 10 O-RINGS (QTY)	ITEM 11 AXLE (QTY)	ITEM 12 BUSHING (QTY)	ITEM 13 BUSHING (QTY)	ITEM 14 DRIVE (QTY)	ITEM 15 WASHER (QTY)	ITEM 16 ACTR (QTY)	ITEM 17 LCK CAM (QTY)	ITEM 18 RIVET (QTY)	ITEM 19 OC SPR (QTY)	ITEM 20 SPRING (QTY)	ITEM 21 SPRING (QTY)	ITEM 25 LCKYL (QTY)	ITEM 26 GASKET (QTY)	ITEM 27 TAPE (QTY)	ITEM 28 BUMPER (QTY)	ITEM 29 KEY (QTY)	ITEM 30 FILM (QTY)	FINISH 	DIM "A"	PART MARKING
30940-01 030-1875, LGB, RH, 1022, 4PT PVTPL, Ø .237, 2PT LK CAM	30941-01 (1)		32413-01 (1)						33855-01 (1)													16014-02-1022 (1) [1022]				16169-02-1022 (1)	N/A	PAINT, BLACK, LOW GLOSS	Ø .237	
30940-02 030-1875, CNNC, RH, 1022, 4PT PVTPL, Ø .237, 2PT LK CAM	30941-02 (1)																					16014-02-2002 (1) [2002]				N/A	PLATE, COPPER-NICKEL- NICKEL-CHROME	Ø .250		
30940-03 030-1875, CNNC, RH, 2002, 4PT PVTPL, Ø .250, 2PT LK CAM			32413-02 (1)																			16014-02-1022 (1) [1022]				16169-02-1022 (1)	20711-01 (1)	HSG-PAINT, BLACK, LOW GLOSS PDL-PLATE, COPPER-NICKEL- NICKEL-CHROME		
30940-04 030-1875, LGB/CNNC, RH, 1022 4PT PVTPL, Ø .237, 2PT LK CAM									33855-02 (1)													16014-02-1001 (1) [1001]				N/A				
30940-06 030-1875, LGB/CNNC, RH, 1001 4PT PVTPL, Ø .237, 2PT LK CAM		30944-01 (2)		30949-01 (1)	23762-01 (1)	16685-01 (1)	15951-01 (1)	30945-01 (1)		30947-01 (2)	30951-01 (1)	80796 (1)	80797 (1)	30948-01 (1)	81773-15 (2)	16022-01 (1)	30961-01 (1)	30833-01 (1)	80719-57 (1)	25614-01 (1)	33581-01 (1)	16025-01 (1)	20058-01 (1)	35472-01 (1)						
30940-08 030-1875, LGB/CNNC, RH, 9002 4PT PVTPL, Ø .237, 2PT LK CAM	30941-01 (1)																					16014-92-9002 (1) [9002]				14472-02-1003 (1)	N/A	PAINT, BLACK, LOW GLOSS	Ø .237	
30940-09 030-1875, LGB, RH, 2002, 4PT PVTPL, Ø .237, 2PT LK CAM			32413-01 (1)																			16014-02-2002 (1) [2002]								
30940-10 030-1875, LGB/CNNC, RH, TM202, 4 PT PVTPL																						16014-92-9013 (1) [TM 202]								
30940-11 030-1875, CNNC, RH, 4PT PVTPL, Ø .237, 2PT LK CAM	30941-02 (1)																					31684-01 (1)					20711-01 (1)	PLATE, COPPER-NICKEL- NICKEL-CHROME		
30940-12 030-1875, LGB, RH, 1001, 4PT PVTPL, Ø .237, 2PT LK CAM	30941-01 (1)																					16014-02-1001 (1) [1001]					N/A	PAINT, BLACK, LOW GLOSS		

NOTES: UNLESS OTHERWISE SPECIFIED; (U)

- (U) KEY (ITEM 29) TO BE SEALED IN CORNER OF BAG.
- MARK RIVET (ITEM 5) WITH PART NUMBER AND DATE CODE PER ES-121. LOCATE APPROXIMATELY AS SHOWN. ORIENTATION IS NOT IMPORTANT.
- FINISH IS FOR REFERENCE ONLY.
- SPRING (ITEM 20 & 21) ORIENTATION IS NOT IMPORTANT.
- (U) APPLY ALPHA 2000 GREASE TO THE INNER DIAMETER OF LOCK CYLINDER HOLE AND ORIENT AS SHOWN, IN RELATION TO HOUSING (ITEM 1) WHEN HELD WITH LOCK CYLINDER END DOWN.
- (U) APPLY ALPHA 2000 GREASE IN TWO LOCATIONS, BETWEEN LOCK CYLINDER WASHER (ITEM 15) AND LOCK CAM (ITEM 17).
- HANDLE TO BE SHIPPED IN UNLOCKED POSITION AS SHOWN.
- MAKE SURE TAPE (ITEM 27) DOES NOT COVER POST ON PADDLE (ITEM 9)
- MAKE SURE O-RING (ITEM 10) IS NOT PINCHED BETWEEN HOUSING (ITEM 1) AND AXLE HEAD (ITEM 11) OR DRIVE (ITEM 14).
- MAKE SURE THERE IS A GAP BETWEEN THE DRIVE (ITEM 14) AND PIVOT (ITEM 4) WHEN ROTATING FROM THE LOCKED STATE TO UNLOCKED STATE.
- (U) APPLY PROTECTIVE FILM (ITEM 30), IN APPROXIMATE LOCATION SHOWN, TO APPLICABLE VERSIONS ONLY.

SHEET	SIZE	SCALE	PART NUMBER
2/2	D	1.0	30940
			REVISION
			14