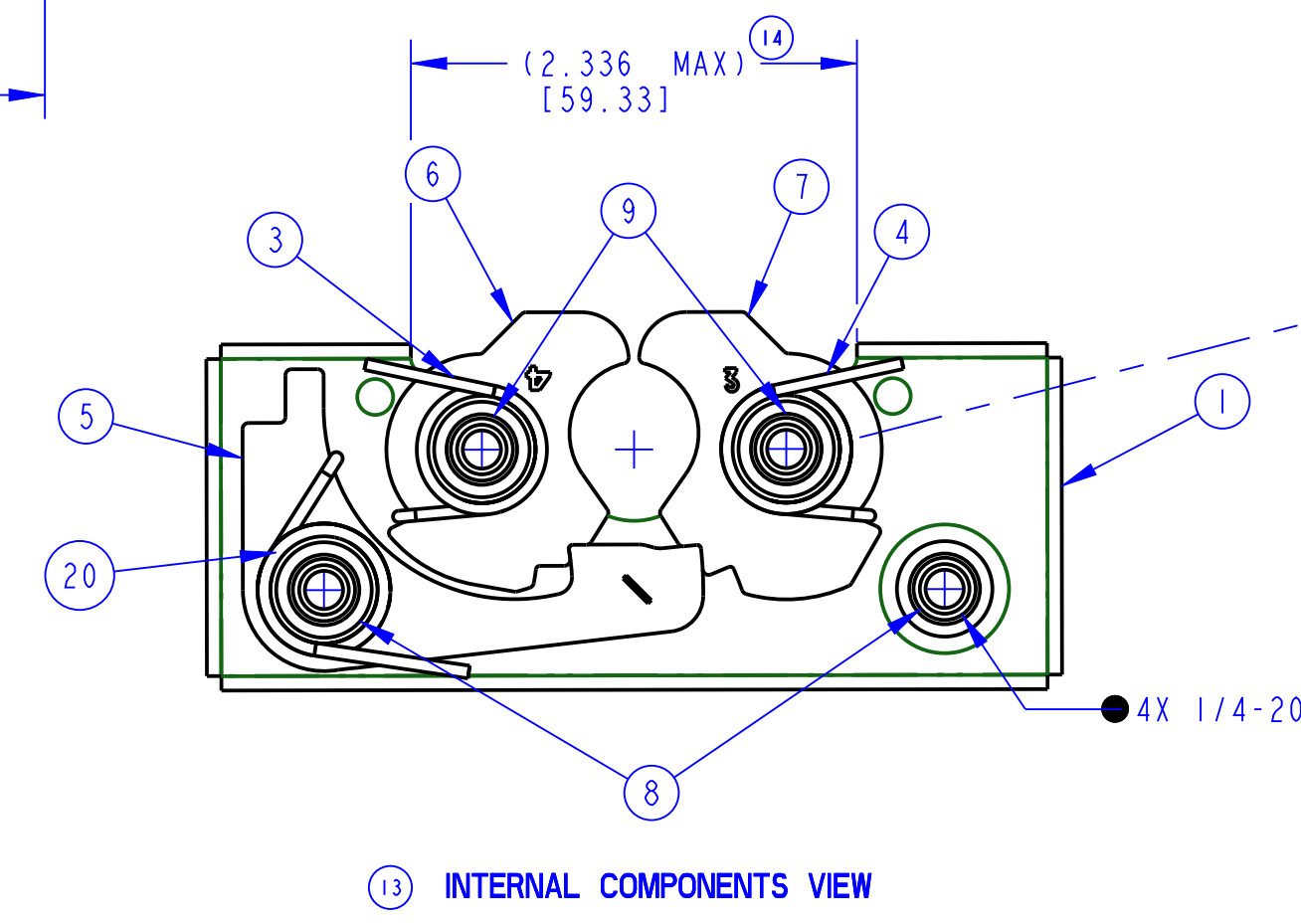
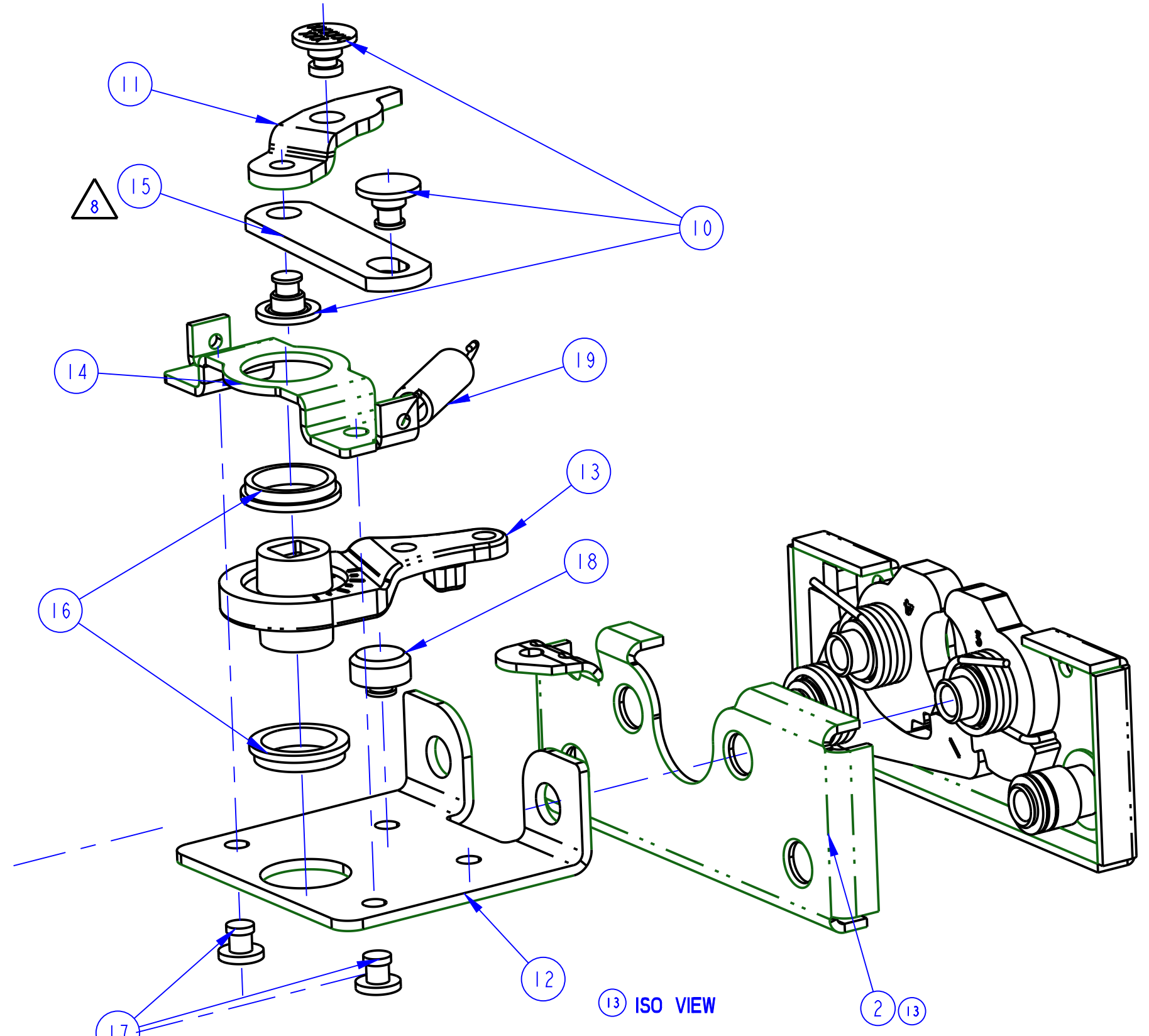
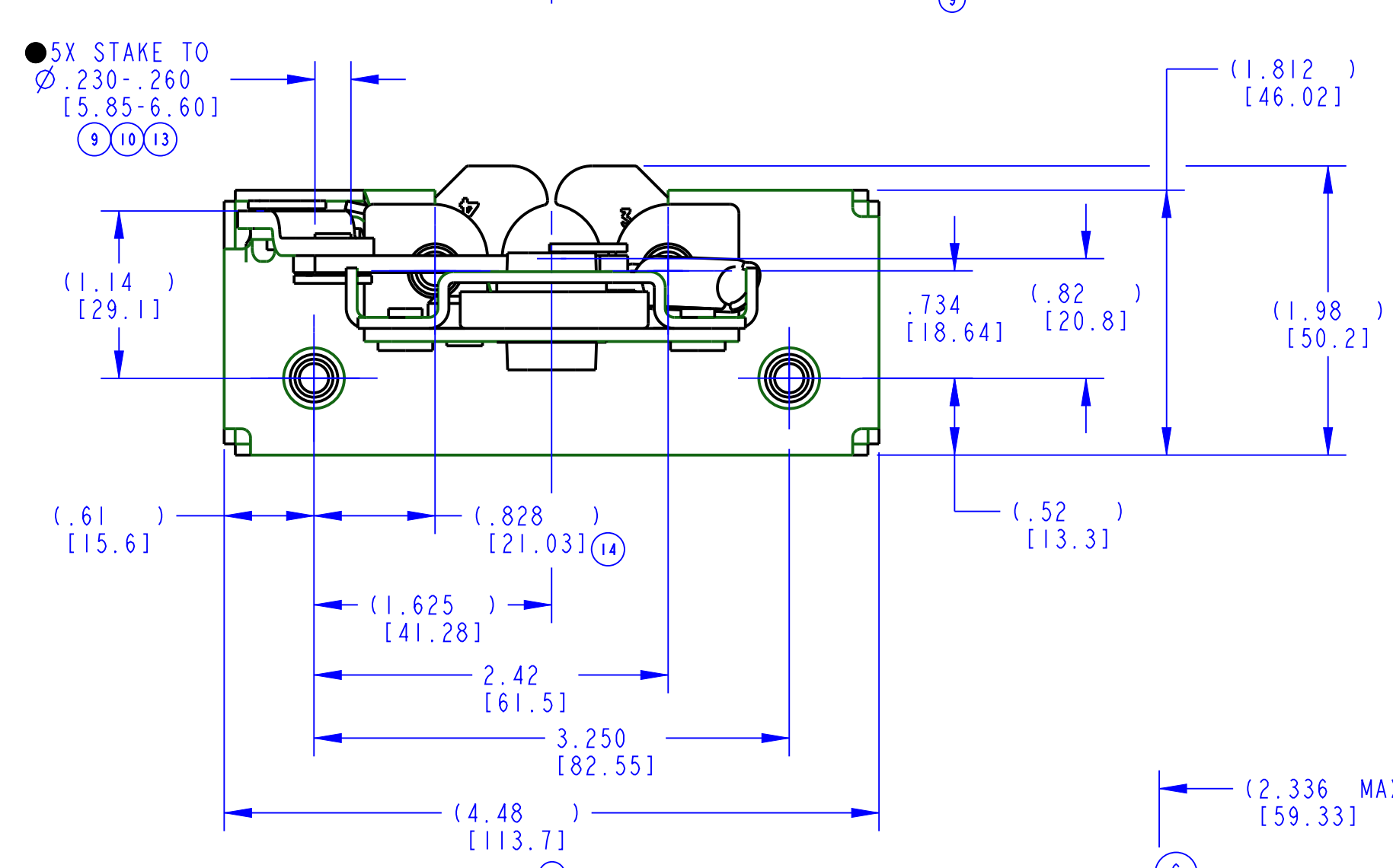
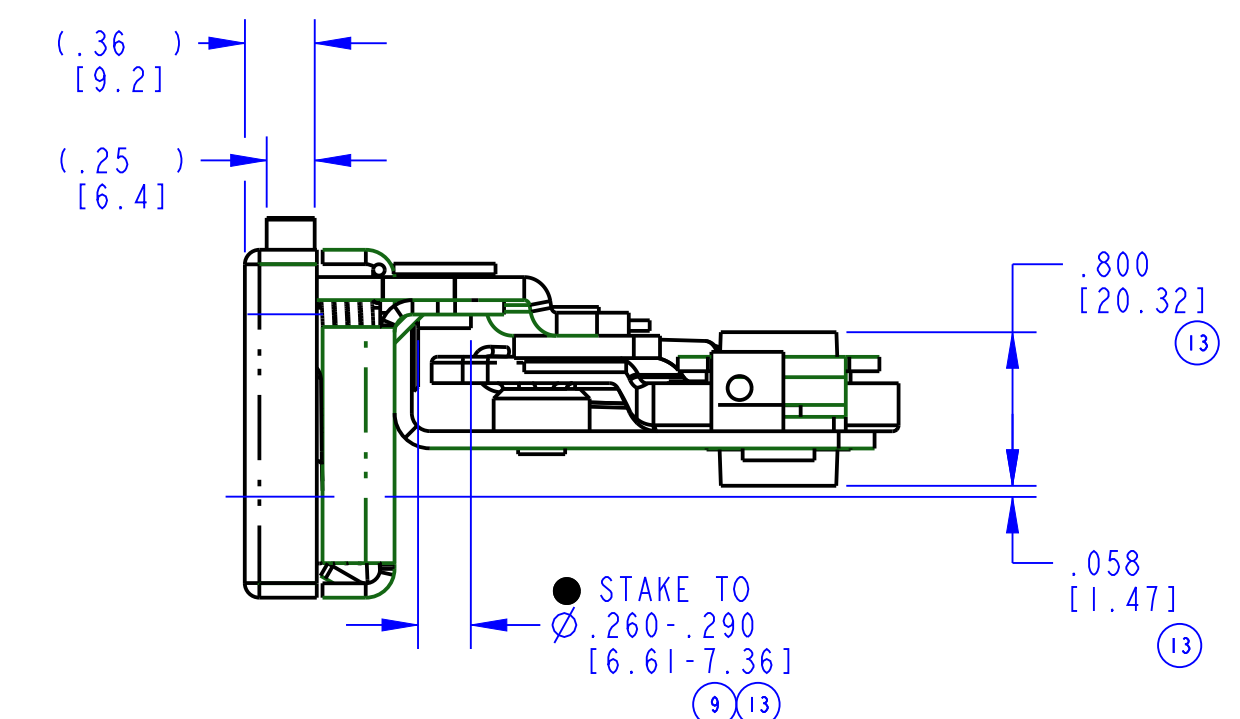
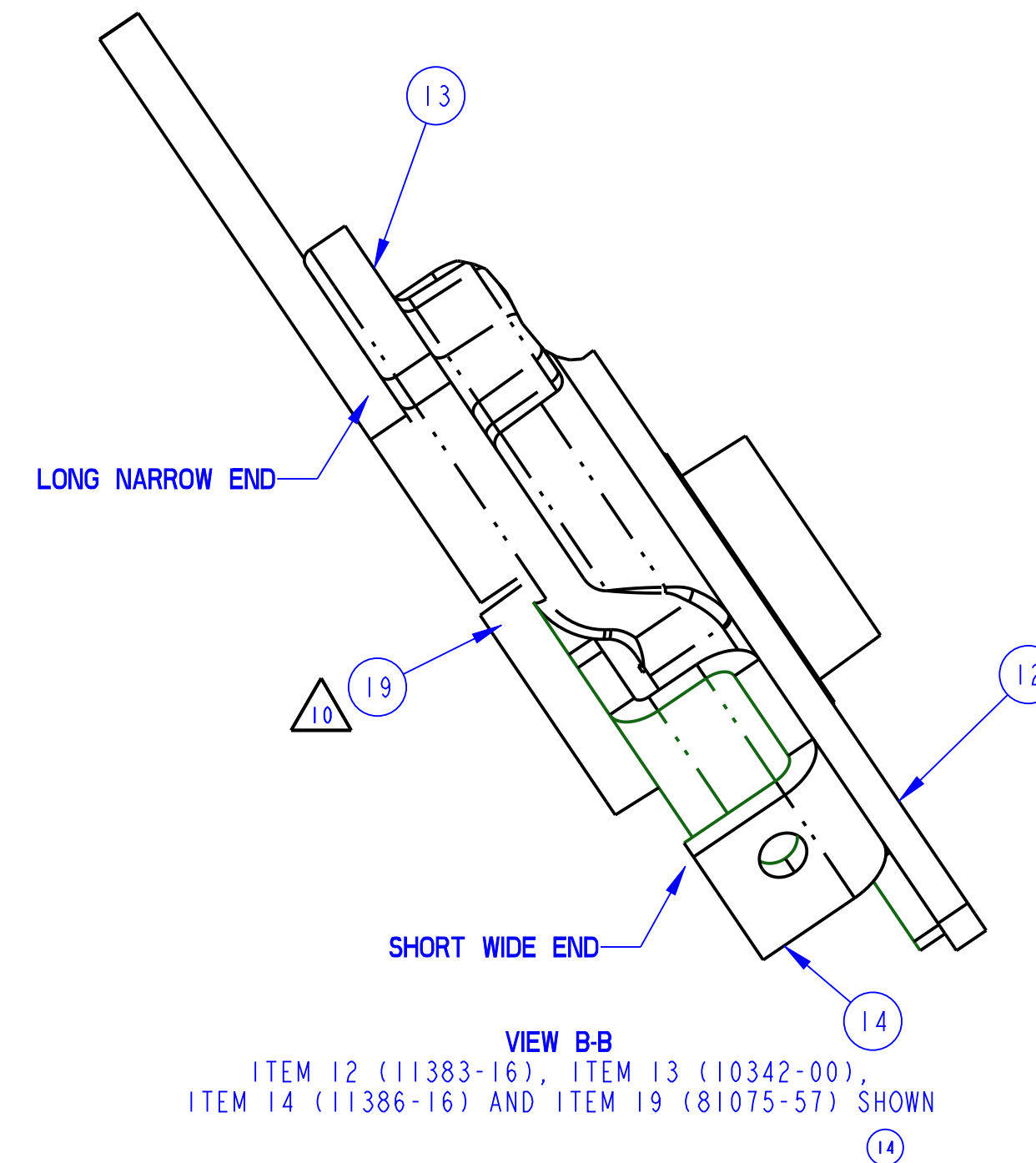
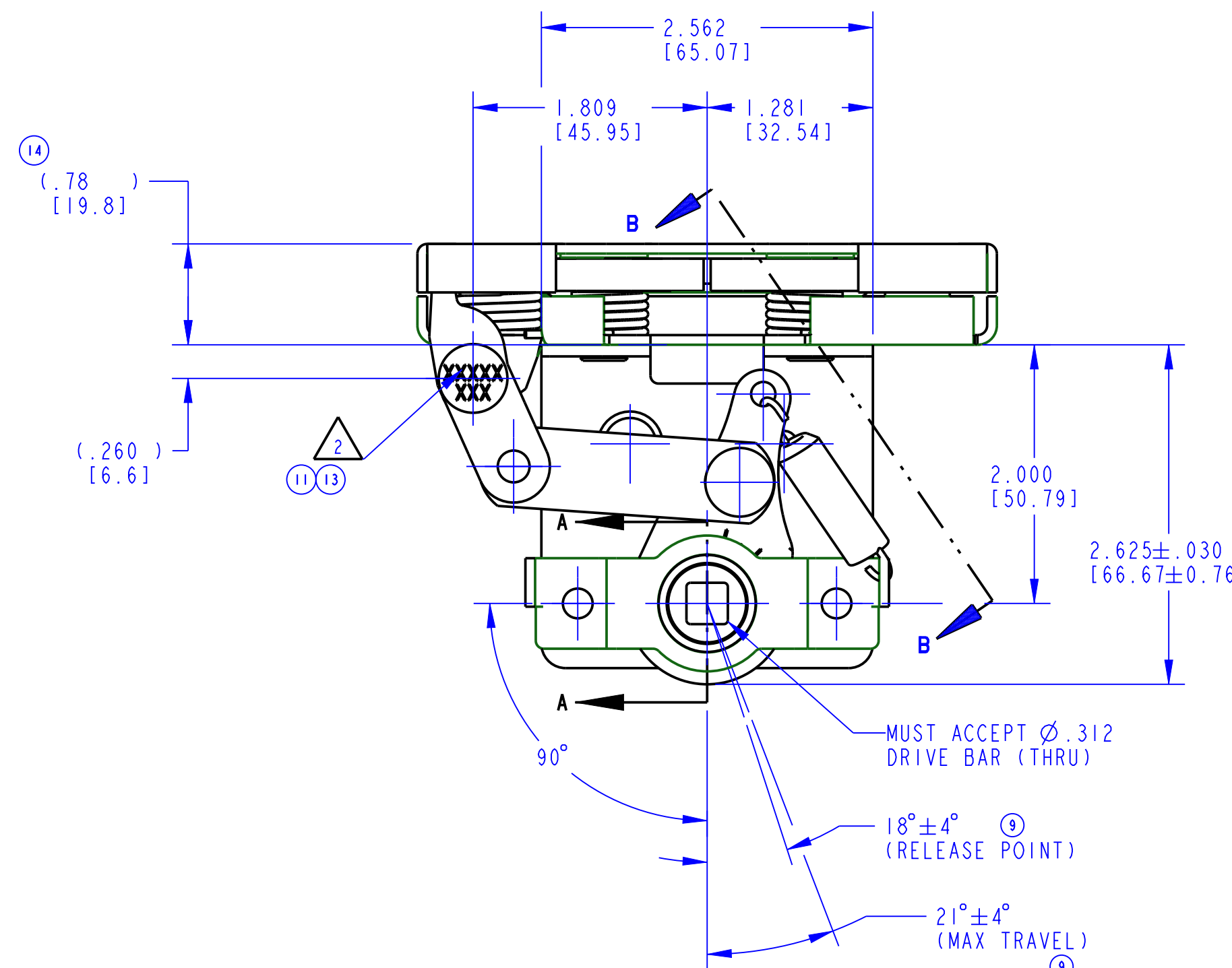
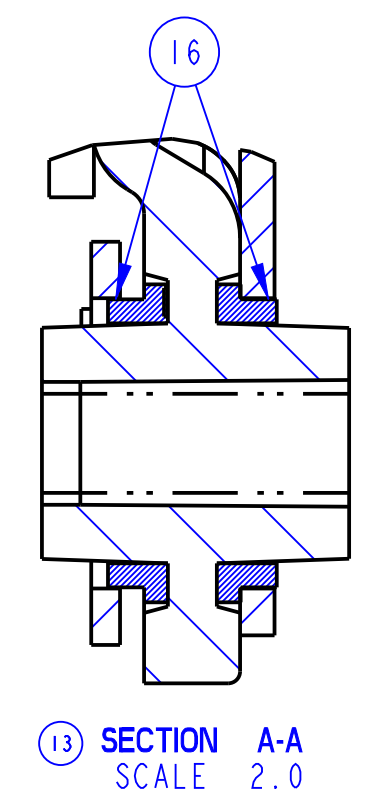


PART NUMBER	ITEM 1 PLATE (QTY)	ITEM 2 PLATE (QTY)	ITEM 3 SPRING (QTY)	ITEM 4 SPRING (QTY)	ITEM 5 CATCH (QTY)	ITEM 6 ROTOR (QTY)	ITEM 7 ROTOR (QTY)	ITEM 8 AXLE (QTY)	ITEM 9 AXLE (QTY)	ITEM 10 RIVET (QTY)	ITEM 11 LEVER (QTY)	ITEM 12 BRACKET (QTY)	ITEM 13 LINK (QTY)	ITEM 14 PLATE (QTY)	ITEM 15 LINKAGE (QTY)	ITEM 16 BUSHING (QTY)	ITEM 17 RIVET (QTY)	ITEM 18 STOP (QTY)	ITEM 19 SPRING (QTY)	ITEM 20 SPRING (QTY)	PART MARKING
11442-16	11439-16 (1)	11388-16 (1)	80853-00 (1)	80854-00 (1)	80631-26 (1)	81051-26 (1)	81052-26 (1)	81053-16 (2)	81055-16 (2)	80635-16 (3)	11392-16 (1)	11383-16 (1)	10342-00 (1)	11386-16 (1)	11397-16 (1)	80619-00 (2)	80601-15 (2)	81143-16 (1)	81075-57 (1)	19427-01 (1)	11442

REVISION	ECN	ECN BY	DESCRIPTION
9	8307	JPS 8/23/84	REDRAWN ON CAD, 4.478±.030 WAS 4.485±.030, 21°±4° WAS 21°±2°, 18°±4° WAS 18°±2°; REORDERED NOTES 6X Ø.230/.260 AFTER STAKING WAS Ø.230/.260 AFTER STAKING (5 PLACES)
10	10999	ASP 9/19/99	80635-16 WAS 80613-16; ADDED LEFT VIEW; 5X Ø.230-.260 WAS 6X Ø.230-.260; DELETED ROW 15 AND RENUMBERED BOM
11	14219	TJM 02/19/08	REVISED NOTE 8, PROD CODE UPDATED DISPLAY
12	20193	BAR 8/12/05	ADDED PART WEIGHT, 19428-01 1/4-20 WAS 1/4-20 UNC-2B; REVISED BOM AND NOTES; 80853-00 QTY (1) WAS (2)
13	36200	AGS 03/17/11	UPDATE NOTE 1, FORMAT, PART #, DESCRIPTION, STAKE INFO, ICV. 10342-00 WAS 10340-00. ADDED: ISO VIEW, ITEM 2 BLLN.
14	38532	AGJ 04/24/14	ADDED: VIEW B, NOTES 10, 11. UPDATED: PR/CR DIMS, NOTE 2.



- NOTES: UNLESS OTHERWISE SPECIFIED;
- ASSEMBLY COMPLIES WITH STRENGTH REQUIREMENTS OF SAE STANDARD J839.
 - IDENTIFY ASSEMBLY WITH PART NUMBER AND DATE CODE APPROXIMATELY AS SHOWN, OR IN OTHER APPROVED LOCATIONS AS OUTLINED IN ES-121; ORIENTATION OF THE RIVET CONTAINING PART NUMBER AND DATE CODE NOT IMPORTANT.
 - AXLES TO WITHSTAND A MINIMUM OF 120 IN-LB [13.6 Nm] OF TORQUE.
 - TIGHTEN GRADE 5 OR BETTER MOUNTING FASTENERS TO THE FASTENER MANUFACTURER'S RECOMMENDED TORQUE VALUE; HOWEVER, DO NOT EXCEED 120 IN-LB [13.6 Nm].
 - ROTORS TO FULLY ENGAGE THE CATCH IN THE PRIMARY AND SECONDARY POSITIONS WHEN CLOSED WITH A Ø.678 [17.22] GAUGE PIN.
 - WHEN MOUNTING LATCH, MOUNTING HOLE SIZE NOT TO EXCEED Ø.312 [7.92].
 - USE WITH TRIMARK'S Ø.675 [17.15] LATCH BOLT.
 - ORIENTATION OF SLOT IN LINK (ITEM 15) NOT IMPORTANT.
 - DIMENSIONS IN [] ARE MILLIMETERS FOR REFERENCE ONLY.
 - ORIENTATION OF SPRING (ITEM 19) IS CRITICAL TO PROPER FUNCTION.
 - OPPOSITE HAND IS 11443-16.

DIMENSIONS	ANGLES
X.X = ±.1	° = ± 1°
X.XX = ±.06	
X.XXX = ±.060	

<p>INDICATES REQUIRED ASSEMBLY INFORMATION. UDS: THE "00" VERSION SHALL BE THE UNFINISHED VERSION OF PART SHOWN. UDS: ALL DIMENSIONS APPLY BEFORE COATING. (ASME Y14.5M, sec. 2.4.13)</p>		<p>TriMark 500 Bailey Avenue P. O. Box 350 New Hampton, Iowa 50659 U.S.A. Tel: 641-394-3188 Fax: 641-394-2392</p>	
TOLERANCES UNLESS OTHERWISE SPECIFIED (UDS)	DRAWN BY JPR 08/14/87	CHECKED BY BAB	PROJECT L86057-4
DO NOT SCALE DRAWING	PRODUCT CODE E10 (050-0150)	CUSTOMER PART NUMBER	DESCRIPTION 050-0150, L.H. LCH/LNK, 1/4-20, 0DEG
REF. T/M OP 4.20-2 FOR SUP. QUALITY REQ. REF. T/M OP 4.20-3 FOR INT. QUALITY REQ.	PART WEIGHT (1.21 LB)	SURFACE AREA	SIZE D SCALE 1.0 PART NUMBER 11442