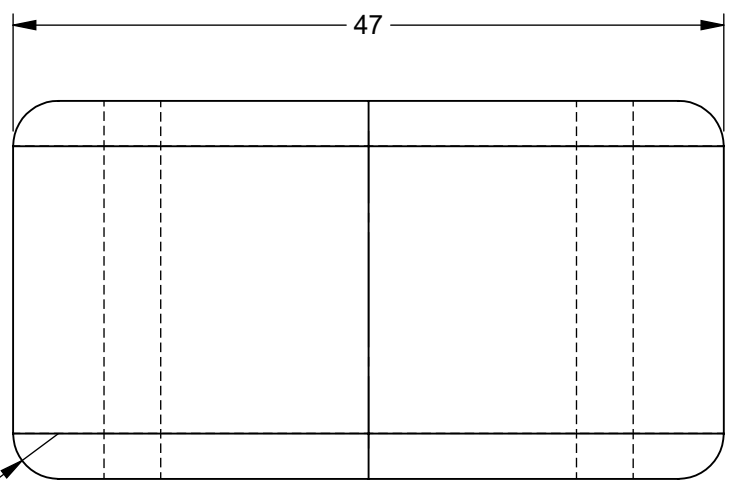
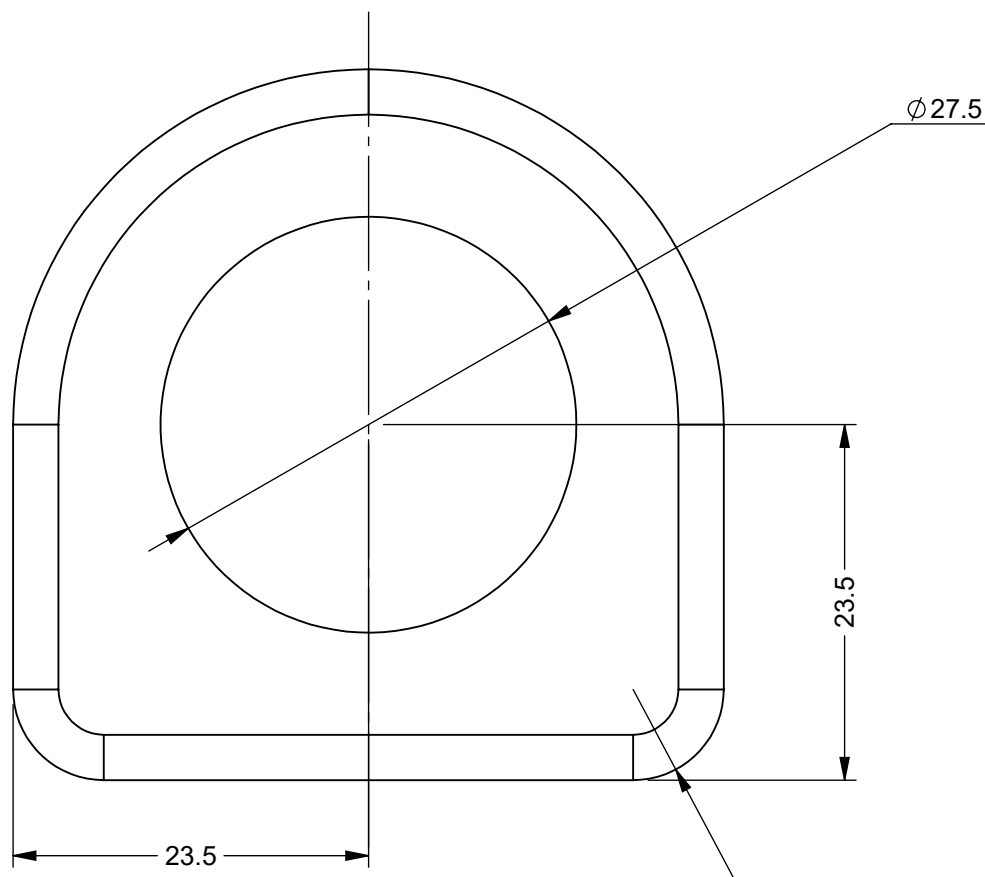
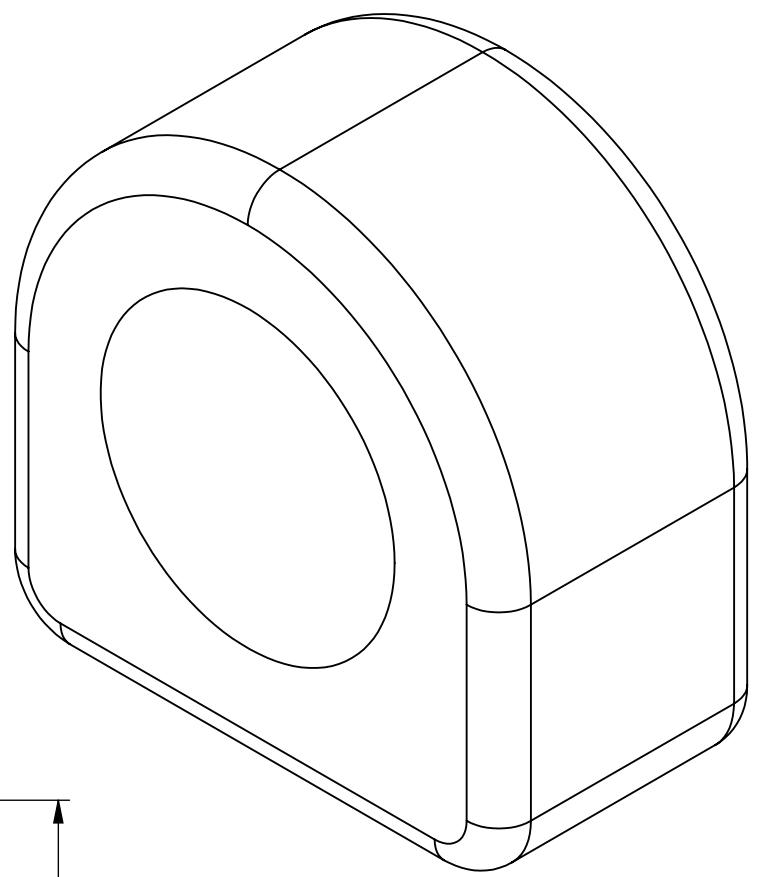


A  
B  
C  
D  
E  
F

A  
B  
C  
D  
E  
F

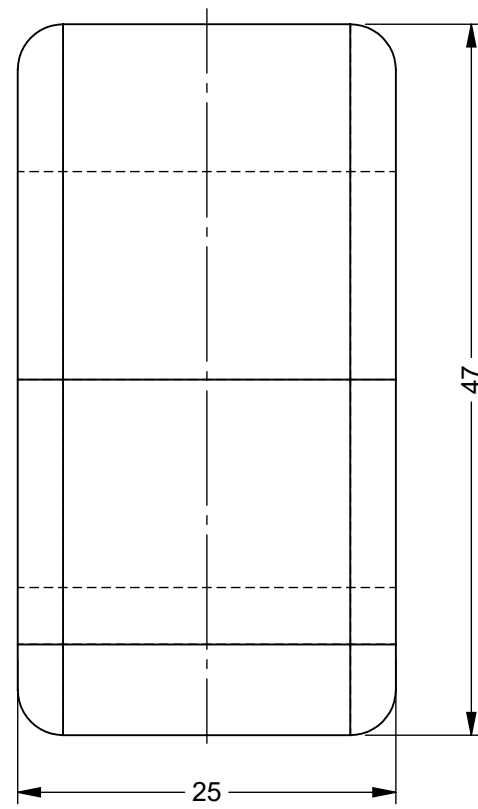


2 x R3



Ø27.5

2 x R6



ZONE	REV.	DESCRIPTION	DATE	APPROVED
	1	VALIDATION COMPLETE	08/06/2023	A.P

REVISIONS

MATERIAL: FORGED STEEL	DRAWN BY: UF			DESCRIPTION: FORGED STEEL TAILBOARD LOCKING BAR BRACKET - WELD ON	A3
MASS: 0.26	CHECKED BY: A.P				
FINISH: NATURAL	APPROVED BY: A.P	NUMBER: 4109-002	REVISION: 1		
ORIGINATION DATE: 08/06/2023		SCALE : PROPORTIONAL - DO NOT SCALE REF SCALE 2:1 WHEN PRINTED ON A3			PROJECTION 3rd ANGLE

TOLERANCES		SURFACE FINISH 1.6µm Ra	
0.5 - 6	= ±0.1mm	FILLET RADII	0.5 TO 1.0
6 - 30	= ±0.2 mm	SQUARENESS	0.05 IN 25
30 - 120	= ±0.3 mm	PARALLELISM	0.05 IN 25
120 - 400	= ±0.5 mm	RUNOUT	0.1
400 - 1000	= ±0.8 mm	ANGLES	±0.5°
1000 - 2000	= ±1.2 mm		
2000 - 4000	= ±2.0 mm		

PROPRIETARY RIGHTS ARE INCLUDED IN THE INFORMATION DISCLOSED HEREIN. NEITHER THIS DOCUMENT NOR ANY INFORMATION DISCLOSED SHALL BE REPRODUCED, USED, TRANSFERRED TO OTHER DOCUMENTS, OR DISCLOSED TO OTHERS FOR ANY PURPOSE INCLUDING MANUFACTURING UNLESS SPECIFICALLY AUTHORISED IN WRITING  
REMOVE ALL SHARP EDGES AND BURRS  
PART FINISHING AND MARKING TO CESF001

NOTE:  
TO SUIT Ø25 BAR