

NOTE:

ABS CONSTRUCTION
 304 STAINLESS STEEL SPINDLES & BEARINGS
 COMPLETE WITH INTERNAL GRILL AND SHUTTER
 INTEGRAL NEOPRENE SEALING GASKET
 SUIT ROOF THICKNESS 1-21mm

PART No.	FINISH
2527/006	BLACK - RAL 9005
2527/007	WHITE - RAL 9010



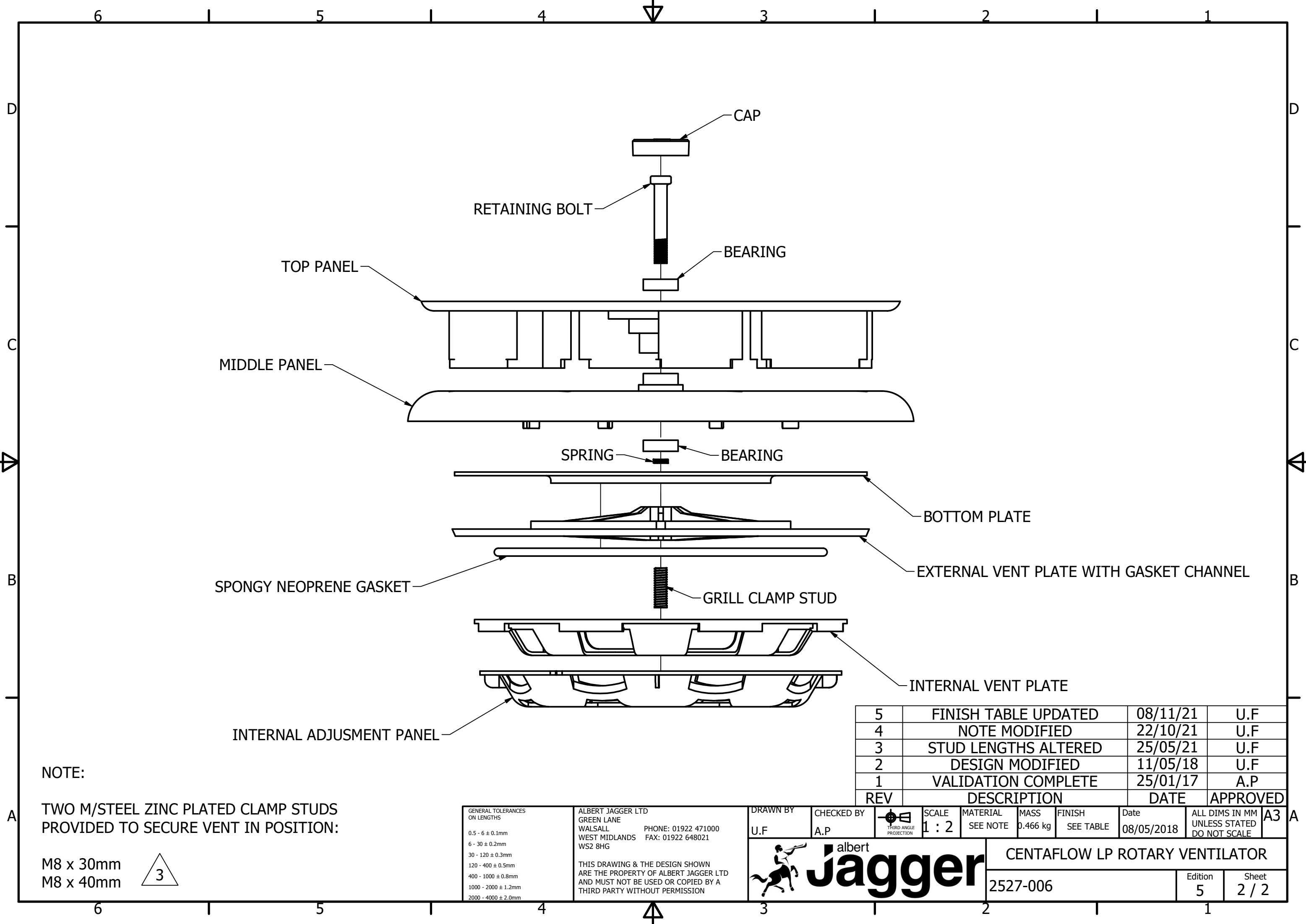
REV	DESCRIPTION	DATE	APPROVED
5	FINISH TABLE UPDATED	08/11/21	U.F
4	NOTE MODIFIED	22/10/21	U.F
3	STUD LENGTHS ALTERED	25/05/21	U.F
2	DESIGN MODIFIED	11/05/18	U.F
1	VALIDATION COMPLETE	25/01/17	A.P

GENERAL TOLERANCES ON LENGTHS
0.5 - 6 ± 0.1mm
6 - 30 ± 0.2mm
30 - 120 ± 0.3mm
120 - 400 ± 0.5mm
400 - 1000 ± 0.8mm
1000 - 2000 ± 1.2mm
2000 - 4000 ± 2.0mm

ALBERT JAGGER LTD
 GREEN LANE
 WALSALL PHONE: 01922 471000
 WEST MIDLANDS FAX: 01922 648021
 WS2 8HG

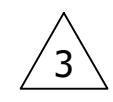
THIS DRAWING & THE DESIGN SHOWN ARE THE PROPERTY OF ALBERT JAGGER LTD AND MUST NOT BE USED OR COPIED BY A THIRD PARTY WITHOUT PERMISSION

DRAWN BY U.F	CHECKED BY A.P	SCALE 1 : 3	MATERIAL SEE NOTE	MASS 0.466 kg	FINISH SEE TABLE	Date 08/05/2018	ALL DIMS IN MM UNLESS STATED DO NOT SCALE	A3
						CENTAFLOW LP ROTARY VENTILATOR		
						2527-006	Edition 5	Sheet 1 / 2



NOTE:
TWO M/STEEL ZINC PLATED CLAMP STUDS
PROVIDED TO SECURE VENT IN POSITION:

M8 x 30mm
M8 x 40mm



REV	DESCRIPTION	DATE	APPROVED
5	FINISH TABLE UPDATED	08/11/21	U.F
4	NOTE MODIFIED	22/10/21	U.F
3	STUD LENGTHS ALTERED	25/05/21	U.F
2	DESIGN MODIFIED	11/05/18	U.F
1	VALIDATION COMPLETE	25/01/17	A.P

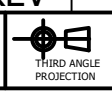
GENERAL TOLERANCES ON LENGTHS
0.5 - 6 ± 0.1mm
6 - 30 ± 0.2mm
30 - 120 ± 0.3mm
120 - 400 ± 0.5mm
400 - 1000 ± 0.8mm
1000 - 2000 ± 1.2mm
2000 - 4000 ± 2.0mm

ALBERT JAGGER LTD
GREEN LANE
WALSALL
WEST MIDLANDS
WS2 8HG
PHONE: 01922 471000
FAX: 01922 648021

THIS DRAWING & THE DESIGN SHOWN
ARE THE PROPERTY OF ALBERT JAGGER LTD
AND MUST NOT BE USED OR COPIED BY A
THIRD PARTY WITHOUT PERMISSION

DRAWN BY
U.F

CHECKED BY
A.P



SCALE
1 : 2

MATERIAL
SEE NOTE

MASS
0.466 kg

FINISH
SEE TABLE

Date
08/05/2018

ALL DIMS IN MM
UNLESS STATED
DO NOT SCALE

A3



albert Jagger
CENTAFLOW LP ROTARY VENTILATOR
2527-006

Edition 5	Sheet 2 / 2
--------------	----------------