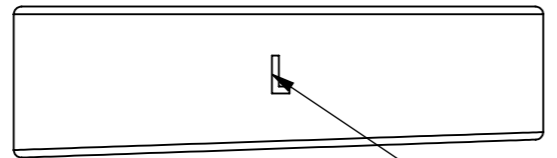
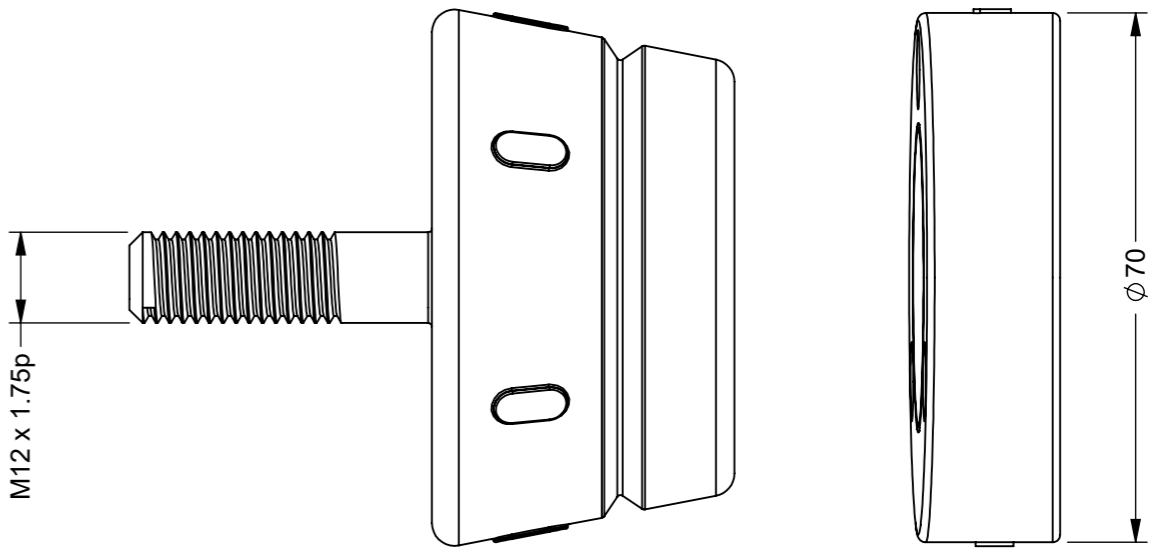
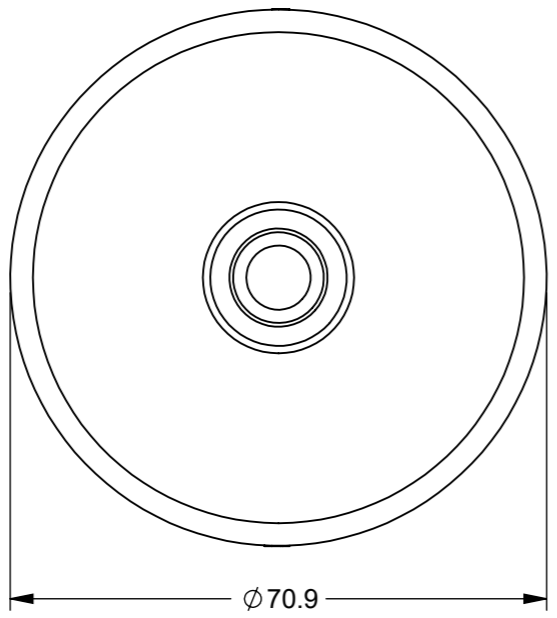
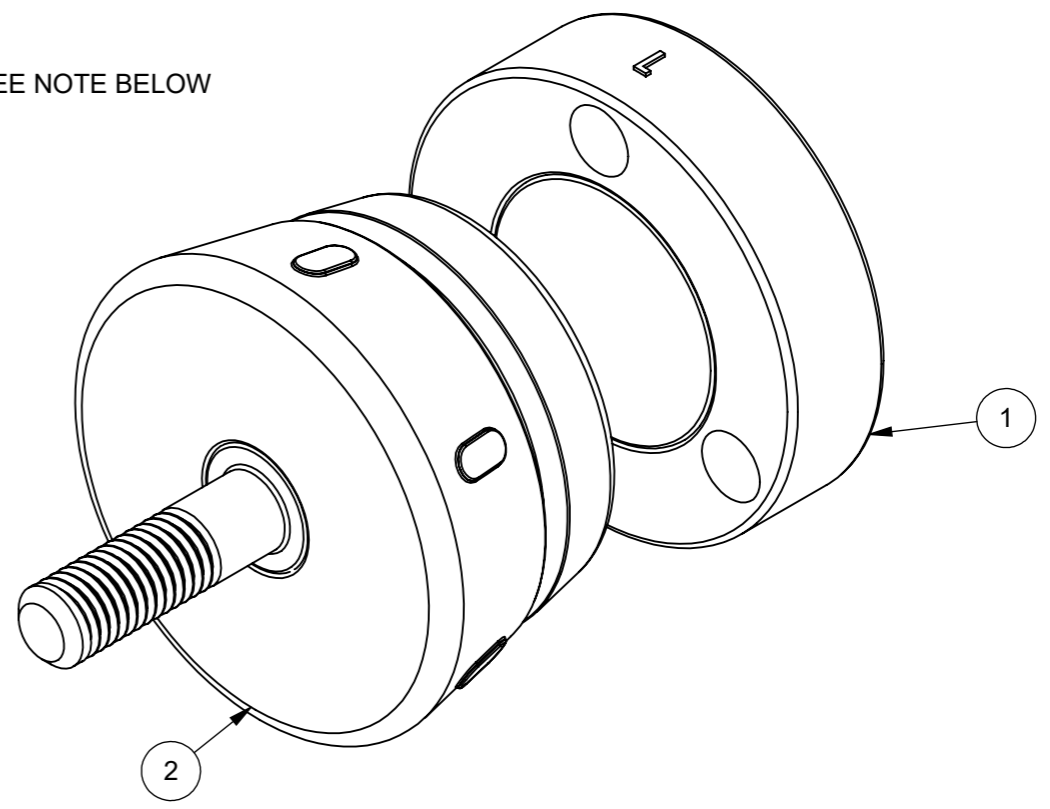
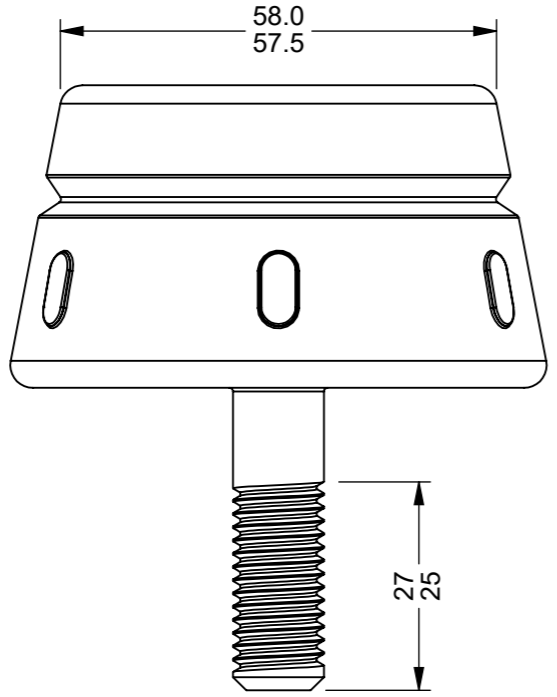


IF IN DOUBT ASK

ITEM NO.	PART NUMBER	DESCRIPTION	QTY.
1	0888-0933-1	BONDED FEMALE CATCH PLATE ASSY	1
2	0888-0933-2	MALE MAGNET DOOR RETAINER ASSY	1



NOTE LETTER 'L' AND 'R' ON OPPOSITE SIDES - SEE NOTE BELOW



NOTE:
 LETTER 'L' FACING UP FOR USE ON LH SIDE OF VEHICLE WHEN FACING THE REAR OF THE VEHICLE
 LETTER 'R' FACING UP FOR USE ON LH SIDE OF VEHICLE WHEN FACING THE REAR OF THE VEHICLE
 MAGNETIC PULL FORCE OF 20kg ACHIEVED ONLY WHEN MAGNETS ARE CONCENTRIC
 M6 CAP HEAD BOLTS TO BE USED TO MOUNT FEMALE COMPONENT
 FIXINGS NOT SUPPLIED

UNLESS OTHERWISE STATED, ALL DIMENSIONS IN mm

TOLERANCES	SURFACE FINISH
0.5 - 6 = ±0.1mm	1.6µm Ra
6 - 30 = ±0.2 mm	FILLET RADII 0.5 TO 1.0
30 - 120 = ±0.3 mm	SQUARENESS 0.05 IN 25
120 - 400 = ±0.5 mm	PARALLELISM 0.05 IN 25
400 - 1000 = ±0.8 mm	RUNOUT 0.1
1000 - 2000 = ±1.2 mm	ANGLES ±0.5°
2000 - 4000 = ±2.0 mm	

ZONE	REV.	DESCRIPTION	DATE	APPROVED	
REVISIONS					
		MATERIAL: SEE COMPONENT DRAWINGS	DRAWN BY: UF		
		MASS: 0.45	CHECKED BY: A.P		
		FINISH: SEE COMPONENT DRAWINGS	APPROVED BY: A.P		
		DESCRIPTION: H/DUTY MAGNETIC DOOR HOLDBACK - 20KG		A3	
		NUMBER: 0888-0933	REVISION: A		SHEET: 1 of 1
		ORIGINATION DATE: 08/12/2023	SCALE : PROPORTIONAL - DO NOT SCALE REF SCALE 1:2 WHEN PRINTED ON A3		
				PROJECTION 3rd ANGLE	

PROPRIETARY RIGHTS ARE INCLUDED IN THE INFORMATION DISCLOSED HEREIN. NEITHER THIS DOCUMENT NOR ANY INFORMATION DISCLOSED SHALL BE REPRODUCED, USED, TRANSFERRED TO OTHER DOCUMENTS, OR DISCLOSED TO OTHERS FOR ANY PURPOSE INCLUDING MANUFACTURING UNLESS SPECIFICALLY AUTHORISED IN WRITING
 REMOVE ALL SHARP EDGES AND BURRS
 PART FINISHING AND MARKING TO CESF001