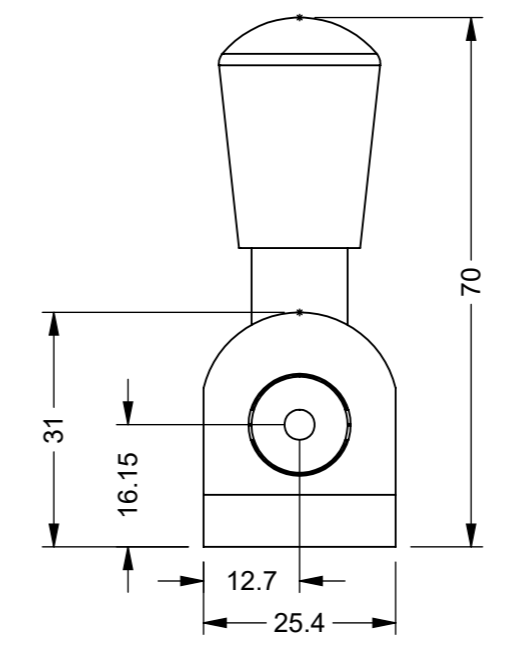
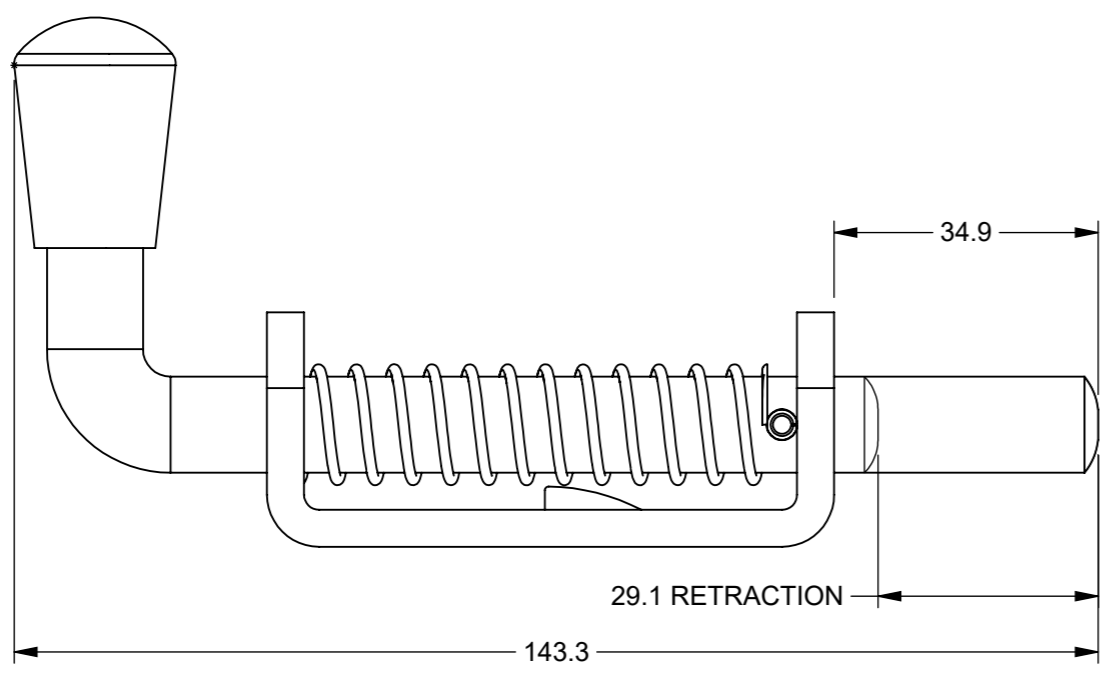
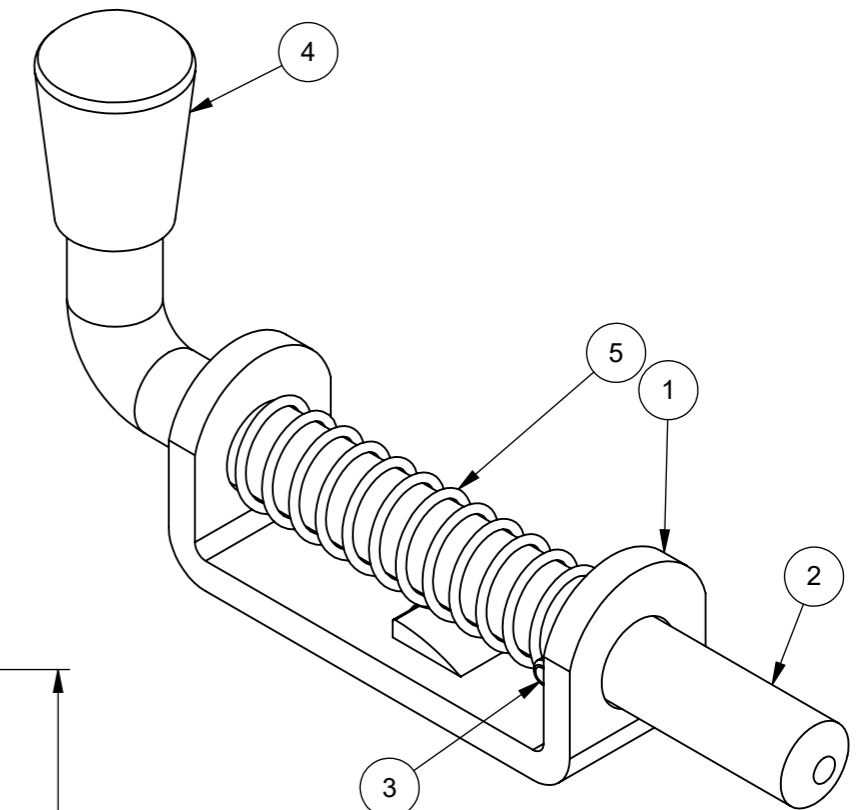
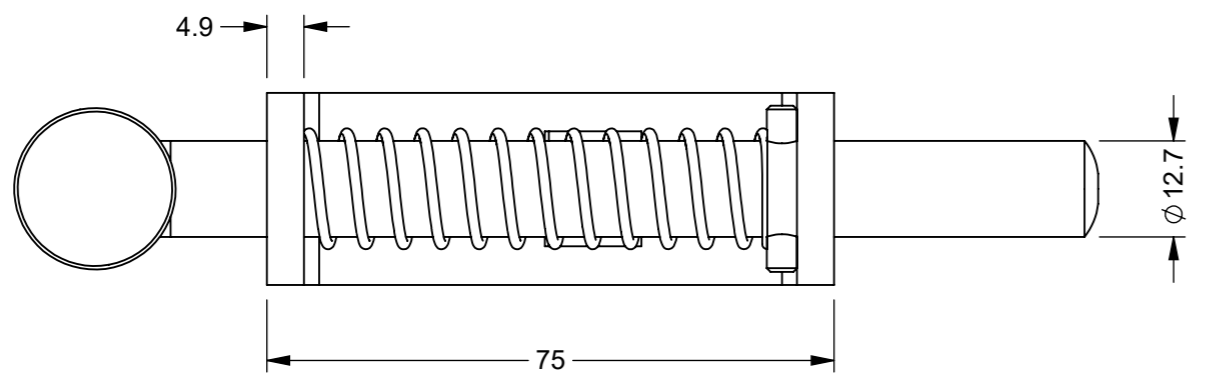


IF IN DOUBT ASK

ITEM NO.	PART NUMBER	DESCRIPTION	QTY.
1	0836-001-1	M/STEEL - SELF COLOUR SPRING BOLT BASE PLATE	1
2	0836-001-2	M/STEEL EN1A - 90 DEGREE BOLT - 139 O/A - Z/C PASSIVATED	1
3	0836-001-3	M/STEEL BOLT PIN - 22 O/A - Z/C PASSIVATED	1
4	0836-001-4	RED PLASTIC CAP	1
5	0836-001-5	M/STEEL SPRING - Z/C PASSIVATED	1



ZONE	REV.	DESCRIPTION	DATE	APPROVED
A4	3	MATERIAL CHANGED ON BOLT TO M/STEEL EN1A	19/12/2023	U.F

REVISIONS

UNLESS OTHERWISE STATED, ALL DIMENSIONS IN mm	
TOLERANCES	SURFACE FINISH 1.6µm Ra
0.5 - 6 = ±0.1mm	FILLET RADII 0.5 TO 1.0
6 - 30 = ±0.2 mm	SQUARENESS 0.05 IN 25
30 - 120 = ±0.3 mm	PARALLELISM 0.05 IN 25
120 - 400 = ±0.5 mm	RUNOUT 0.1
400 - 1000 = ±0.8 mm	ANGLES ±0.5°
1000 - 2000 = ±1.2 mm	
2000 - 4000 = ±2.0 mm	

MATERIAL: SEE TABLE	DRAWN BY: UF	DESCRIPTION: NARROW BASE SPRING BOLT ASSY		A3
MASS: 0.29	CHECKED BY: A.P	NUMBER: 0836-001	REVISION: 3	
FINISH: SEE TABLE	APPROVED BY: A.P	SHEET: 1 of 1		
ORIGINATION DATE: 19/12/2023		SCALE : PROPORTIONAL - DO NOT SCALE REF SCALE 1:1 WHEN PRINTED ON A3		PROJECTION 3rd ANGLE



PROPRIETARY RIGHTS ARE INCLUDED IN THE INFORMATION DISCLOSED HEREIN. NEITHER THIS DOCUMENT NOR ANY INFORMATION DISCLOSED SHALL BE REPRODUCED, USED, TRANSFERRED TO OTHER DOCUMENTS, OR DISCLOSED TO OTHERS FOR ANY PURPOSE INCLUDING MANUFACTURING UNLESS SPECIFICALLY AUTHORISED IN WRITING  
REMOVE ALL SHARP EDGES AND BURRS  
PART FINISHING AND MARKING TO CESF001