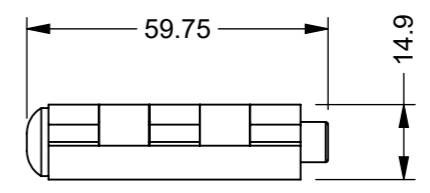
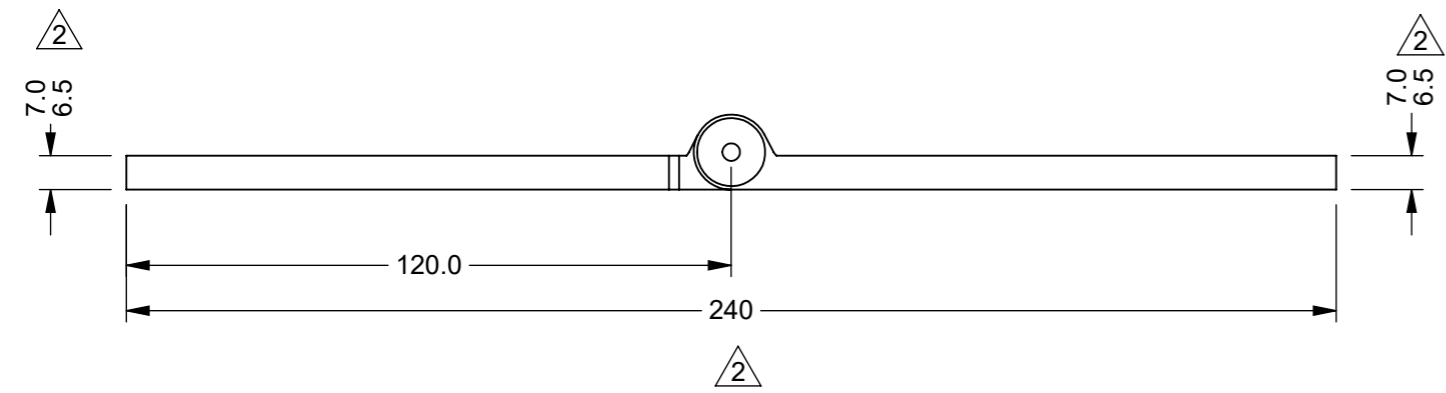
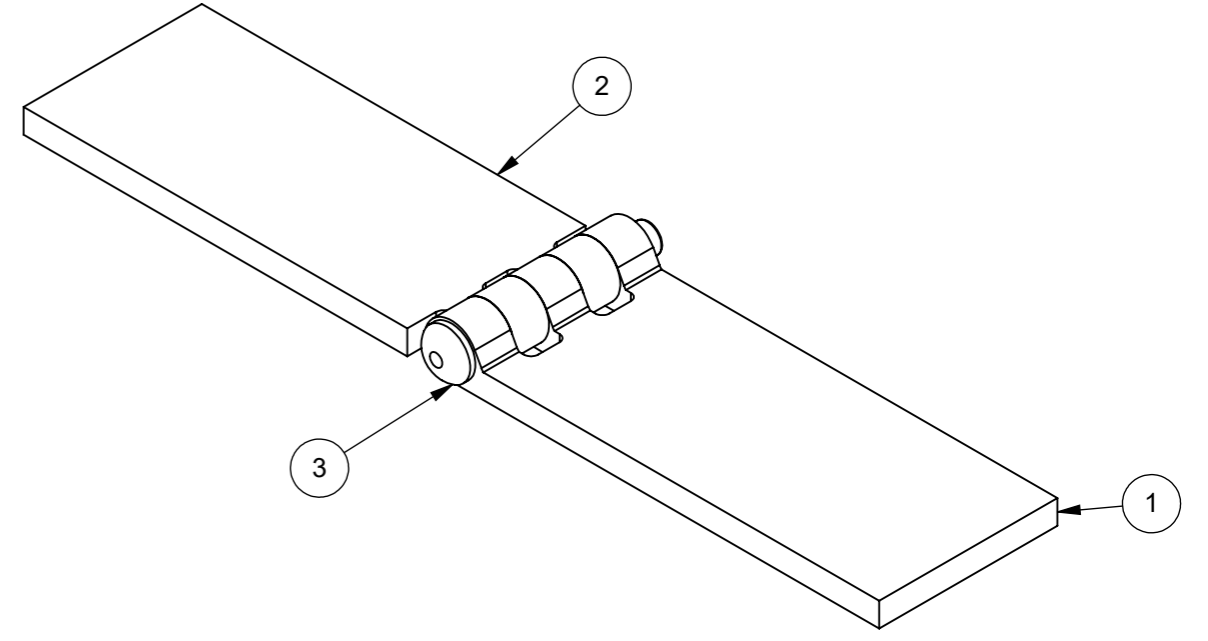
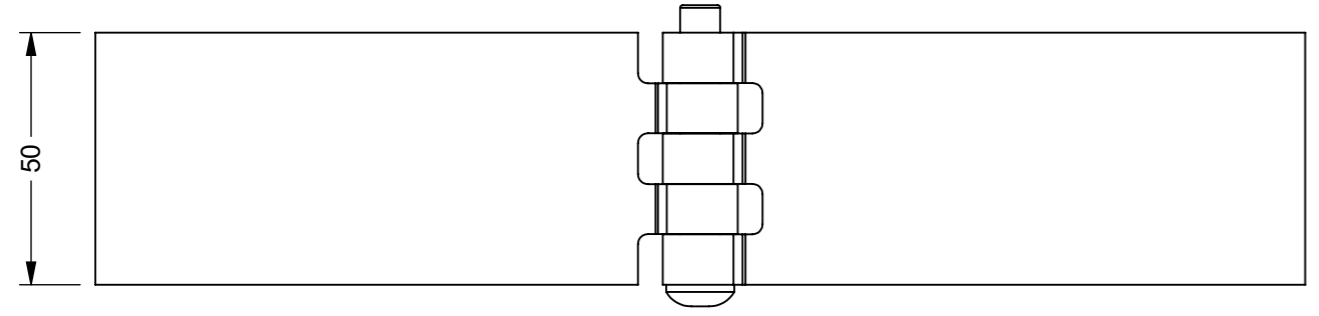


IF IN DOUBT ASK

ITEM NO.	PART NUMBER	DESCRIPTION	QTY.
1	0430-002-1	M/STEEL MAIN HINGE FLAP	1
2	0430-002-2	M/STEEL MOUNTING HINGE FLAP	1
3	0430-002-3	S/STEEL HINGE PIN - 59.75 O/A	1



ZONE	REV.	DESCRIPTION	DATE	APPROVED
D4, D8, E6	2	ECR 06 - DIMENSIONS MODIFIED TO SUIT NEW SAMPLE	25/05/2023	U.F
	1	VALIDATION COMPLETE	07/12/2016	A.P

REVISIONS

UNLESS OTHERWISE STATED, ALL DIMENSIONS IN mm	
TOLERANCES	
0.5 - 6 = ±0.1mm	SURFACE FINISH 1.6µm Ra
6 - 30 = ±0.2 mm	FILLET RADII 0.5 TO 1.0
30 - 120 = ±0.3 mm	SQUARENESS 0.05 IN 25
120 - 400 = ±0.5 mm	PARALLELISM 0.05 IN 25
400 - 1000 = ±0.8 mm	RUNOUT 0.1
1000 - 2000 = ±1.2 mm	ANGLES ±0.5°
2000 - 4000 = ±2.0 mm	

MATERIAL: SEE TABLE	DRAWN BY: UF	DESCRIPTION: COACH HINGE - SOLID DRAWN STEEL		A3
MASS: 0.66	CHECKED BY: A.P	NUMBER: 0430-002	REVISION: 2	
FINISH: NATURAL	APPROVED BY: A.P	ORIGINATION DATE: 25/05/2023	SCALE : PROPORTIONAL - DO NOT SCALE REF SCALE 1:2 WHEN PRINTED ON A3	
		PROJECTION 3rd ANGLE		

NOTE:
TO SUIT 260° APPLICATIONS

PROPRIETARY RIGHTS ARE INCLUDED IN THE INFORMATION DISCLOSED HEREIN. NEITHER THIS DOCUMENT NOR ANY INFORMATION DISCLOSED SHALL BE REPRODUCED, USED, TRANSFERRED TO OTHER DOCUMENTS, OR DISCLOSED TO OTHERS FOR ANY PURPOSE INCLUDING MANUFACTURING UNLESS SPECIFICALLY AUTHORISED IN WRITING
REMOVE ALL SHARP EDGES AND BURRS
PART FINISHING AND MARKING TO CESF001

