

Trailer Conversions

EXHIBITION & CATERING TRAILERS PRODUCT CATALOGUE



With 135 year's experience supplying vehicle hardware, Albert Jagger's relationship with the horsebox sector spans over the years. We work with leading designers and engineers to provide our customers with an unbeatable range of products that enhance the safety, usability, and efficiency of their horsebox.

From building a new vehicle to sourcing replacement parts, you'll find everything you need with our wide range of quality horsebox fittings and components. All our products are designed to ensure quality and reliability, with the well-being, safety and comfort of both horse and driver at the forefront.

Image Source: TCM Trailers Ltd

Supply Without Compromise

Transport Hardware

ANTILUCE FASTENERS

M8 x 18mm, Bolt On
3285/001



Finish Zinc Plated Steel
Boss 12mm
Panel Thickness 6mm
Shank Diameter 8mm
Shank Length 21mm
Thread M8
Thread Length 18mm
Feature Nut & 2 Washers

M8 x 22mm, Bolt On
3330/095



Finish 304 Stainless Steel
Boss 12mm
Panel Thickness 5mm
Shank Diameter 8mm
Shank Length 25mm
Thread M8
Thread Length 22mm
Feature Nut & 2 Washers

M12 x 65mm, Bolt On
3325/001



Finish Zinc Plated Steel
Boss 19mm
Panel Thickness 6mm
Shank Diameter 12mm
Shank Length 76mm
Thread M12
Thread Length 65mm

M12 x 22mm, Bolt On
3330/061



Finish 304 Stainless Steel
Boss 19mm
Panel Thickness 6mm
Shank Diameter 12mm
Shank Length 25mm
Thread M12
Thread Length 22mm

M12 x 28mm, Bolt On
3275/001



Finish Zinc Plated Steel
Boss 19mm
Panel Thickness 6mm
Shank Diameter 12mm
Shank Length 33mm
Thread M12
Thread Length 28mm

13 x 13mm, Weld On
3330/047



Finish 304 Stainless Steel
Boss 19mm
Panel Thickness 7mm
Shank Diameter 13mm
Shank Length 13mm

12 x 12mm, Weld On
3232/001



Finish Zinc Plated
Boss 19mm
Panel Thickness 6mm
Shank Diameter 12mm
Shank Length 12mm

M12 x 22mm, Bolt On
3263/001



Finish Zinc Plated Steel
Boss 19mm
Panel Thickness 6mm
Shank Diameter 12mm
Shank Length 25mm
Thread M12
Thread Length 22mm

Antiluce on plate
3330/874



Finish Stainless Steel
Boss 18mm
Panel Thickness 6mm
Plate Size 89.5 x 40 x 5mm

BUDGET LOCKS

Universal - 85mm
0748/001



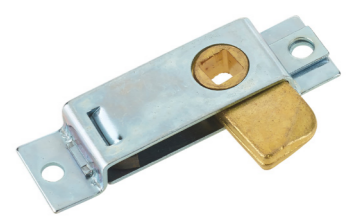
Material Mild Steel
Finish Z/P Clear Passivated
Type Universal
Length 22mm
Width 85mm
Thickness 8mm
Tounge Zinc Plated
Fixing 6.5mm

Universal - 125.5mm
0750/002



Material Mild Steel
Finish Z/P Clear Passivated
Type Universal
Length 27mm
Width 125.5mm
Thickness 13mm
Tounge Malleable Iron
Fixing 5mm

Left Hand - 80.5mm
0746/003



Material Mild Steel
Finish Z/P Clear Passivated
Type Left Hand
Length 22.5mm
Width 80.5mm
Thickness 11.5mm
Tounge Brass
Fixing 5.5mm

Universal - 83mm
5589/017



Material Acetal Copolymer
Finish Black
Length 22mm
Width 83mm
Thickness 14mm
Fixing 7mm

Escutcheon, Hinged Lid
0130/003



Material Polyamide
Finish Black
Length 41.5mm
Width 51mm
Thickness 8.5mm
Access Hole 16mm
Fixing 3.5mm

Escutcheon, Hinged Lid
0130/001



Material Zinc Die-Cast
Finish Polished Chrome
Length 27mm
Width 27mm
Thickness 7mm
Access Hole 12mm
Fixing 3mm

125mm Tee Key
2257/004



Material Mild Steel
Finish Zinc Plated
Length 125mm
Width 70mm
Square 45 x 6-9mm

83mm Tee Key
2257/001



Material Mild Steel
Finish Zinc Plated
Length 83mm
Width 61mm
Square 45 x 6-9mm

Striker Plate
0779/001



Material Mild Steel
Finish Z/P Clear Passivated
Length 18mm
Width 77mm
Thickness 1.5mm
Square 6.5mm
Fixing 5.5mm

CAMERA SYSTEMS

Camera System 7" Monitor
9933/070



Voltage	12V
IP Rating	IP69K
Viewing Angle	180
IR Lights	18 LED's
Mounting	U Bracket
Connection	4 Pin
Cable Length	20m
Dimensions	90 x 80 x 50mm

Heavy Duty Rear Camera - PAL
9933/080



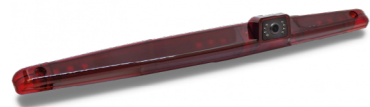
Voltage	12V DC
IP Rating	IP69K
Viewing Angle	130
IR Lights	18 LED's
Mounting	U Bracket
Connection	4 Pin
Cable Length	20m
Dimensions	90 x 80 x 50mm

Camera Extension Lead
9911/2222



Connection	4 Pin
Length	20m

Universal Brake Light Camera
9933/095



Voltage	12V DC
IP Rating	IP68
Viewing Angle	170
IR Lights	8 LED's
Connection	4 Pin
Cable Length	15m
Dimensions	456 x 35 x 42mm
Features	Parking Lines, Switchable

Camera & Clip On Mirror Monitor
9933/060



Voltage	12V
IP Rating	IP69K
Viewing Angle	120
IR Lights	18 LED's
Mounting	U Bracket
Connection	4 Pin
Cable Length	20m
Dimensions	250 x 118 x 30mm

Temperature & Humidity Sensor
9933/090



Temperature Range	-40 - 65°C
Humidity Range	0-100%RH
Connection	Bluetooth 5.0
App Control	Yes
Battery Life	365 Days
Dimensions	40x40x30mm

Dash Cam- 720P
9933/720



Display	2.5" TFT LCD
Camera	3.0MP, A+ Grade 6G Lens
Viewing Angle	120° Wide Angle
Resolution	Real HD 720P

Dash Cam- 1080P
9933/1080



Display	3.0" TFT LCD
Camera	12.0MP, A+ Grade Super Vision 6G Lens
Viewing Angle	170° Ultra-Wide Angle
Resolution	Real FHD 1080P

Brake Light Camera
9911/PSC14



Image Sensor	1/3" Colour Super CMOS
Resolution	700TV Lines
IR LEDs	8
IR Distance	10m
Waterproof	IP68
Suitable for	Mercedes Sprinter 07 - Present Day VW Crafter 06-17

COMPRESSION LATCHES

1-14mm Grip, Black, Locking
3805/BL14



Material	Zinc Die Cast
Finish	Black
Type	Locking
Keys	Keyed Alike
Length	109mm
Width	50mm
Grip	1-14mm

29-45mm Grip, Black, Keyed-Alike
3805/BL45



Material	Zinc Die Cast
Finish	Black
Type	Locking
Keys	Keyed Alike
Length	109mm
Width	50mm
Grip	29-45mm

29-45mm Grip, Black, Mixed Keys
3805/BL45M



Material	Zinc Die Cast
Finish	Black
Type	Locking
Keys	Mixed Keys
Length	109mm
Width	50mm
Grip	29-45mm

1-25mm Grip, Black, Non-Locking
3802/BN25FT



Material	Zinc Die Cast
Finish	Black
Type	Non-Locking
Length	93mm
Width	34mm
Grip	1-25mm

1-24mm Grip, Black, Keyed-Alike
3802/BL24



Material	Zinc Die Cast
Finish	Black
Type	Locking
Keys	Keyed-Alike
Length	109mm
Width	33.5mm
Grip	1-24mm

1-24mm Grip, Chrome, Keyed-Alike
3802/CL24



Material	Zinc Die Cast
Finish	Chrome
Type	Locking
Keys	Keyed-Alike
Length	109mm
Width	33.5mm
Grip	1-24mm

1-24mm Grip, Chrome, Non-Locking
3802/CN24



Material	Zinc Die Cast
Finish	Chrome
Type	Non-Locking
Length	109mm
Width	33.5mm
Grip	1-24mm

Recessed Vector T
9850/275021-06-S1



Material	Glass Filled Nylon
Finish	Black
Type	Locking
Keys	Keyed-Alike
Length	131mm
Width	120mm
Thickness	65mm
Fixing	5.5mm

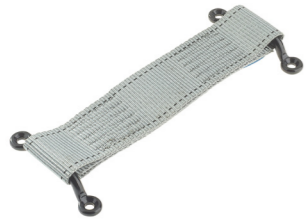
Universal Compression Latch
9530/0631



Material	Zinc Alloy
Finish	Black Powder Coated
Type	Locking
Length	85mm
Width	40mm
Grip	16-26mm

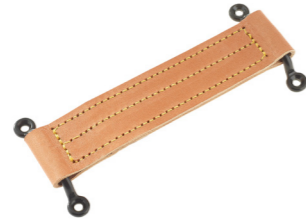
DOOR CHECK STRAPS & OVERCENTRE LOCKS

**Nylon Webbing Check Strap
4232/001**



Material Nylon Webbing
Colour Grey
Length 208mm
Width 44mm
Depth 4mm

**Leather Check Strap
4279/001**



Material Leather
Colour Brown
Length 203mm
Width 44mm
Depth 6mm

**Fastener Bolt
9827/60432**



Material Mild Steel
Colour Galvanised
Length 218mm
Width 91mm
Fixing 4 x 9mm

**702 Series Locking, 107-122mm
9100/52070**



Material Mild Steel
Finish Z/P, Clear Passivated
Type Locking
Length 50mm
Width 32mm
Overall Length 107-122mm
Adjustment 15mm
Capacity 300kg / 660lbs
Fixing 5.5mm

**701 Series Locking, 82-88mm
9100/52012**



Material Mild Steel
Finish Z/P, Clear Passivated
Type Locking
Length 37mm
Width 16mm
Overall Length 82-88mm
Adjustment 6mm
Capacity 100kg / 220lbs
Fixing 4.5mm

**703 Series Locking, 149-164mm
9100/52091**



Material Mild Steel
Finish Z/P, Clear Passivated
Type Locking
Length 60mm
Width 40mm
Overall Length 149-164mm
Adjustment 15mm
Capacity 500kg / 1101lbs
Fixing 5.5mm

**41C Series Vertical Catch Plate
9100/522831**



Material Mild Steel
Finish Z/P, Clear Passivated
Type Vertical
Length 32.5mm
Width 45mm
Fixing 5.5mm

**30C Series Vertical Catch Plate
9100/522631**



Material Mild Steel
Finish Z/P, Clear Passivated
Type Vertical
Length 20mm
Width 24mm
Fixing 4mm

**31C Series Vertical Catch Plate
9100/522731**



Material Mild Steel
Finish Z/P, Clear Passivated
Type Vertical
Length 23mm
Width 30.5mm
Fixing 5.5mm

DOOR HANDLES

**Pop Up T Handle - Left Hand
9500/12466-06**



Material Mild Steel
Finish Black Powder Coated
Type Locking, Keyed Alike
Length 108mm
Width 34mm
Thickness 14mm
Square 45 x 8mm

**Recessed Tee Handle
6212/0021**



Material Mild Steel
Finish Black Powder Coated
Type Locking, Keyed Alike
Length 127mm
Width 126.5mm
Thickness 22mm
Fixing 5.5mm Countersunk

**Recessed Lever Handle
4212/707**



Material Mild Steel
Finish Black Powder Coated
Type Locking, Keyed-Alike
Length 165mm
Width 165mm
Thickness 20mm
Fixing 5mm Countersunk

**Chrome T Handle
5224/002**



Material Mild Steel
Finish Chrome Plated
Type Locking, Keyed Alike
Length 101mm
Width 24mm
Thickness 45mm
Square 100 x 8mm

**Locking Chrome Lever Handle
4222/505**



Material Zinc Die-Cast
Finish Chrome Plated
Type Locking, Mixed Keys
Length 129.5mm
Thickness 42.5mm
Square 111 x 8mm
Rotation 360°
Hole Centres 44.5mm
Fixing 5.5mm Countersunk

**Interior/Exterior Handle
4222/1861711***



Material Zinc Die-Cast
Finish Black
Keys Mixed
Hole Centres 42mm
Panel Up to 70mm
Fixing 8mm bar secured with roll pin

**Release Handle
3204/002**



Material Zinc Alloy
Finish Chrome Plated
Length 119mm
Width 35mm
Thickness 36mm
Square 9.5mm

**Black T Handle
5224/006**



Material Mild Steel
Finish Black Powder Coated
Type Locking, Mixed Keys
Length 101mm
Width 24mm
Thickness 45mm
Square 110 x 8mm

**Titan Heavy Duty Handle
5589/01279***



Type Non-Locking
Colour Black
Length 160mm
Width 37mm
Fixing 44mm

DOOR HANDLES - EXTERIOR

0907 Series - Paddle Lock
0907/514



Material Mild Steel
Finish Black Powder Coated
Type Locking, Keys in Pairs
Length 140mm
Width 89mm
Thickness 36mm

0912 Series - Paddle Lock
0912/410



Material 304 Stainless Steel
Finish Self Colour
Type Locking, Keys in Pairs
Length 139.5mm
Width 108mm
Thickness 38mm

5589 Series - Drop T Latch
5589/1503



Material Stainless Steel
Finish Polished
Type Locking, Keyed Alike
Length 121mm
Width 124mm
Thickness 21mm
Fixing 5mm

Striker Plate
9500/11705-15



Material Mild Steel
Finish Zinc Plated
Length 97mm
Width 30mm
Thickness 1.5mm

Travel Trailer Latch
9500/29790-08



Material Zinc Die-Cast
Finish White Powder Coated
Type Locking, Keyed Alike
Length 109.5mm
Width 87.5mm
Thickness 40mm

Interior Release Plate
9500/15605-02



Material Zinc Die-Cast
Finish White Powder Coated
Width 120.5mm
Depth 109.5mm
Fixing 3mm

Universal Door Gear - Ø16mm
6000/33716111



Material 304 Stainless Steel
Finish Polished
Type Bolt On

Compartment Lock - Left Hand
5327/9301LH



Material Plastic
Finish Black
Type Left Hand
Inside Lock Length (Without Handle/Striker) 120mm x 56.5mm
Keys Sold Separately

Compartment Lock - Right Hand
5327/9301RH



Material Plastic
Finish Black
Type Right Hand
Inside Lock Length (Without Handle/Striker) 120mm x 56.5mm
Keys Sold Separately

DOOR RETAINERS

0556 Series - Assembly, White
0556/001



Material Nylon Moulding
Colour White
Type Assembly
Length 65mm
Width 29mm
Fixing 5mm

0555 Series - Claw Retainer
0555/003 (Male) 0555/004 (Female)



Material Nylon Moulding
Colour Black
Type Male / Female
Length 58mm / 67mm
Width 25mm / 24.5mm
Fixing 6mm / 6mm

2132 Series - Assembly, SS
2132/1000



Material 304 Stainless Steel
Type Assembly
Length 65mm
Width 29mm
Fixing 4.5mm Countersunk

Door Check Strap
4232/038



Material Stainless Steel
Finish Self Colour
Strap Rubber
Length 124mm
Width 40mm
Depth 2.5mm
Fixing 5mm

0666 Series - Female, Rubber
0666/001



Material Synthetic Rubber
Finish Black
Type Female
Width 40mm
Depth 36mm
Fixing 7mm
Shore A 70-85°
Pull Force 20-25kg

0666 Series - Male, Rubber
0666/002



Material Polypropylene
Finish Black
Type Male
Width 25mm
Depth 27mm
Fixing 6.5mm

T Bar Door Retainer
9810/3350



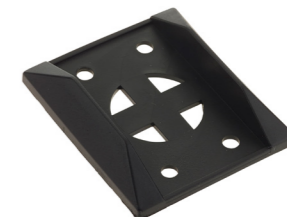
Material 304 Stainless Steel
Finish Self Colour
Length 123mm
Width 40mm
Fixing 5mm

T Bar Catch Plate
9810/3370



Material 304 Stainless Steel
Finish Self Colour
Length 66mm
Width 40mm
Fixing 5mm

T Bar Back Plate
9810/3390



Material Moulded Plastic
Colour Black
Length 70.5mm
Width 60mm
Fixing 5.5mm

FASTENERS

**Small Gravelly Fastener
0660/0001**



Material Mild Steel
Finish Chrome Plated
Length 33mm
Width 23mm
Arm Length 43mm
Striker Plate 46.5 x 23mm
Fixing 4mm

**Large Gravelly Fastener
0660/0002**



Material Mild Steel
Finish Chrome Plated
Length 40mm
Width 25mm
Arm Length 57mm
Striker Plate 64 x 27mm
Fixing 4mm

**Ø7/15mm Stroke Shoot Bolt
0486/16-1-3647**



Material Mild Steel
Finish ZP, Clear Passivated
Type Bolt On
Fixing 2 x 5mm
Length 43.5mm
Width 11mm
Stroke 15mm
Pin Diameter 7mm
End Plate Dimensions 35 x 11 x 2mm

**Chrome Plated - Medium
0662/001**



Material Zinc Die-Cast
Finish Chrome Plated
Length 48mm
Width 24mm
Arm Length 46mm
Striker Plate 48 x 24mm
Fixing Ø4mm Countersunk

**16mm Cam - Locking
2244/101**



Material Mild Steel
Finish Chrome Plated
Type Mixed Keys
Diameter Ø26.5mm
Grip 16mm
Fixing 180°

**20mm Cam - Locking
2245/101**



Material Mild Steel
Finish Chrome Plated
Type Keyed in Pairs
Diameter Ø25mm
Grip 20mm
Fixing 180°

**Wing Knob Handle
5000/0420***



Material Zinc Plated
Finish Black Powder Coating
Keys Mixed Keys
Rating IP67
Length 32mm

**Square Key - 8mm
5000/055**



Material Mild Steel
Finish Zinc Plated
Length 55mm

**18mm Square Quarter Turn
5000/818**



Material Zinc Die-Cast
Finish Chrome Plated
Length 18mm
Inset 8mm Sqr

GAS SPRINGS - 8MM

**19mm Cylinder, 100mm Stroke
1280/1090**



Piston Diameter 8mm
Cylinder Diameter 19mm
Stroke 100mm
Extended Length 250mm
Thread M8
Force 50 - 700N

**19mm Cylinder, 150mm Stroke
1280/1250**



Piston Diameter 8mm
Cylinder Diameter 19mm
Stroke 150mm
Extended Length 360mm
Thread M8
Force 50 - 700N

**19mm Cylinder, 200mm Stroke
1280/1400**



Piston Diameter 8mm
Cylinder Diameter 18mm
Stroke 200mm
Extended Length 460mm
Thread M8
Force 50 - 700N

**19mm Cylinder, 250mm Stroke
1280/1550**



Piston Diameter 8mm
Cylinder Diameter 19mm
Stroke 250mm
Extended Length 560mm
Thread M8
Force 50 - 700N

**Angled Attachment Bracket
1258/03**



Material Zinc Plated
Length 45mm
Width 25mm
Ball Ø10mm

**Pressure Release Key
1286/001**



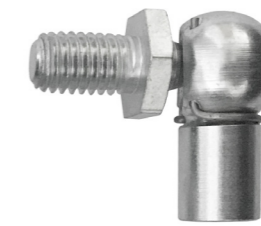
To Fit M8 Female Thread

**Eye Fitting - 20 x 8mm, M8
1251/02**



Length 20mm
Hole Diameter 8mm
Female Thread M8
Bracket 1258/01,
1258/02,
1258/904
Bracket Cap 1258/021

**Elbow Joint - M8 x 13 x 19mm
1252/52**



Length 19mm
Male Thread M8 x 13mm
Female Thread M8
Bracket 1258/03,
1258/04

**Attachment Bracket
1258/904**



Material 304 Stainless Steel
Length 69mm
Width 18mm
Complete With Clevis pin & retaining clip

GAS SPRINGS - 10MM

22mm Cylinder, 150mm Stroke
1282/2001



Piston Diameter 10mm
Cylinder Diameter 22mm
Stroke 150mm
Extended Length 360mm
Thread M8
Force 50 - 1300N

22mm Cylinder, 200mm Stroke
1282/2002



Piston Diameter 10mm
Cylinder Diameter 22mm
Stroke 200mm
Extended Length 460mm
Thread M8
Force 50 - 1300N

22mm Cylinder, 250mm Stroke
1282/2132



Piston Diameter 10mm
Cylinder Diameter 22mm
Stroke 250mm
Extended Length 540mm
Thread M8
Force 50 - 1300N

22mm Cylinder, 300mm Stroke
1282/2302



Piston Diameter 10mm
Cylinder Diameter 22mm
Stroke 300mm
Extended Length 660mm
Thread M8
Force 50 - 1300N

22mm Cylinder, 400mm Stroke
1282/2602



Piston Diameter 10mm
Cylinder Diameter 22mm
Stroke 400mm
Extended Length 860mm
Thread M8
Force 50 - 1300N

Angled Attachment Bracket
1258/03



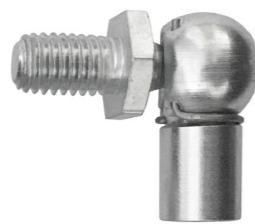
Material Zinc Plated
Length 45mm
Width 25mm
Ball Ø10mm

Eye Fitting - 20 x 8mm, M8
1251/02



Length 20mm
Hole Diameter 8mm
Female Thread M8
Bracket 1258/01,
1258/02,
1258/904
Bracket Cap 1258/021

Elbow Joint - M8 x 13 x 19mm
1252/52



Length 19mm
Male Thread M8 x 13mm
Female Thread M8
Bracket 1258/03,
1258/04

Attachment Bracket
1258/904



Material 304 Stainless Steel
Length 69mm
Width 18mm
Complete With Clevis pin &
retaining clip

GAS SPRINGS - 14MM & TRACTION

28mm Cylinder, 200mm Stroke
1244/0807



Piston Diameter 10mm
Cylinder Diameter 28mm
Stroke 200mm
Extended Length 495mm
Thread M8
Force 50 - 1300N

28mm Cylinder, 305mm Stroke
1244/0808



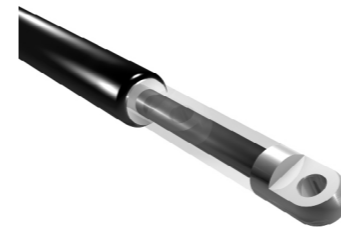
Piston Diameter 10mm
Cylinder Diameter 28mm
Stroke 305mm
Extended Length 705mm
Thread M10
Force 50 - 1500N

28mm Cylinder, 250mm Stroke
1285/3455



Piston Diameter 14mm
Cylinder Diameter 28mm
Stroke 250mm
Extended Length 560mm
Thread M10
Force 50 - 2600N

28mm Cylinder, 300mm Stroke
1285/3478



Piston Diameter 14mm
Cylinder Diameter 28mm
Stroke 300mm
Extended Length 680mm
Thread M10
Force 50 - 2600N

28mm Cylinder, 400mm Stroke
1285/3490



Piston Diameter 14mm
Cylinder Diameter 28mm
Stroke 400mm
Extended Length 860mm
Thread M10
Force 50 - 2600N

28mm Cylinder, 500mm Stroke
1285/4210



Piston Diameter 14mm
Cylinder Diameter 28mm
Stroke 500mm
Extended Length 1065mm
Thread M10
Force 50 - 2600N

Eye Fitting - 25 x 8mm, M10
1251/34



Length 25mm
Hole Diameter 8mm
Female Thread M10
Bracket 1258/01,
1258/02,
1258/904
Bracket Cap 1258/021

Elbow Joint - M10 x 20 x 35mm
1252/56



Length 35mm
Male Thread M10 x 20mm
Female Thread M10

Pressure Release Key - M10
1286/002



To Fit M10

HINGES - CENTAFLEX & LID SUPPORT STAYS

**Centaflex™ 2000 x 24mm
2231/020**



Material Co-extruded PVC
Finish Black
Length 2000mm
Width 28mm
Thickness 24mm

**Centaflex™ 2500 x 24mm
2231/025**



Material Co-extruded PVC
Finish Black
Length 2500mm
Width 28mm
Thickness 24mm

**Centaflex™ 3000 x 24mm
2231/030**



Material Co-extruded PVC
Finish Black
Length 3000mm
Width 28mm
Thickness 24mm

**Centaflex™ 2000 x 34mm
2231/120**



Material Co-extruded PVC
Finish Black
Length 2000mm
Width 30mm
Thickness 34mm

**Centaflex™ 2500 x 34mm
2231/125**



Material Co-extruded PVC
Finish Black
Length 2500mm
Width 30mm
Thickness 34mm

**Centaflex™ 3000 x 34mm
2231/130**



Material Co-extruded PVC
Finish Black
Length 3000mm
Width 30mm
Thickness 34mm

**Automatic Release Support Stay
0486/24-7-3542**



Material Mild Steel
Finish Zinc Plated
Closed Dimension 159mm
Extended Dimension 239mm

**Telescopic Support Stay 320mm
2522/008**



Material Pressed Steel
Finish Zinc Plated
Width Closed 320mm
Width Open 540mm

**Telescopic Support Stay 350mm
2522/500**



Material Pressed Steel
Finish Zinc Plated
Width Closed 350mm
Width Open 530mm

HINGES - CONCEALED

**Locker Hinge - Left Hand
0859/002**



Material Mild Steel
Finish Zinc Plated
Type Right Hand
Length 210mm
Width 127mm
Thickness 68mm
Ball Stud 13mm

**Locker Hinge - Right Hand
0859/001**



Material Mild Steel
Finish Zinc Plated
Type Left Hand
Length 210mm
Width 127mm
Thickness 68mm
Ball Stud 13mm

**Concealed Hinge - Left Hand
0859/006**



Material 304 Stainless Steel
Type Left Hand
Opening Angle 180°

**Concealed Hinge - Right Hand
0859/007**



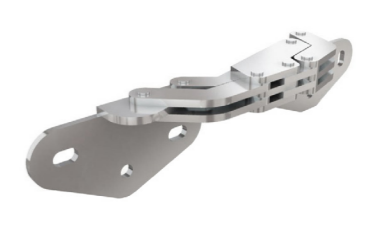
Material 304 Stainless Steel
Type Right Hand
Opening Angle 180°

**Concealed Hinge - 7 Axis
0486/70-1-3664**



Material 304 Stainless Steel
Type 7 Axis
Opening Angle 180°

**Concealed Hinge - 90° Opening
0486/70-1-3628**



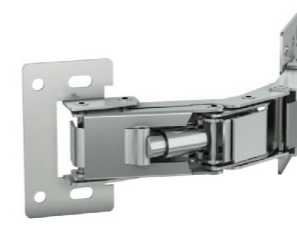
Material Mild Steel
Finish Zinc Plated
Length 126.5mm
Width 30.2mm
Opening 90°

**Concealed Hinge - 125° Opening
0486/70-1-3639**



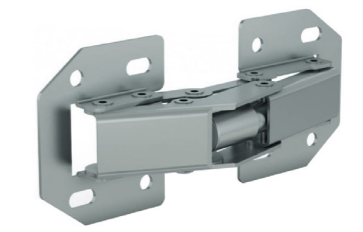
Material Mild Steel
Finish Zinc Plated
Length 44mm
Width 29mm
Opening 125°

**Concealed Hinge - 150° Opening
0486/70-1-9001**



Material Mild Steel
Finish Nickel Plated
Type Spring Loaded
Length 52mm
Width 121mm
Opening 150°

**Concealed Hinge - 90° Opening
0486/70-1-9003**



Material Mild Steel
Finish Nickel Plated
Type Spring Loaded
Length 44mm
Width 104.5mm
Opening 90°

HINGES - CONTINUOUS

Steel Hinge - 1800 x 25mm
2233/012



Material Mild Steel
Finish Self Colour
Length 1800mm
Width 25mm
Thickness 1mm

Steel Hinge - 1800 x 44mm
2233/020



Material Mild Steel
Finish Self Colour
Length 1800mm
Width 44mm
Thickness 1mm

S/S Hinge - 1800 x 100mm
2233/304S



Material 304 Stainless Steel
Length 1800mm
Width 100mm
Thickness 3mm
Pin 8mm

S/S Hinge - 1828 x 38mm
2233/316



Material Stainless Steel
Length 1828mm
Width 38.5mm
Thickness 1.2mm

S/S Hinge - 1828 x 50mm
2233/323



Material Stainless Steel
Length 1828mm
Width 50mm
Thickness 1.2mm

Aluminium Hinge - 1828 x 50mm
2233/439



Material Aluminium
Finish Self Colour
Length 1828mm
Width 50mm
Thickness 1.5mm

Zinc Plated Hinge - 1800 x 50mm
2233/623



Material Mild Steel
Finish Zinc Plated
Length 1800mm
Width 50mm
Thickness 1mm

Zinc Plated Hinge - 1800 x 75mm
2233/679



Material Mild Steel
Finish Zinc Plated
Length 1800mm
Width 75mm
Thickness 2mm

S/S Hinge - 1800 x 63mm
2234/6300



Material 304 Stainless Steel
Length 1800mm
Width 63mm
Thickness 1.5mm

HINGES

Screw Fix - 40 x 40mm
0486/54-1-3029



Material Reinforced Polyamide
Finish Black
Length 40mm
Width 40mm
Thickness 5mm
Fixing 5mm Countersunk

Screw Fix - 50 x 50mm
0486/54-1-3030



Material Reinforced Polyamide
Finish Black
Length 50mm
Width 50mm
Thickness 6mm
Fixing 6.5mm Countersunk

Stud Fix - 40 x 40mm
0486/54-1-3031



Material Reinforced Polyamide
Finish Black
Length 40mm
Width 40mm
Thickness 5mm
Fixing M5 Fixing

Leaf Hinge - 64/65.5mm
1346/006



Material Reinforced Polyamide
Finish Black
Length 64mm
Width 65.5mm
Thickness 13.5mm
Fixing 6mm Countersunk

Indent Hinge - 57/52mm
1346/008



Material Acetal
Finish Black
Length 57mm
Width 52mm
Thickness 9mm
Fixing 5mm Countersunk

Leaf Hinge - 64/67mm
1349/002



Material Reinforced Nylon
Finish Black
Length 64mm
Width 67mm
Thickness 5mm
Fixing 5.5mm Countersunk

Leaf Hinge - 47.5/5mm
1349/004



Material Reinforced Nylon
Finish Black
Length 47.5mm
Width 40mm
Thickness 5mm
Fixing 4mm Countersunk

Leaf Hinge - 102/67mm
1349/013



Material Reinforced Nylon
Finish White
Length 102mm
Width 67mm
Thickness 5mm
Fixing 5.5mm Countersunk

Window Plant On Hinge
1350/002



Material Reinforced Nylon
Pin Zinc Plated Steel
Finish Black
Length 100mm
Width 80mm
Thickness 12mm
Fixing 9mm Countersunk
To Suit 0.2mm Glass

HINGES

Canopy Hinge - 120/3mm
0948/002



Material Mild Steel
Finish Z/P, Clear Passivated
Type Bolt On
Length 120mm
Width 51mm
Thickness 3mm
Diameter 20mm
Fixing 6.5mm

Medium Hinge - 146.5/4mm
2216/003



Material Mild Steel
Finish Z/P, Clear Passivated
Type Bolt On
Length 146.5mm
Width 65mm
Thickness 4mm
Diameter 8mm
Fixing 6.5mm

S/S Medium Hinge - 146.5/4mm
2216/005



Material 316 Stainless Steel
Type Bolt On
Length 146.5mm
Width 65mm
Thickness 4mm
Diameter 8mm
Fixing 6.5mm

Small Hinge - 74.5/4mm
2216/006



Material Mild Steel
Finish Z/P, Clear Passivated
Type Bolt On
Length 74.5mm
Width 65mm
Thickness 4mm
Diameter 7mm
Fixing 6.5mm

S/S Small Hinge - 74.5/4mm
2216/007



Material 304 Stainless Steel
Type Bolt On
Length 74.5mm
Width 65mm
Thickness 4mm
Diameter 7mm
Fixing 6.5mm

Small Hinge - 104.5/3.5mm
2218/002



Material Mild Steel
Finish Z/P, Clear Passivated
Type Bolt On
Length 104.5mm
Width 50mm
Thickness 3.5mm
Diameter 6mm
Fixing 6mm

S/S Medium Hinge - 180/4mm
9820/6290



Material 316 Stainless Steel
Type Bolt On
Length 180mm
Width 85mm/57mm
Thickness 4mm
Diameter 8mm
Fixing 8.5mm

Small Hinge - 70/3.5mm
2218/003



Material Mild Steel
Type Bolt On
Length 70mm
Width 50mm
Thickness 3.5mm
Diameter 6mm
Fixing 6mm

Small Hinge - 151/4mm
9820/1151



Material 316 Stainless Steel
Type Bolt On
Length 151mm
Width 68mm/30mm
Thickness 4mm
Diameter 8mm
Fixing 8.2mm

HINGES

Friction Hinge - 30 x 35mm
0486/72-1-4137



Material Aluminium
Finish Black Anodised
Length 30mm
Width 35mm
Thickness 3mm
Fixing 4 x 3mm Countersunk
Torque Force 0-1Nm

Butt Hinge - 50 x 40mm
0486/52-1-3607



Material 304 Stainless Steel
Length 50mm
Width 40mm
Thickness 1mm
Opening 270°
Fixing 4 x 5mm Countersunk

Butt Hinge 40 x 40mm
0486/52-1-3861



Material 304 Stainless Steel
Length 40mm
Width 40mm
Thickness 2mm
Opening 270°
Fixing 4 x 3.5mm Countersunk

Butt Hinge - 75 x 40mm
0486/52-1-3990



Material 304 Stainless Steel
Length 75mm
Width 40mm
Thickness 1.5mm
Opening 270°
Fixing 6 x 5.1mm Countersunk

Butt Hinge - 50 x 50mm
0486/71-1-3553



Material 304 Stainless Steel
Length 50mm
Width 50mm
Thickness 2mm
Fixing 5mm Through
Torque to Close 1.5Nm

Friction Hinge - 65 x 55mm
0486/72-1-4146



Material Aluminium
Finish Black Anodised
Length 65mm
Width 55mm
Thickness 4.5mm
Fixing 4 x 6.5mm Counterbore
Torque Force 0-5Nm

Friction Hinge - 30 x 35mm
0486/72-1-4160



Material Aluminium
Finish Clear Anodised
Length 30mm
Width 35mm
Thickness 3mm
Fixing 4 x 3mm Countersunk
Torque Force 0-1Nm

Anti-Clockwise Hinge
9820/33309



Material Mild Steel
Finish Zinc Plated
Length 76.5mm
Fixing 4 x 9.5mm
Screws 2 x M8
Thread Length 17.2mm

Clockwise Hinge
9820/33311



Material Mild Steel
Finish Zinc Plated
Length 76.5mm
Fixing 4 x 9.5mm
Screws 2 x M8
Thread Length 17.2mm

HINGES - TILA & DOUBLE KNUCKLE

Bulb Seal Gasket - 2500mm
0486/27-1-3817



Material Rubber
Length 2500mm
To Be Used With Aluminium Hinges

Bulb Seal Gasket - 3000mm
0486/27-1-3818



Material Rubber
Length 3000mm
To Be Used With Aluminium Hinges

Aluminium Hinge - 2500mm
0486/73-1-3521



Material Aluminium
Finish Anodised
Length 2500mm
Width 33mm
Thickness 25mm
Opening 180°
Panel Suitability 24.4mm

Aluminium Hinge - 2000mm
0486/73-1-3520



Material Aluminium
Finish Anodised
Length 2000mm
Width 33mm
Thickness 25mm
Opening 180°
Panel Suitability 24.4mm

Tila Hinge - 2000 x 22mm
2229/2200



Material Aluminium
Finish Anodised
Length 2000mm
Width 32mm
Thickness 24mm
Opening 180°
Panel Suitability 22mm

Tila Hinge - 2700 x 22mm
2229/2270



Material Aluminium
Finish Anodised
Length 2700mm
Width 32mm
Thickness 24mm
Opening 180°
Panel Suitability 22mm

Tila Hinge - 3000 x 22mm
2229/2300



Material Aluminium
Finish Anodised
Length 3000mm
Width 32mm
Thickness 24mm
Opening 180°
Panel Suitability 22mm

Tila Hinge - 2200 x 29mm
2229/9220



Material Aluminium
Finish Anodised
Length 2200mm
Width 32mm
Thickness 24mm
Opening 180°
Panel Suitability 29mm

Tila Hinge - 3000 x 29mm
2229/9300



Material Aluminium
Finish Anodised
Length 3000mm
Width 32mm
Thickness 24mm
Opening 180°
Panel Suitability 29mm

IRONWORK

Locking Bar Tab - 20mm Bar
4044/004



Material Mild Steel
Finish Self Colour
Type Weld On
Length 80mm
Width 36mm
Height 36mm
To Suit 20mm Bar

Locking Bar Tab - 25mm Bar
4044/005



Material Mild Steel
Finish Self Colour
Type Weld On
Length 80mm
Width 36mm
Height 36mm
To Suit 25mm Bar

Locking Bar Bracket - 20mm Bar
4109/001



Material Forged Steel
Finish Self Colour
Type Weld On
Length 45mm
Width 26mm
Height 45mm
To Suit 20mm Bar

Locking Bar Bracket - 25mm Bar
4109/002



Material Forged Steel
Finish Self Colour
Type Weld On
Length 45mm
Width 26mm
Height 45mm
To Suit 25mm Bar

Locking Bar Hook - 21mm
4047/001



Material Forged Steel
Finish Self Colour
Type Weld On
Diameter 21mm
Length 82mm
Width 68mm
Height 26.5mm
To Suit 20mm Bar

Locking Bar Hook - 26mm
4047/002



Material Forged Steel
Finish Self Colour
Type Weld On
Diameter 26mm
Length 82mm
Width 68mm
Height 24.5mm
To Suit 25mm Bar

Eye Plate - Zinc Plated
3106/011



Material Mild Steel
Finish Zinc Plated
Type Weld On
Diameter 22mm
Length 152mm
Width 52mm
Thickness 5mm

Eye Plate - Self Colour
3106/001



Material Mild Steel
Finish Self Colour
Type Weld On
Diameter 22mm
Length 152mm
Width 51mm
Thickness 5mm

Eye Plate - Self Colour
3107/022



Material Mild Steel
Finish Self Colour
Type Weld On
Diameter 21.5mm
Length 245mm
Width 40mm
Thickness 7.5mm

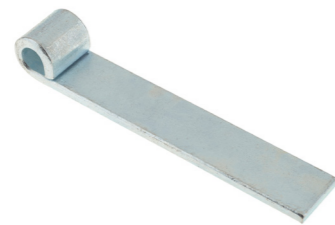
IRONWORK

**Straight Hinge 152.5mm / SC
0969/002**



Material Mild Steel
Finish Self Colour
Diameter 12.5mm
Length 152.5mm
Width 30mm
Thickness 6mm
Height 24.5mm

**Straight Hinge 152.5mm / ZP
0969/012**



Material Mild Steel
Finish Zinc Plated
Diameter 12.5mm
Length 152.5mm
Width 30mm
Thickness 6mm
Height 24.5mm

**Straight Hinge 153mm / SC
1002/013**



Material Mild Steel
Finish Self Colour
Diameter 12.5mm
Length 153mm
Width 39.5mm
Thickness 7.5mm
Height 29mm

**Straight Hinge 460mm / ZP
1002/012**



Material Mild Steel
Finish Zinc Plated
Diameter 12.5mm
Length 460mm
Width 30mm
Thickness 6mm
Height 25.5mm

**Straight Hinge 460mm / SC
1002/014**



Material Mild Steel
Finish Self Colour
Diameter 12.5mm
Length 460mm
Width 40mm
Thickness 8mm
Height 29mm

**Straight Hinge 460mm / ZP
1002/024**



Material Mild Steel
Finish Zinc Plated
Diameter 12.5mm
Length 460mm
Width 41mm
Thickness 8mm
Height 28.5mm

**Gudgeon Pin - 12.5 x 50mm
1016/002**



Material Mild Steel
Finish Zinc Plated
Type Bolt On
Diameter 12.5 x 50mm
Base Dimensions 84 x 30mm

**Gudgeon Pin - 12.5 x 48mm
1037/010**



Material Mild Steel
Finish Self Colour
Type Weld On
Diameter 12.5 x 48mm
Length 100mm
Height 25mm
Base Dimensions 26 x 52mm

**Tailboard Hinge Assembly
9934/0900**



Material Mild Steel
Finish Zinc Plated
Type Bolt On
Length 100mm
Height 34.75mm

LASHING RINGS

**Lightweight D Ring
5589/5151**



Material Mild Steel
Finish Zinc Plated
Length 62.5mm
Width 52mm
Depth 6mm
Load Lightweight
Fixing 10mm Through

**Elongated Lightweight D Ring
1062/001**



Material Mild Steel
Finish Z/P Clear Passivated
Length 79mm
Width 29mm
Depth 5mm
Load Lightweight
Fixing 7mm Through

**Stainless Steel Lashing Ring
1078/020**



Material Stainless Steel
Finish Polished
Plate Width 40mm
Plate Length 50mm
Ring Thickness 8mm
Ring Inner Diameter 50mm
Overall Depth 33mm

**Medium Duty - 500kg SWL
1057/001**



Material Pressed Steel
Finish Zinc Plated
Length 95mm
Width 102mm
Depth 25mm
Load Medium Duty
Fixing 7mm Countersunk
SWL 500kg

**Medium Duty - 1500kg SWL
1069/008**



Material Mild Steel
Finish Z/P Clear Passivated
Length 90mm
Width 84mm
Depth 13mm
Load Medium Duty
Fixing 2 x 10.2mm
SWL 1500kg

**Medium Duty - 500kg SWL
1057/0115**



Material 304 Stainless Steel
Finish Self Colour
Length 105mm
Width 105mm
Depth 25.5mm
Load Medium Duty
Fixing 4 x 7mm Countersunk
SWL 500kg

**Lightweight D Ring/ Dish
5589/515**



Material Mild Steel
Finish Z/P Clear Passivated
Length 103mm
Width 103mm
Depth 12.5mm
Load Lightweight
Fixing 10mm Through
SWL 362kg

**S/S Lightweight D Ring/Dish
5589/515SS**



Material Stainless Steel
Length 103mm
Width 103mm
Depth 12.5mm
Load Lightweight
Fixing 10mm Through

**Heavy Duty - 12,000kg SWL
1060/002**



Material Forged Steel
Finish Galvanised
Length 151mm
Width 172mm
Depth 24.5mm
Load Heavy Duty
SWL 12,000kg
Fixing Weld On

LED LIGHTING - INTERIOR

Cool White Oval Lamp, 12V
6500/115096W



Voltage	12V
LEDs	30
Length	150mm
Width	150mm
Depth	19mm
Lumens (Raw)	800lm
Lumens (Effective)	390lm
Current Draw	(13.8V) 0.53A
Cable Length	280mm

Blue Speciality Marker Lamp
6500/16BC12B



Voltage	12V
Length	58mm
Width	16mm
Depth	12.5mm

Cool White Door Scene Lamp
6500/186WC



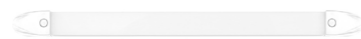
Voltage	12V
LEDs	8
Length	186mm
Width	49mm
Depth	31mm
Lumens (Raw)	240lm
Lumens (Effective)	180lm
Current Draw	(13.8V) 0.22A
Cable Length	400mm

White Rectangular Lamp, 12V
6500/148WW12



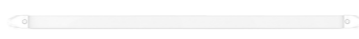
Voltage	12V
LEDs	15
Length	148mm
Width	71mm
Depth	19.5mm
Lumens (Raw)	675lm
Lumens (Effective)	185lm
Current Draw	(13.8V) 0.17A
Cable Length	200mm

Strip Lamp, Direct - 362mm
6500/2430WM



Voltage	12/24V
LEDs	18
Length	362mm
Width	25mm
Depth	11mm
Lumens (Effective)	269lm
Current Draw	(13.8V/28V) 0.26A/0.14A
Cable Length	200mm
End Caps	White

Strip Lamp, Direct - 662mm
6500/2460WM



Voltage	12/24V
LEDs	36
Length	662mm
Width	25mm
Depth	11mm
Lumens (Effective)	792lm
Current Draw	(13.8V/28V) 0.51A/0.26A
Cable Length	200mm
End Caps	White

Cool White Oval Lamp, 12V
6500/7515W



Voltage	12V
LEDs	15
Length	76mm
Width	76mm
Depth	9mm
Lumens (Raw)	230lm
Lumens (Effective)	180lm
Current Draw	(13.8V) 0.27A
Cable Length	200mm

Blue Speciality Lamp, 12V
6500/75CLB



Voltage	12V
LEDs	4
Length	75mm
Width	75mm
Depth	17mm
Current Draw	(13.8V) 0.06A
Cable Length	400mm

Strip Lamp, PIR, 12V
6500/40310-PIR



Voltage	12V
Length	310mm
Width	40mm
Depth	15mm
Lumens (Effective)	380lm
Light Output	6500K

LED LIGHTING - REAR

Multifunction Trailer Lamp, Left
6500/284RAWFML



Voltage	12/24V
Fixing	Left
Length	284mm
Width	100mm
Depth	37mm
Cable Length	280mm

Multifunction Trailer Lamp, Right
6500/284RAWFMR



Voltage	12/24V
Fixing	Right
Length	284mm
Width	100mm
Depth	37mm
Cable Length	280mm

Stop/Tail/Indicator, 12/24V
6500/12ARM



Voltage	12/24V
Type	Stop/Tail/Indicator
Length	131mm
Width	30mm
Depth	8mm
Cable Length	250mm

Low Profile Fog Lamp, 12/24V
6500/12FM



Voltage	12/24V
Type	Fog
LEDs	6
Length	131mm
Width	30mm
Depth	8mm
Current Draw	(13.8V/28V) 0.0A/0.0A

Low Profile Reverse Lamp, 12/24V
6500/12WM



Voltage	12/24V
Type	Reverse
LEDs	6
Length	131mm
Width	30mm
Depth	8mm
Current Draw	(13.8V/28V) 0.21A/0.21A

Stop/Tail/Indicator, 12/24V
6500/135ARME



Voltage	12/24V
Type	Stop/Tail/Indicator
Length	135mm
Width	38mm
Depth	24mm
Cable Length	180mm

Fog Lamp, 12/24V
6500/135FME



Voltage	12/24V
Type	Fog
Length	135mm
Width	38mm
Depth	24mm
Cable Length	180mm
Mounting	Surface Mount

Brake Light, 12/24V
6500/135RMES3



Voltage	12/24V
Type	Brake
Length	135mm
Width	38mm
Depth	24mm
Cable Length	180mm
Mounting	Surface Mount
Approval	S3 Approved

Reverse Lamp, 12/24V
6500/135WME



Voltage	12/24V
Type	Reverse
Length	135mm
Width	38mm
Depth	24mm
Cable Length	180mm
Mounting	Surface Mount

LED LIGHTING - REAR

**Dynamic Indicator Lamp
6500/385FWARM**



Voltage	12/24V
Type	Stop/Tail/Dynamic Indicator/Fog/Reverse
Length	387mm
Width	105mm
Depth	31mm

**Stop/Tail/Indicator/Fog/Reverse
6500/82CFWRACM**



Voltage	12/24V
Type	Stop/Tail/Indicator Fog/Reverse
Length	372mm
Width	101mm
Depth	30mm
Cable Length	300mm

**Surface Mounting Bracket
6500/95BKT**



Length	100mm
Width	100mm
Depth	23mm

**Fog Lamp, 12/24V
6500/95FM**



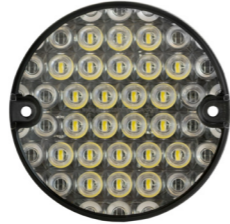
Voltage	12/24V
Type	Fog
Length	95mm
Width	95mm
Depth	18mm
Cable Length	200mm

**Stop/Tail/Indicator, 12/24V
6500/95STIM**



Voltage	12/24V
Type	Stop/Tail/Indicator
Length	95mm
Width	95mm
Depth	18mm
Cable Length	200mm

**Reverse, 12/24V
6500/95WM**



Voltage	12/24V
Type	Reverse
Length	95mm
Width	95mm
Depth	18mm
Cable Length	200mm

**Fog Lamp, 12/24V
6500/HBL140FM**



Voltage	12/24V
Type	Fog
Length	140mm
Width	140mm
Depth	83mm
Cable Length	300mm

**Stop/Tail/Indicator, 12/24V
6500/HBL140STIM**



Voltage	12/24V
Type	Stop/Tail/Indicator
Length	140mm
Width	140mm
Depth	83mm
Cable Length	300mm

**Reverse Lamp, 12/24V
6500/HBL140WM**



Voltage	12/24V
Type	Reverse
Length	140mm
Width	140mm
Depth	83mm
Cable Length	300mm

LED LIGHTING - SIDE MARKERS

**Cat 5 Side Marker Lamp, 12/24V
6500/44AMECSB**



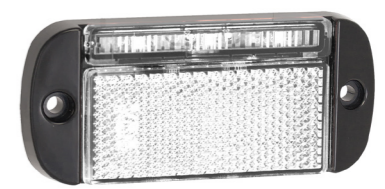
Voltage	12/24V
Length	100mm
Width	44mm
Depth	19mm
Cable Length	550mm
Approval	Cat 5

**Rear Marker, Reflector, 12/24V
6500/44RME**



Voltage	12/24V
Type	Rear, Reflector
Length	100mm
Width	44mm
Depth	12mm
Cable Length	500mm

**Front Marker, Reflector, 12/24V
6500/44WMEB**



Voltage	12/24V
Type	Front, Reflector
Length	100mm
Width	44mm
Depth	12mm
Cable Length	500mm

**Pendant Mounting Bracket
6500/44BKT**



Type Pendant Bracket

**Horizontal Mounting Bracket
6500/EU38BKT**



Type Horizontal Bracket

**Side Marker & Bracket - Amber
6500/1491AM**



Voltage	12/24V
Length	110mm
Width	47mm
Depth	65mm

**Side Marker, Reflector, 12/24V
6500/EU38AMB**



Voltage	12/24V
Type	Side, Reflector
Length	100mm
Width	38mm
Depth	13mm
Cable Length	350mm

**Rear Marker, Reflector, 12/24V
6500/EU38RMB**



Voltage	12/24V
Type	Rear, Reflector
Length	100mm
Width	38mm
Depth	13mm
Cable Length	350mm

**Front Marker, Reflector, 12/24V
6500/EU38WMB**



Voltage	12/24V
Type	Front, Reflector
Length	100mm
Width	380mm
Depth	13mm
Cable Length	350mm

LED LIGHTING - BLUE & RED

75 Series - Chrome, Red
6500/75CLR



Voltage 12V
LEDs 4
Length 75mm
Width 75mm
Depth 17mm

Pilot Light - Red
6500/PLR12



Voltage 12V
LEDs 1
Length 15mm
Width 15mm
Depth 30mm
Cable Length 400mm

181 Series - Red Rear Marker
6500/181RME



Voltage 12/24V
Length 28mm
Width 28mm
Depth 25mm
Cable Length 175mm

16 Series - Red Rear Marker
6500/16R12-2



Voltage 12V
Length 58mm
Width 16mm
Depth 12.5mm
Pack Twin

6505 Series - Red
6500/6505RM



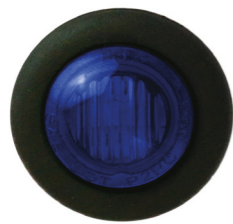
Voltage 12/24V
LEDs 5
Length 65mm
Width 30mm
Depth 24mm
Cable Length 300mm

Pilot Light - Blue
6500/PLB12



Voltage 12V
LEDs 1
Length 15mm
Width 15mm
Depth 30mm
Cable Length 400mm

181 Series - Blue Marker
6500/181BME



Voltage 12/24V
Length 28mm
Width 28mm
Depth 25mm
Cable Length 175mm

6505 Series - Blue
6500/6505BM



Voltage 12/24V
LEDs 5
Length 65mm
Width 30mm
Depth 24mm
Cable Length 300mm

16 Series - Blue Marker
6500/16BC12B



Voltage 24V
Length 58mm
Width 16mm
Depth 12.5mm

MISCELLANEOUS

Load Resistor, 12V
6500/LR12



Voltage 12V

Pressed Steel Pull Handle
6000/315002I



Material 304 Stainless Steel
Finish Polished
Length 333.5mm
Width 55mm
Thickness 25mm
Fixing 8.5mm

Stainless Steel Handle
2094/0873



Material 304 Stainless Steel
Grip Handle Material Rubber
Overall Length 334mm
Height 199.5mm
Depth 35mm
Can be used with Antiluce to lock

Square Flood Light, 12/24V
6500/10915BM



Voltage 12/24V
Type Flood Beam
LEDs 5 x 3W
Length 110mm
Width 140mm
Depth 35mm
Lumens Raw 1200lm
Lumens Effective 700lm

Tanky Handwash Unit
6688/525015050



Colour Black
Capacity 45 Litre
Height 430-450mm
Width 420mm
Depth 450mm
Weight 5,2kg

Clamp On Battery Connectors
9100/45000



Material Polypropylene Cover
Type Blister Pack
Fixing Clamp On

Magazine Net - 365mm
0365/185



Width 365mm
Height 185mm

Magazine Net - 310mm
0365/210



Width 310mm
Height 210mm

Vehicle Seat Cover
0288/001



Type Universal

MISCELLANEOUS

Single Coat Hook
2987/0051



Material Plastic Moulding
Finish Black
Type Single
Fixing 1 x 5mm
Length 51mm
Width 34mm
Thickness 19mm

Double Coat Hook
2987/0061



Material Plastic Moulding
Finish Black
Type Double
Fixing 2 x 5mm
Length 51mm
Width 60mm
Thickness 19mm

Screw On Coat Hook
1021/011



Material Mild Steel
Finish Zinc Plated
Type Screw On
Fixing 2 x 7mm Countersunk
Length 89mm
Width 20mm
Height 41mm

Lightweight Coat Hook
1021/101



Material Mild Steel
Finish Zinc Plated
Type Screw On
Fixing 2 x 5mm
Length 62mm
Width 19mm
Thickness 20mm
Height 20mm

Aluminium Hook
1555/001



Material Aluminium
Length 125mm
Fixing 3/4 BZP Screws

Black Hook (Set of 5)
1555/002



Finish Black
Length 100mm

Coat Hook
1021/200



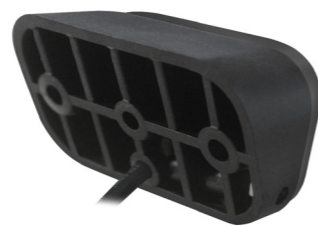
Material 316 Stainless Steel
Finish Polished

Clearance/Scene Lamp - White
6500/7705WM



Length 77mm
Height 44mm
Depth 22mm
Voltage 12/24V
LEDs 3 x 1.5W
Raw Lumens 570lm
Effective Lumens 302lm
Colour Temperature 6000K

Angled Rubber Mounting Pad
6500/7705RP3



Material Rubber
Angle 30°

PULL HANDLES

246mm Plastic Handle
0790/001



Material Polypropylene
Colour Black
Length 246mm
Width 23.5mm
Thickness 40mm
Fixing 7mm

160mm Pressed Steel Handle
0768/001



Material Mild Steel
Finish Black PVC Coating
Length 160mm
Width 20.5mm
Thickness 34mm
Fixing 4mm Countersunk

102mm Aluminium Handle
0486/19-1-3425



Material Aluminium
Finish Polished
Length 102mm
Width 10mm
Thickness 32mm
Fixing M5 Tapped

275mm Cushion Grip Handle
5589/415



Material Polypropylene
Colour Black
Length 275mm
Width 26.5mm
Thickness 55.5mm
Fixing 9mm

184.5mm Cushion Grip Handle
5589/414



Material Polypropylene
Colour Black
Length 184.5mm
Width 28.5mm
Thickness 55.5mm
Fixing 9mm

120mm Pressed Steel Handle
0486/19-1-3797



Material 304 Stainless Steel
Finish Self Colour
Length 120mm
Width 15mm
Thickness 21mm
Fixing 4.5mm

295mm Cushion Grip Handle
0080/001



Material Polyurethane Foam
Colour Black
Length 295mm
Width 101mm
Thickness 72mm
Fixing 7mm

202.5mm Plastic Handle
0847/003



Material Polypropylene
Colour Black
Length 205mm
Width 28.5mm
Thickness 47.5mm
Fixing 9mm

172mm Plastic Handle
0847/001



Material Polypropylene
Colour Black
Length 172mm
Width 29.5mm
Thickness 39mm
Fixing 5.5mm

RIVETS - BLINDBOLT

Blindbolt - 2.03-9.63cm / SS
7767/817SS



Material Stainless Steel
Diameter 6.4mm
Grip Range 2.03-9.53mm
Length 14mm
Total Length 23.7mm
Thread Diameter 12.7mm

Blindbolt - 2.03-9.63cm / ZP
7767/817ZP



Material Zinc Plated Steel
Diameter 6.4mm
Grip Range 2.03-9.53mm
Length 14mm
Total Length 23.7mm
Thread Diameter 12.7mm

Blindbolt - 2.03-9.63cm / ZL
7767/817AL



Material Aluminium
Diameter 6.4mm
Grip Range 2.03-9.53mm
Length 14mm
Total Length 23.7mm
Thread Diameter 12.7mm

Blindbolt - 2.03-15.87 / SS
7767/824SS



Material Stainless Steel
Diameter 6.4mm
Grip Range 2.03-15.87mm
Length 19.05mm
Total Length 32.92mm
Thread Diameter 12.7mm

Blindbolt - 2.03-15.87 / ZP
7767/824ZP



Material Zinc Plated Steel
Diameter 6.4mm
Grip Range 2.03-15.87mm
Length 19.05mm
Total Length 32.92mm
Thread Diameter 12.7mm

Blindbolt - 2.03-15.87 / AL
7767/824AL



Material Aluminium
Diameter 6.4mm
Grip Range 2.03-15.87mm
Length 19.05mm
Total Length 32.92mm
Thread Diameter 12.7mm

Blindbolt - 3.17-12.07 / ZP
7767/821CS



Material Zinc Plated Steel
Diameter 6.4mm
Grip Range 3.17-12.07mm
Length 16.76-16.51mm
Total Length 27mm
Thread Diameter 10.03mm

Blindbolt - 1.7-6.8 / ZP
7767/613ZP



Material Zinc Plated Steel
Diameter 4.8mm
Grip Range 1.7-6.8mm
Length 10mm
Total Length 17mm
Thread Diameter 9.5mm

Blindbolt - 1.7-11 / ZP
7767/617ZP



Material Zinc Plated Steel
Diameter 4.8mm
Grip Range 1.7-11mm
Length 13.5mm
Total Length 23.4mm
Thread Diameter 9.5mm

RIVETS - FASTAINER

Fastainer - 23.85-26.9mm
7766/1216



Grip Range 23.85-26.9mm
Under Head Length 65mm
Break Point Length 25.4mm
Shoulder Length 12.5mm
Head Diameter 21.6mm

Fastainer - 14.3-17.5mm
7766/1210



Grip Range 14.3-17.5mm
Under Head Length 54mm
Break Point Length 15.9mm
Head Diameter 21.6mm

Fastainer - 15.9-19mm
7766/1211



Grip Range 15.9-19mm
Under Head Length 55mm
Break Point Length 17.5mm
Shoulder Length 4.6mm
Head Diameter 21.6mm

Fastainer - 17.5-20.6mm
7766/1212



Grip Range 17.5-20.6mm
Under Head Length 55mm
Break Point Length 19mm
Shoulder Length 6mm
Head Diameter 21.6mm

Fastainer - 19.1-22.2mm
7766/1213



Grip Range 19.1-22.2mm
Under Head Length 60mm
Break Point Length 20.6mm
Shoulder Length 7.9mm
Head Diameter 21.6mm

Fastainer - 20.65-23.75mm
7766/1214



Grip Range 20.65-23.75mm
Under Head Length 60mm
Break Point Length 22mm
Shoulder Length 9.5mm
Head Diameter 21.6mm

Fastainer - 22.2-25.35mm
7766/1215



Grip Range 22.2-25.35mm
Under Head Length 62mm
Break Point Length 23.8mm
Shoulder Length 10.9mm
Head Diameter 21.6mm

Fastainer - 33.1-33.3mm
7766/1220



Grip Range 30.1-33.3mm
Under Head Length 73mm
Break Point Length 31.7mm
Shoulder Length 14.2mm
Head Diameter 21.6mm

Fastainer Shell
7766/1200SH



Flange Diameter 31.5mm

RIVETS - FASTBOLT

**Boltlok - 4.8-8.0mm
7765/B804**



Material Medium Carbon Steel
Finish Zinc Plated
Pin 6.4mm
Length To Breakoff 15.9mm
Grip Range 4.8-8.0mm

**Boltlok - 6.4-9.5mm
7765/B805**



Material Medium Carbon Steel
Finish Zinc Plated
Pin 6.4mm
Length To Breakoff 17.4mm
Grip Range 6.4-9.5mm

**Boltlok - 8.0-11.0mm
7765/B806**



Material Medium Carbon Steel
Finish Zinc Plated
Pin 6.4mm
Length To Breakoff 19mm
Grip Range 6.4-9.5mm

**Boltlok - 9.5-12.7mm
7765/B807**



Material Medium Carbon Steel
Finish Zinc Plated
Pin 6.4mm
Length To Breakoff 20.6mm
Grip Range 9.5-12.7mm

**Boltlok - 11.0-14.3mm
7765/B808**



Material Medium Carbon Steel
Finish Zinc Plated
Pin 6.4mm
Length To Breakoff 22.2mm
Grip Range 11.0-14.3mm

**Boltlok - 12.7-15.9mm
7765/B809**



Material Medium Carbon Steel
Finish Zinc Plated
Pin 6.4mm
Length To Breakoff 23.8mm
Grip Range 12.7-15.9mm

**Boltlok - 14.3-17.4mm
7765/B810**



Material Medium Carbon Steel
Finish Zinc Plated
Pin 6.4mm
Length To Breakoff 25.4mm
Grip Range 14.3-17.4mm

**Boltlok - 17.4-20.6mm
7765/B812**



Material Medium Carbon Steel
Finish Zinc Plated
Pin 6.4mm
Length To Breakoff 28.6mm
Grip Range 17.4-20.6mm

**Boltlok Collar
7765/C800**



Material Low Carbon Steel
Finish Zinc Plated
Diameter 3/16"
Collar Regular

RIVETS - GRIPTAINER

**Griptainer - 13.0-14.9mm
7764/00B**



Bolt Length 14mm
Grip Range 13.0-14.9mm
Thread 5/16 UNC
Shear Strength 14 Kn
Tensile Strength 20 Kn
Drive Bit T55
Recommended Assembly Torque 17-20 Nm

**Griptainer - 14.5-20.5mm
7764/10B**



Bolt Length 16mm
Grip Range 14.5-15.6mm
Thread 5/16 UNC
Shear Strength 14 Kn
Tensile Strength 20 Kn
Drive Bit T55
Recommended Assembly Torque 17-20 Nm

**Griptainer - 17.9-19.7mm
7764/11B**



Bolt Length 19.05mm
Grip Range 17.9-19.7mm
Thread 5/16 UNC
Shear Strength 14 Kn
Tensile Strength 20 Kn
Drive Bit T55
Recommended Assembly Torque 17-20 Nm

**Griptainer - 21.3-23.1mm
7764/12B**



Bolt Length 22.2mm
Grip Range 21.3-23.1mm
Thread 5/16 UNC
Shear Strength 14 Kn
Tensile Strength 20 Kn
Drive Bit T55
Recommended Assembly Torque 17-20 Nm

**Griptainer - 24.5-25.9mm
7764/13B**



Bolt Length 25.4mm
Grip Range 24.5-25.9mm
Thread 5/16 UNC
Shear Strength 14 Kn
Tensile Strength 20 Kn
Drive Bit T55
Recommended Assembly Torque 17-20 Nm

**Griptainer Nut - 7mm
7764/N0N**



Nut Length 7mm

**Griptainer Nut - 9.52mm
7764/N1N**



Nut Length 9.52mm

**Griptainer Nut - 12.7mm
7764/N2N**



Nut Length 12.7mm

**Griptainer Nut - 15.87mm
7764/N3N**



Nut Length 15.87mm

RIVETS - MULTIGRIP

**Multigrip Rivet - 3.2-7.9mm
7768/48120K**



Material Aluminium/Steel
Type 120° Countersunk
Head
Length 12mm
Grip Range 3.2-7.9mm
Diameter 4.8mm
Flange Size 8.6mm

**Multigrip Rivet - 6.3-12.7mm
7768/48180K**



Material Aluminium/Steel
Type 120° Countersunk
Head
Length 18mm
Grip Range 6.3-12.7mm
Diameter 4.8mm
Flange Size 8.6mm

**Multigrip Rivet - 6.4-12.7mm
7768/48180L**



Material Aluminium/Steel
Type Extra Large Head
Length 18mm
Grip Range 6.4-12.7mm
Diameter 4.8mm
Flange Size 15.85mm

**Multigrip Rivet - 1.6-6.4mm
7768/48100L**



Material Aluminium/Steel
Type Extra Large Head
Length 10mm
Grip Range 1.6-6.4mm
Diameter 4.8mm
Flange Size 15.85mm

**Multigrip Rivet - 5.5-9.5mm
7768/32120D**



Material Aluminium/Steel
Type Dome Head
Length 12mm
Grip Range 5.5-9.5mm
Diameter 3.2mm
Flange Size 6.3mm

**Multigrip Rivet - 1.6-6.4mm
7768/48100D**



Material Aluminium/Steel
Type Dome Head
Length 10mm
Grip Range 1.6-6.4mm
Diameter 4.8mm
Flange Size 9.5mm

**Multigrip Rivet - 4.8-11.1mm
7768/48150D**



Material Aluminium/Steel
Type Dome Head
Length 15mm
Grip Range 4.8-11.1mm
Diameter 4.8mm
Flange Size 9.5mm

**Multigrip Rivet - 6.3-12.7mm
7768/48180D**



Material Aluminium/Steel
Type Dome Head
Length 18mm
Grip Range 6.3-12.7mm
Diameter 4.8mm
Flange Size 9.5mm

**Multigrip Rivet - 12.7-19.8mm
7768/48250D**



Material Aluminium/Steel
Type Dome Head
Length 25mm
Grip Range 12.7-19.8mm
Diameter 4.8mm
Flange Size 9.5mm

ROD LOCKS & HANDLES

**3 Point Lock - Left Hand, 2310mm
0770/001**



Material Mild Steel
Finish Zinc Plated
Type 3 Point, Left Hand
Length 2310mm
Throw 35mm
Linkage Rods Ø9.5mm
Fixing Ø5mm Countersunk

**3 Point Lock - Right Hand, 2310mm
0770/002**



Material Mild Steel
Finish Zinc Plated
Type 3 Point, Right Hand
Length 2310mm
Throw 35mm
Linkage Rods Ø9.5mm
Fixing Ø5mm Countersunk

**2 Point Lock - Left Hand, 2310mm
0771/001**



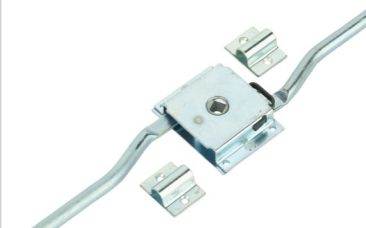
Material Mild Steel
Finish Zinc Plated
Type 2 Point, Left Hand
Length 2310mm
Throw 35mm
Linkage Rods Ø9.5mm
Fixing Ø5mm Countersunk

**2 Point Lock - Right Hand, 2310mm
0771/002**



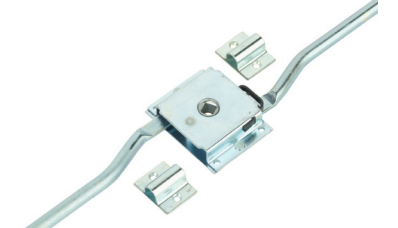
Material Mild Steel
Finish Zinc Plated
Type 2 Point, Right Hand
Length 2310mm
Throw 35mm
Linkage Rods Ø9.5mm
Fixing Ø5mm Countersunk

**2 Point Lock - Left Hand, 2210mm
5589/218**



Material Mild Steel
Finish Zinc Plated
Type Left Hand
Length 2210mm
Throw 24mm
Linkage Rods 9.5mm
Fixing 4mm

**2 Point Lock - Right Hand, 2210mm
5589/216**



Material Mild Steel
Finish Zinc Plated
Type Right Hand
Length 2210mm
Throw 24mm
Linkage Rods 9.5mm
Fixing 4mm

**Interior/Exterior Handle
4222/1861711***



Material Zinc Die-Cast
Finish Black
Keys Mixed
Hole Centres 42mm
Panel Up to 70mm
Fixing 8mm bar secured with roll pin

**Lever Handle - Mixed Keys, 45mm
4222/515**



Material Zinc Die-Cast
Finish Black Powder Coated
Type Locking, Mixed Keys
Length 130mm
Thickness 43mm
Square 110 x 8mm
Rotation 360°
Hole Centres 45mm
Fixing 5.5mm Countersunk

**Lever Handle - Locking, 38mm
5589/409**



Material 304 Stainless Steel
Finish Self Colour
Type Padlockable
Length 185mm
Thickness 42mm
Square 85.5mm x 8mm
Hole Centres 38mm
Fixing 6.5mm Countersunk

RUBBER BUFFERS

126mm Light Duty Buffer
2500/002



Material	Synthetic Rubber
Colour	Black
Length	126mm
Width	41mm
Stand-Off	43.5mm
Fixing	8mm

148mm Medium Duty Buffer
2503/002



Material	Synthetic Rubber
Colour	Black
Length	148mm
Width	49.5mm
Stand-Off	50mm
Fixing	12mm

200mm Medium Duty Buffer
2503/001



Material	Synthetic Rubber
Colour	Black
Length	200mm
Width	50.5mm
Stand-Off	53mm
Fixing	12.5mm

248.5mm Medium Duty Buffer
2503/003



Material	Synthetic Rubber
Colour	Black
Length	248.5mm
Width	49mm
Stand-Off	51mm
Fixing	12mm

75mm Conical Buffer
2028/003



Material	Synthetic Rubber
Colour	Black
Base Diameter	64.5mm
Top Diameter	55mm
Stand-Off	76mm
Fixing	10mm

98mm Conical Buffer
2028/004



Material	Synthetic Rubber
Colour	Black
Base Diameter	65mm
Top Diameter	50mm
Stand-Off	98mm
Fixing	9.5mm

12mm Round Buffer
2028/001



Material	Synthetic Rubber
Colour	Black
Base Diameter	24mm
Top Diameter	24mm
Stand-Off	12mm
Fixing	4mm

22mm Round Buffer
2026/001



Material	Synthetic Rubber
Colour	Black
Base Diameter	32mm
Top Diameter	32mm
Stand-Off	22mm
Fixing	6.2mm

100mm Conical Buffer
2028/005



Material	Synthetic Rubber
Colour	Black
Base Diameter	64.5mm
Top Diameter	50mm
Stand-Off	100mm
Fixing	9.5mm

RUB RAIL / J CHANNELS / DOOR SEALS

Door Buffer Strip Carrier
2463/001



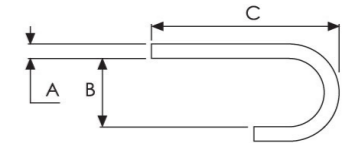
Material	ABS
Length	2000mm
Width	26mm
Depth	10mm

Sealing Profile
2463/002



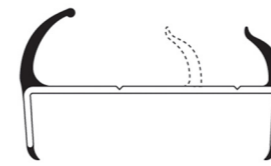
Material	PVC
Length	2000mm
Width	20mm
Depth	29mm

'J' Channel
2880/001



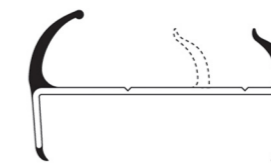
Material	Aluminium
Finish	Self Colour
Length	5m
A	2mm
B	9mm
C	25.4mm

Container Door Seal - 83mm
0535/083



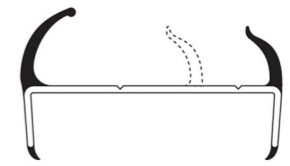
Material	PVC
Length	5m
Panel	83mm
Carrier	21mm
Seal	28mm

Container Door Seal - 21mm
0535/021



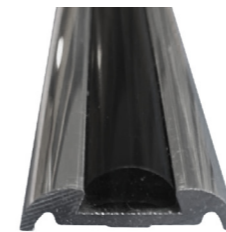
Material	PVC
Length	5m
Panel	21mm
Carrier	20mm
Seal	27mm

Container Door Seal - 30mm
0535/030



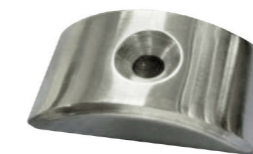
Material	PVC
Length	5m
Panel	30mm
Carrier	24mm
Seal	27mm

Polished Rail & Black PVC Insert
5444/010



Material	Aluminium Herzim Rail & Black PVC
Length	3m
Width	25mm
Depth	6.4mm

Rail End Cap
5444/011



Material	Aluminium Herzim
Fixing	Countersunk
To Suit	5444/010
Quantity	Pack of 2

Drip Rail - White
5245/JDRW



Material	Vinyl PVC
Colour	White
Length	1m
Height	23mm
Depth	12.5mm

SAFETY PRODUCTS

Bio Kit Cabinet
6688/532113015



Fixing	Suction Cup
Length	325mm
Width	270mm
Depth	71mm

First Aid Kit - Midi Case
1230/10220



Length	260mm
Width	210mm
Depth	60mm

First Aid Kit - Wall Mounted
1230/10221



Length	263.5mm
Width	169.5mm
Depth	83mm

Fire Extinguisher - 2kg
1225/02900



Type	Dry Powder
Capacity	2kg
Kitemarked	BS EN3: 1996

Fire Blanket
1226/003



Length	1100mm
Width	1100mm
Casing Dimensions	210 x 165mm
Kitemarked	BS EN 1869: 1997

Fire Extinguisher - 1kg
1225/02908



Type	Dry Powder
Capacity	1kg
Kitemarked	BS EN3: 1996

PCV First Aid Kit Bag
1230/10226



Type	Blue Dot - Public Carrying Vehicle
------	------------------------------------

Fire Extinguisher - 600g
1225/002



Material	Aluminium
Type	Dry Powder
Capacity	600g
Kitemarked	BS 6165: 2002
Rated	21B

Handeman Xtra Hand Wash Unit 12V
1942/HMX12



Capacity	3.3 Ltr (3Ltr Usable)
Height	370mm
Width	310mm
Voltage	12 Volt
Bowl Open Depth	370mm
Bowl Closed Depth	220mm

SEALANT

Wellseal Jointing Compound
2191/211561



Colour	Brown
Type	Jointing Compound
Capacity	100ml

Korapur 135 - White, Cartridge
2191/214254



Colour	White
Type	Cartridge
Capacity	300ml
Quantity	12 per box

Korapur 140 - White, Sausage
2191/157717



Colour	White
Type	Sausage
Capacity	600ml
Quantity	12 per box

Korapur 125 - White, Cartridge
2191/213793



Colour	White
Type	Cartridge
Capacity	300ml
Quantity	12 per box

Korapur 175 - Black, Sausage
2191/217235



Colour	Black
Type	Sausage
Capacity	600ml
Quantity	12 per box

Korapur 115 - White, Cartridge
2191/219965



Colour	White
Type	Cartridge
Capacity	300ml
Quantity	12 per box

Korasolv CL17
2191/215437



Colour	Transparent
Type	Cleaner
Capacity	250ml

Korabond HG 17
2191/215441



Colour	Black
Type	Primer
Capacity	250ml

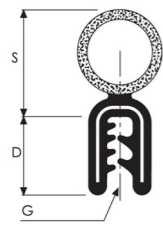
Manual Applicator Gun, 600ml
2189/046



Capacity	300ml Sausages
----------	----------------

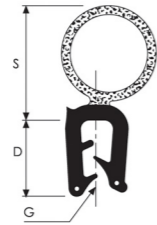
SEALING PROFILES - BOOT SEAL & EDGE TRIM

Top Tube Seal - 12mm
4833/003



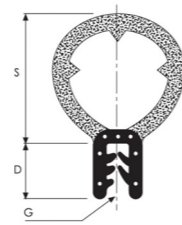
Length 25m
Depth 12mm
Grip Range 1 - 2mm
Seal 16mm

Top Tube Seal - 12mm
4833/0032



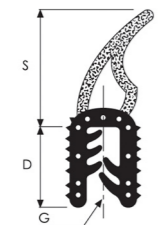
Length 25m
Depth 12mm
Grip Range 1 - 3.5mm
Seal 19mm

Top Tube Seal - 11mm
4873/003



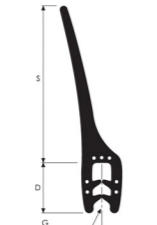
Length 25m
Depth 11mm
Grip Range 0.5 - 1.5mm
Seal 25mm

Top Tube Seal - 13mm
6300/001



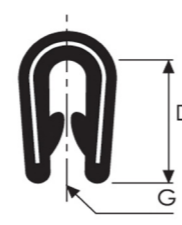
Length 50m
Depth 13mm
Grip Range 2 - 3mm
Seal 17mm

Top Leaf Seal - 12mm
4845/001



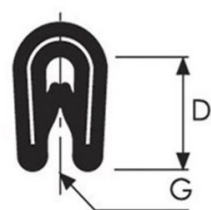
Length 25m
Depth 12mm
Grip Range 1.5 - 3.5mm
Seal 41mm

Edge Trim - 12mm
4896/002



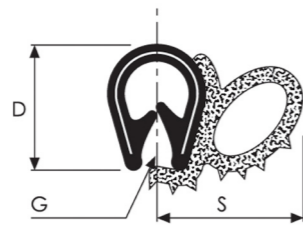
Length 50m
Depth 12mm
Grip Range 0.7 - 2.5mm

Edge Trim - 8mm
4901/001



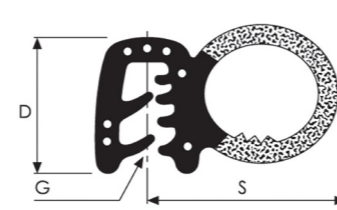
Length 50m
Depth 8mm
Grip Range 0.5 - 1.5mm

Side Tube Seal - 10mm
6272/001



Length 25m
Depth 10mm
Grip Range 2 - 3mm
Seal 14mm

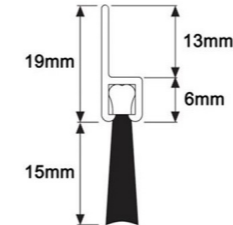
Side Tube Seal - 12mm
6279/001



Length 50m
Depth 12mm
Grip Range 1.5 - 2.5mm
Seal 20mm

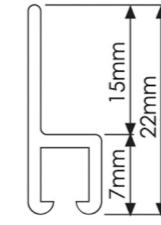
SEALING PROFILES - BRUSH SEAL

19mm Brush Strip & Carrier
6312/1155



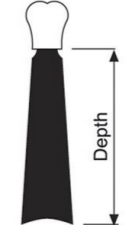
Carrier Aluminium
Length 2.5m
Depth 19mm
13mm
6mm
Brush Strip Nylon 4 x 15mm

22mm Carrier
6312/225



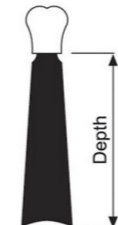
Carrier Aluminium
Length 2.5m
Depth 19mm
15mm
7mm
Brush Strip Suits 5mm

25mm Brush Strip
6311/2255



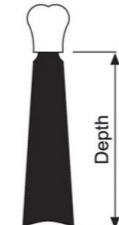
Material Nylon
Length 2.5m
Depth 25mm
Carrier Suits 5mm

50mm Brush Strip
6311/2505



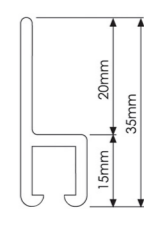
Material Nylon
Length 2.5m
Depth 50mm
Carrier Suits 5mm

75mm Brush Strip
6311/2755



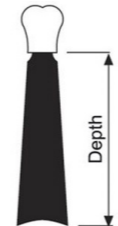
Material Nylon
Length 2.5m
Depth 75mm
Carrier Suits 5mm

35mm Carrier
6312/325



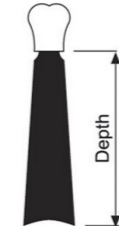
Material Nylon
Length 2.5m
Depth 35mm
Carrier Suits 8mm

38mm Brush Strip
6311/3385



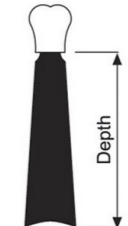
Material Nylon
Length 2.5m
Depth 38mm
Carrier Suits 8mm

50mm Brush Strip
6311/3505



Material Nylon
Length 2.5m
Depth 50mm
Carrier Suits 8mm

101mm Brush Strip
6311/31015



Material Nylon
Length 2.5m
Depth 101mm
Carrier Suits 8mm

SLAM LOCKS

Slam Lock With Handle, Left Hand
0860/001



Material Mild Steel
Finish Zinc Plated
Tongue Finish Malleable Iron
Type Left Hand
Length 86.5mm
Width 52.5mm
Thickness 16mm
Tounge 16mm
Fixing 5mm

Slam Lock With Handle, Right Hand
0860/002



Material Mild Steel
Finish Zinc Plated
Tongue Finish Malleable Iron
Type Right Hand
Length 86.5mm
Width 52.5mm
Thickness 16mm
Tounge 16mm
Fixing 5mm

Slam Lock Striker Plate
2276/001



Material Malleable Iron
Finish Self Colour
Tongue Finish Nylon
Length 52mm
Width 18mm
Thickness 12.5mm
Fixing 5.2mm

Slam Lock, Type A
2410/001



Material Mild Steel
Finish Zinc Plated
Tongue Finish Malleable Iron
Type Type A
Length 92mm
Width 86.5mm
Thickness 26.5mm
Tongue 20mm
Fixing 7 x 14mm

Slam Lock, Type B
2410/002



Material Mild Steel
Finish Zinc Plated
Tongue Finish Malleable Iron
Type Type B
Length 92mm
Width 86.5mm
Thickness 26.5mm
Tongue 20mm
Fixing 7 x 14mm

Nose Down End Slam Bolt
0486/16-1-3433



Material Mild Steel
Finish Z/P, Clear Passivated
Type Nose Down
Length 56mm
Width 50mm
Thickness 28mm
Tongue 12mm
Fixing 4mm

Flush Pull Latch
0810/001



Material Polypropylene
Finish Black
Diameter 61.5mm
Grip 26.5mm

Ring Tail Slam Bolt
2467/001



Material Mild Steel
Finish Z/P, Clear Passivated
Length 34mm
Width 40mm
Depth 17mm
Fixing 2 x 5mm

Slam Lock - No Handle
9800/2056



Material Mild Steel
Finish Zinc Plated
Tongue Material Zinc Die-Cast
Length 88mm
Width 68.5mm
Thickness 18.5mm
Tongue 11mm
Fixing 5.5mm

SPRING BOLTS

Right Hand - Ø5/12mm
0486/12-1-3862



Material Mild Steel
Finish 304 Stainless Steel
Type Right Hand
Fixing 4 x 4mm
Length 82mm
Width 21mm
Height 14mm
Stroke 12mm
Pin Diameter 5mm

Left Hand - Ø5/12mm
0486/12-1-3863



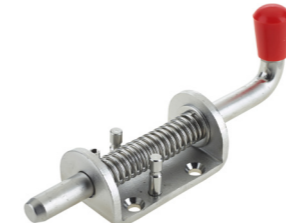
Material Mild Steel
Finish 304 Stainless Steel
Type Left Hand
Fixing 4 x 4mm
Length 82mm
Width 21mm
Height 14mm
Stroke 12mm
Pin Diameter 5mm

Base Retaining - Ø10/29mm
0839/100



Material 304 Stainless Steel
Finish 304 Stainless Steel
Type Base Retaining
Fixing 4 x 5mm
Length 59.5mm
Width 30mm
Height 50.5mm
Stroke 30.5mm
Pin Diameter 10mm

Peg Retaining - Ø12.5/29mm
0837/020



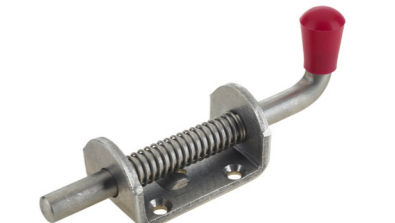
Material 304 Stainless Steel
Finish 304 Stainless Steel
Type Peg Retaining
Fixing 4 x 10mm
Length 75.5mm
Width 40mm
Height 63mm
Stroke 29mm
Pin Diameter 12.5mm

Base Retaining - Ø10/34mm
0839/002



Material 304 Stainless Steel
Finish 304 Stainless Steel
Type Base Retaining
Fixing 4 x 6.5mm
Length 72mm
Width 39.5mm
Height 56mm
Stroke 34mm
Pin Diameter 10mm

Base Retaining - Ø12.5/28.5mm
0843/001



Material 304 Stainless Steel
Finish 304 Stainless Steel
Type Base Retaining
Fixing 4 x 11mm
Length 76mm
Width 41.5mm
Height 69mm
Stroke 28.5mm
Pin Diameter 12.5mm

Shoot Bolt - Ø19/25mm
0838/0021



Material Mild Steel
Finish Self Colour
Type Weld On
Length 79.5mm
Width 38mm
Stroke 25mm
Pin Diameter 19mm

Spring Bolt Cover - Black
0837/010



Material PVC Moulding
Finish Black
Length 76.5mm
Width 43mm
Height 41mm
Pin Diameter 13mm

Spring Bolt Cover - Red
0837/011



Material PVC Moulding
Finish Red
Length 76.5mm
Width 43mm
Height 41mm
Pin Diameter 13mm

SPRING BOLTS

Peg Retaining - Ø12.5/29mm
0837/001



Material Mild Steel
Finish Zinc Plated
Type Peg Retaining
Fixing 4 x 10mm
Length 73.5mm
Width 40mm
Height 63mm
Stroke 29mm
Pin Diameter 12.5mm

Base Retaining - Ø10/34mm
0839/001



Material Mild Steel
Finish Z/P Clear Passivated
Type Base Retaining
Fixing 4 x 6.5mm
Length 73mm
Width 40mm
Height 57.5mm
Stroke 34mm
Pin Diameter 10mm

Base Retaining - Ø12.5/51mm
0841/001



Material Mild Steel
Finish Zinc Plated
Type Base Retaining
Fixing 4 x 7mm
Length 118mm
Width 40mm
Height 94mm
Stroke 51mm
Pin Diameter 12.5mm

Base Retaining - Ø16/62.5mm
0840/002



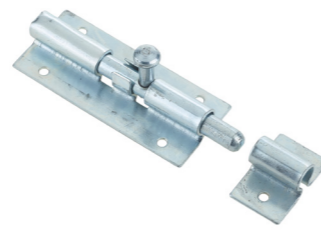
Material Mild Steel
Finish Z/P, Clear Passivated
Type Base Retaining
Fixing 4 x 6mm
Length 141mm
Width 41mm
Height 170mm
Stroke 62.5mm
Pin Diameter 16mm

End Slam Bolt - 127.5 x 51.5mm
0833/001



Material Mild Steel
Finish Z/P, Clear Passivated
Length 127.5mm
Width 51.5mm
Thickness 39.5mm
Tongue 15.6mm
Fixing 7mm

Spring Bolt - Ø8/14mm
0853/011



Material Mild Steel
Finish Z/P, Clear Passivated
Fixing 6 x 3.5mm
Length 77mm
Width 32.5mm
Height 29mm
Stroke 14mm
Pin Diameter 8mm

Nose Down Bolt - 56 x 50mm
0486/16-1-3433



Material Mild Steel
Finish Z/P, Clear Passivated
Type Nose Up
Length 56mm
Width 50mm
Thickness 28mm
Tongue 12mm
Fixing 4mm

Nose Up Bolt - 56 x 50mm
0486/16-1-3628



Material Mild Steel
Finish Z/P, Clear Passivated
Type Nose Down
Length 56mm
Width 50mm
Thickness 28mm
Tongue 12mm
Fixing 4mm

Lightweight Shoot Bolt - Ø7/15mm
0486/16-1-3647



Material Mild Steel
Finish Z/P, Clear Passivated
Type Bolt On
Fixing 2 x 5mm
Length 43.5mm
Width 11mm
Stroke 15mm
Pin Diameter 7mm
End Plate Dimensions 35 x 11 x 2mm

STEPS

Folding Access Step
0979/007



Material 304 Stainless Steel
Finish Chrome Polished
Length 138mm
Width 120mm
Depth 113mm
Fixings 10mm

Recessed Access Step
4280/001



Material Cast Aluminium
Finish Polished
Length 165mm
Width 140mm
Depth 96mm
Fixings 6mm

Recessed Access Step - Moulded
9000/9/00950



Material Glass Reinforced Nylon
Finish Black
Length 165mm
Width 142mm
Depth 97.5mm
Fixings 5mm

Slide Out Step - Manual
5327/002



Material Aluminium
Finish Anodised
Length 312mm
Width 485mm

Retractable Underbody Access Step
5327/101



Material Aluminium
Finish Anodised
Width 550mm
Depth 216mm

Motorised Underbody Access Step
5327/1201*



Voltage 12V
Material Aluminium
Finish Anodised
Width 552mm
Depth 156mm

Folding Access Step
0974/001



Material Mild Steel
Finish Zinc Plated
Length 110mm
Width 94mm
Depth 105mm
Fixings 8mm

Folding Access Step - Large
0974/006



Material Mild Steel
Finish Zinc Plated
Length 188.5mm
Width 178.5mm
Depth 194mm
Fixings 6.5mm

E-Cote Black Folding Step
0979/008



Material Mild Steel
Finish Black E-cote
Length 120mm
Width 108mm
Depth 95mm
Fixings 8.5mm

SWORD PINS / PINS & CHAIN

Sword Pin - Ø9.5 x 63mm
1055/2054



Material Mild Steel
Finish Z/P, Clear Passivated
Tip Finish Stainless Steel
Ring Diameter 32mm
Chain Length 200mm
Pin Diameter 9.5mm
Pin Size 63mm

Sword Pin - Ø12.5 x 88mm
1055/3080



Material Mild Steel
Finish Z/P, Clear Passivated
Tip Finish Stainless Steel
Ring Diameter 39.5mm
Chain Length 200mm
Pin Diameter 12.5mm
Pin Size 88mm

Sword Pin - Ø12.5 x 102mm
1055/3092



Material Mild Steel
Finish Z/P, Clear Passivated
Tip Finish Stainless Steel
Ring Diameter 39.5mm
Chain Length 200mm
Pin Diameter 12.5mm
Pin Size 102mm

Sword Pin - Ø16 x 112mm
1055/4100



Material Mild Steel
Finish Z/P, Clear Passivated
Tip Finish Stainless Steel Tip
Ring Diameter 39.5mm
Chain Length 200mm
Pin Diameter 16mm
Pin Size 112mm

Cotter Pin & Chain 109 x Ø9.5mm
2582/002



Material Mild Steel
Finish Zinc Plated
Cotter Length 109mm
Ring Diameter 32mm
Chain Length 195mm
Pin Diameter 9.5mm

Cotter Pin & Chain 138 x Ø9.5mm
2582/007



Material Mild Steel
Finish Zinc Plated
Cotter Length 138mm
Ring Diameter 40mm
Chain Length 195mm
Pin Diameter 9.5mm

Linch Pin - Ø6 x 45mm
1056/001



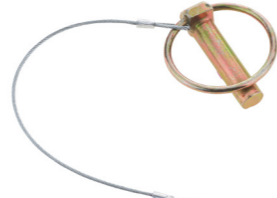
Material Mild Steel
Finish Z/P, Yellow Passivated
Ring Diameter 46mm
Pin Diameter 6mm
Pin Size 45mm

Linch Pin - Ø11 x 44.5mm
1056/003



Material Mild Steel
Finish Z/P, Yellow Passivated
Ring Diameter 52mm
Pin Diameter 11mm
Pin Size 44.5mm

Linch Pin & Wire Tag - Ø8 x 45mm
1056/902



Material Mild Steel
Finish Z/P, Yellow Passivated
Pin Diameter 8mm
Pin Size 45mm
Wire Tag 200mm

TAPE

Conspicuity Tape - Red
4820/501



Finish Red
Type Continuous
Length 50m
Width 50mm
Conforms To ECE 104 Class C
Custom Logo Minimum 10 Rolls

Conspicuity Tape - Amber
4820/502



Finish Amber
Type Continuous
Length 50m
Width 50mm
Conforms To ECE 104 Class C
Custom Logo Minimum 10 Rolls

Conspicuity Tape - White
4820/503



Finish White
Type Continuous
Length 50m
Width 50mm
Conforms To ECE 104 Class C
Custom Logo Minimum 10 Rolls

Anti-Slip Tape - Black
0458/0061



Colour Black
Width 60mm
Roll Length 18m

Rubber Resin Tape
6476/00426



Width 25mm
Thickness 1mm
Roll Length 20m

Double Sided Foam Tape
3233/5025



Width 25mm
Thickness 1.6mm
Roll Length 50m

Non-Abrasive Anti-Slip Tape
0458/001



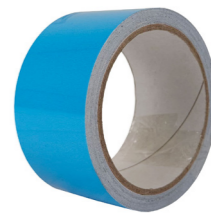
Colour Black
Width 50mm
Roll Length 18.3m

Waterproof Anti-Slip Tape
0458/003



Colour Black
Width 50mm
Roll Length 18.3m

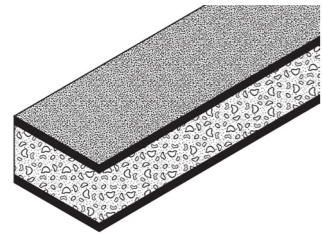
Photoluminescent Tape - Blue
0458/002



Colour Blue
Width 50mm
Length 10m

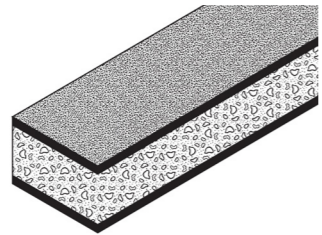
TAPE - SINGLE SIDE FOAM

Sponge Strip - 13 x 6mm
3216/0321



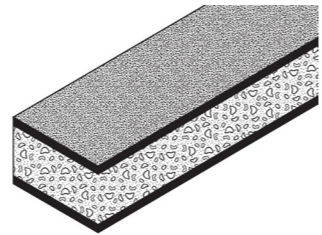
Width 13mm
Thickness 6mm
Roll Length 15m

Sponge Strip - 19 x 3mm
3216/050



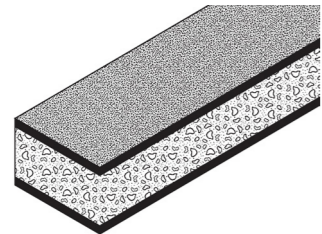
Width 19mm
Thickness 3mm
Roll Length 15m

Sponge Strip - 19 x 6mm
3216/0521



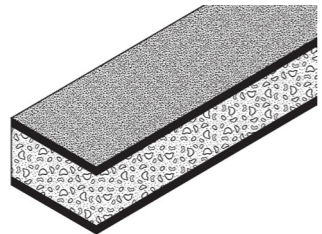
Width 19mm
Thickness 6mm
Roll Length 15m

Sponge Strip - 19 x 13mm
3216/055



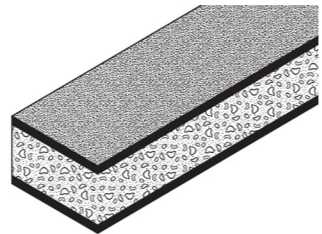
Width 19mm
Thickness 13mm
Roll Length 7m

Sponge Strip - 25 x 3mm
3216/0701



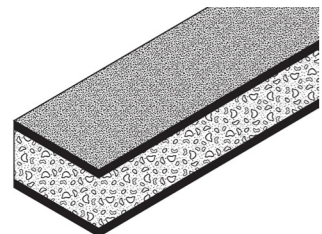
Width 25mm
Thickness 3mm
Roll Length 15m

Sponge Strip - 25 x 6mm
3216/0721



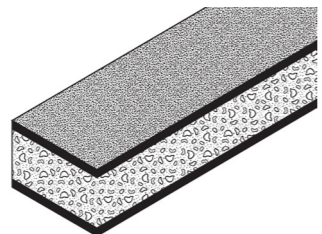
Width 25mm
Thickness 6mm
Roll Length 15m

Sponge Strip - 25 x 25mm
3216/078



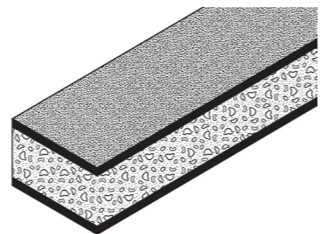
Width 25mm
Thickness 25mm
Roll Length 4m

Sponge Strip - 25 x 13mm
3216/0791



Width 25mm
Thickness 13mm
Roll Length 7m

Sponge Strip - 10 x 6mm
3216/013*



Width 10mm
Thickness 6mm
Roll Length 15m

TRACK & WINDOW

1806 Cargo Track - Z/P
3000/1806



Material Mild Steel
Finish Zinc Plated
Length 3050mm
Width 84mm
Thickness 2.5mm
Diameter 25.4mm
Fixing 6.5mm

1805 Cargo Track - Galvanised
3000/595



Material Pressed Steel
Finish Galvanised
Length 3048mm
Width 67mm
Thickness 1.5mm
Diameter 25mm
Fixing 4mm

Flat Track - Aluminium
3000/605



Material Aluminium
Length 2993mm
Width 50mm
Holes 25mm

Flat Track - Z/P
3000/604



Material Zinc Plated
Length 2993mm
Width 50mm
Holes 25mm

Captive Track - Aluminium
3000/600



Material Aluminium
Length 2997mm
Width 42mm
Holes 9.5mm

Captive Ring
3000/601



To Suit 3000/600

Cargo Track End Piece
3000/602



Colour Silver

Cargo Track End Cap
3000/5961*



Colour Suitable For Grey
1806 Track

Black Window
9911/0894



Material Aluminium
Finish Black
Height 519mm
Width 420mm

VENTILATORS - FIXED

Roof Top Vent - 265mm
0623/001



Material Zinc Die-Cast
Colour Black
Length 265mm
Width 212mm
Depth 30mm

Roof Hatch Vent - 280mm
0638/0023*



Material Moulded Plastic
Colour Cream
Length 280mm
Width 280mm
Depth 78mm

Roof Hatch Vent - 420mm
0638/004



Material Moulded Plastic
Colour Cream
Length 420mm
Width 380mm
Depth 76mm

Roof Hatch Vent Fly Screen
0638/005



Material Moulded Plastic
Colour Cream
Length 336mm
Width 298mm

Horizontal Vent
2548/005S



Material Stainless Steel
Finish Polished
Length 120mm
Height 66mm
Thickness 1mm

Louvre Trickle Vent - 3 Slots
2548/001



Material Aluminium
Colour Self Colour
Length 191mm
Width 135mm
Depth 1mm

Louvre Trickle Vent - 16 Slots
2548/002



Material Aluminium
Colour Self Colour
Length 241mm
Width 166mm
Depth 1mm

Louvre Vent - 5 Slots
2548/016*



Material Stainless Steel
Length 127mm
Width 115mm

Floor Vent
2527/101



Material Polypropylene
Finish White
Length 75mm
Width 75mm
Depth 75mm

VENTILATORS

CentaFlow™ LP Vent - Black
2527/006



Brand CentaFlow™
Material ABS
Colour Black
Width 319mm
Depth 68mm
Roof Thickness 1-21mm

Mushroom Vent - White
2527/020



Colour White
Aperture 110mm
Roof Thickness 25-50mm

Rooftop Duct Vent - White
2527/011



Material ASA Plastic
Colour White
Length 285mm
Width 191mm
Depth 50mm

CentaFlow™ Classic Vent - Black
2527/004



Material ABS Plastic
Colour Black
Length 240mm
Width 240mm
Depth 162mm

CentaFlow™ Vent - White
2527/222



Material ABS Plastic
Colour White
Length 220mm
Width 220mm
Depth 60mm

White Ventilator 12V
2555/30012



Colour White
Voltage 12V
RPM 3500
m3/Hour Capacity 600-650
Closing Mechanism Sold Separately
Also Available 24V, Black & White

Mushroom Vent - Light Grey
2527/030



Colour Light Grey
Voltage 12V

Easy Open Vents
0623/EOVSHPKIT



Material Aluminium
Length 350mm
Width 210mm
Depth 96.5mm

Side Vent
2527/CMC42290KIT



Material ABS Plastic
Height 267mm
Width 246.5mm
Depth 106mm

WINGS, FITMENTS & BODY MOUNTING BRACKETS

Body Mounting Bracket - 0714
6033/0714



Material	Mild Steel
Finish	Black Powder Coated
Length	124mm
Width	61.5mm
Height	57mm
Thickness	5mm
Holes	2 x 11mm
Slot	14 x 28mm

Body Mounting Bracket - 02314
6033/02314



Material	Mild Steel
Finish	Black Powder Coated
Length	94mm
Width	61mm
Height	60mm
Thickness	5.5mm
Holes	2 x 11.5mm
Slot	14 x 28mm

Bearer Bracket - 4040
6033/4040



Material	Mild Steel
Finish	Galvanised
Length	189.5mm
Width	38mm
Height	38mm
Thickness	4mm
Holes	8 x 7mm

Bearer Bracket - 5050
6033/5050



Material	Mild Steel
Finish	Galvanised
Length	190mm
Width	49mm
Height	49mm
Thickness	5mm
Holes	8 x 8.5mm

Cranked Mudguard Wing Stay
3029/7800



Type	Cranked
Length	800mm
Width	34mm

Adjustable Wing Stay Bracket
6688/570515005



Bracket Material	Polyamide 6
Eyelet Material	Acetal
To Suit	34mm Wing Stay

Conventional Mudguards



- Mudguards for every application
- UV stabilised polypropylene copolymer
- Scratch resistant proprietary surface

Size range
• 890 - 1340mm

Spraybuster



- Mudflaps with homologated anti-spray
- Scratch resistant proprietary surface
- Supplied with mounting fasteners

Sizes
• 412 x 780mm
• 508 x 780mm
• 604 x 780mm

Mudflaps



Size Available	• 24" x 18"
• 16" x 12"	• 22" x 16"
• 18" x 12"	• 20" x 18"
• 20" x 12"	• 21" x 18"
• 21" x 12"	• 22" x 18"
• 22" x 12"	• 12" x 12"
• 18" x 16"	• 24" x 12"
• 20" x 16"	• 24" x 16"
• 21" x 16"	• 15" x 18"



SAFE ASSIST

CONCEALED • CABLE-LESS • ADJUSTABLE • RAMP DOOR ASSIST

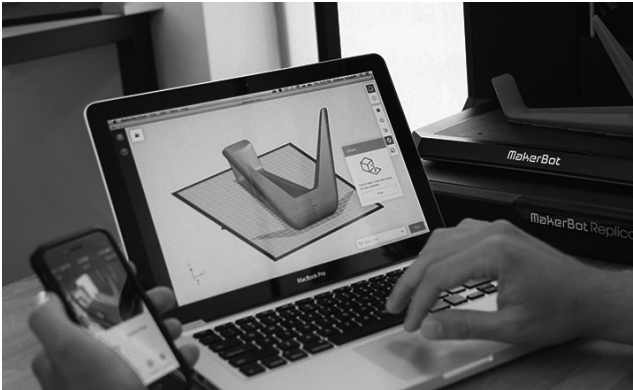
Safe Assist is a new and revolutionary product from Austin Hardware®. The lightweight, heavy-duty ramp door assist eliminates the physical strain of opening and closing heavy ramp doors by rendering the door virtually weightless. All that's required is the strength of a single finger throughout the complete motion.

Key Features

- 100% concealed
- Adjustable
- Constructed of non-corrosive, heavy-duty aluminium
- Lightweight
- Eliminates dangerous cables
- Eliminates the physical strain and danger of a heavy ramp door
- Avoids non-linear weight distribution

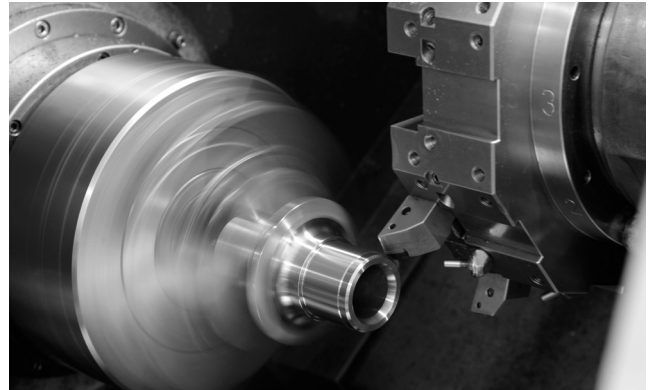
Unlike traditional ramp assists, the revolutionary new Safe Assist is fully concealed to remove the need for dangerous cables that can snap or create a tripping hazard. The heavy duty design, utilises an aluminium exterior for corrosion resistance.

Supply Without Compromise



Design & Rapid Prototyping

To strive to be the best is just part of our ethos at Albert Jagger, we use the latest technologies to aid our designers so that we can develop the next generation of hardware and components. We use rapid prototyping so that we can see our developing designs and improve on them.



Manufacturing

As part of the process to ensure that we supply our customers with flexibility, versatility and diversity we have our own in-house manufacturing department. As the market leaders in our industry, we don't just supply parts, we design and manufacture them too.



ISO 9001 Quality

We at Albert Jagger Limited recognise the need to focus on customer satisfaction and that means not only meeting their expectations but exceeding them. One of our key objectives is to continually strive to improve quality of both product and service. To achieve this we maintain quality management system compliant with ISO 9001: 2015.



Customer Service

Our future depends on the success of our customers that is why we like to take a long term view to building relationships whilst delivering an unrivalled service and inspiring trust and confidence. With 130 years of history, we wouldn't be in the position we are if we hadn't looked after and listened to our customers.

Head Office

Centaur Works, Green Lane,
Walsall, West Midlands,
WS2 8HG. United Kingdom.

Contact

e sales@albertjagger.co.uk
t +44 (0) 1922 471 000

www.albertjagger.co.uk