

| 2023

ORIGINALLY YOURS |  LAGO

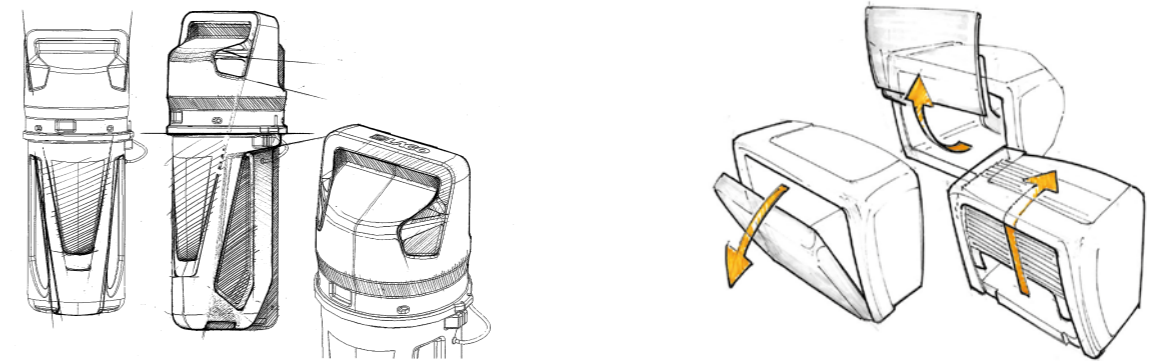
Original. Like a fingerprint, like a signature.
Original. Like a new way to create improvement.
Original. Like the drive for efficiency, even in the simplest things.
Original. Like something akin to us, representing our uniqueness and diversity.
Original. Like beauty, the positive feeling that makes life better. In details too.

Original. To us, it's more than a word.
It's the way we have chosen to do our part, at our best,
in a system where we are all connected.
It's an attitude. It's our commitment.
It's the promise to keep going in our journey with you.

ORIGINALLY YOURS | 

COMPANY

OVER 70 YEARS OF PASSIONATE COMMITMENT TO PROVIDING ORIGINAL, VALUE DRIVEN SOLUTIONS FOR INDUSTRIAL AND COMMERCIAL VEHICLES.



LAGO is a family-owned company, a prominent and respected producer of truck and trailer accessories boasting 60 years of experience in this sector.

Tool and storage boxes, system mudguards, fire extinguisher boxes and other complementary products make up the articulated product offer which stems from such expertise.

Established in Italy and exporting to over 50 countries, LAGO is also known for its solid roots and fair practice.

LAGO is aware of the fact that what distinguishes an organization goes well beyond the quality of products and services offered, hence touching the needs manifested by the entire community. We are firm believers in the principle that fair competition constitutes a healthy incentive to innovation; the work ethics that have always inspired our company are formally assembled in a Code of Conduct in the belief that trust is developed on a day-to-day basis through the respect of people and of the rules that govern the context they operate within.

At LAGO we are true to our core values, without forgetting where it all began, at the longstanding Fontaniva headquarters, in the North-Est of Italy, where it all still takes place.

Moving forward we are constantly seeking better solutions, better efficiency, unique systems and uncharted territory in our product offer.

Our guiding principles lie in safeguarding the interest of our customers by providing high quality, cost-effective "Made in Italy" solutions. Designed solutions which aim at reduction of assembly times, a decrease in part numbers and a safeguarding of overall efficiencies. The ability to give every detail the attention it deserves, yet maintain a firm grip on the overall context of any one given product proposition, has become a fundamental guiding principle in the LAGO corporate philosophy. All products embody the passion of two generations of entrepreneurs; the work of a well-oiled, tight-knit team.

We work for improvement and with passion, we focus on concentrating value where it can truly make a difference.

GROUP



LAGO's projection towards new markets has been strategically supported by the establishment of complementary business entities: AAISTER, LagoGENESIS and LAGO do Brasil.

AAISTER

Nothing is left to chance with AAISTER: our custom made brand for the distribution in Italy. The entire LAGO range matched with complementary products from the best brands provide a comprehensive offering aimed at body shops and accessory retailers. For a consistently first-class service and expert advice, put your trust in those who know the sector inside out! This is a company with distinct commercial and distribution attitudes. Able managers of a complex and fragmented supply chain and a capillary sales network, Aaister is supported by a team of experienced and competent sales agents.

LAGOGENESIS

LagoGENESIS is the laboratory and technological heart of the group with proven experience in the development and production of mechanical and electronic devices and systems dedicated to the protection, control and management of fuel for industrial and commercial vehicles.

Cutting-edge solutions and innovative technologies, focusing on security and inviolability, simplicity and reliability.

LAGO DO BRASIL

LAGO do Brasil is a production and distribution business entity, located in one of the most industrialized areas of Southern Brasil. LAGO do Brasil produces accessories and components for the truck and trailer market which are fully designed and developed in close co-operation with LAGO research and development. The team engineers' solutions focus on the local specific needs, leveraging know how from a long Made in Italy experience.

INDEX



TOOL & STORAGE BOXES

PAGE 08

BLACK DOG
VERTIGO
KOMPOS-IT
MOTHER TRUCKER

ORIGIN
DAY TRIPPIN'
TOOL BOXES ACCESSORIES

PACKAGING DETAILS

PAGE 70-71-72

WATER TANKS

PAGE 20

TANKY
TANKYTOO

PACKAGING DETAILS

PAGE 73

MUDGUARDS

PAGE 24

KOMPLEET KOMBI
KOMPLEET KOMBI TIPPER
PORTTER KOMBI
KOMPLEET
KOMPLEET KOMMA
WHEELMATE
WHEELMATE PRO

WHEELMATE PRO KOMPLEET
SPRAY BUSTER
QWIKLOK
BRACKETS AND FASTENING OPTIONS
ROCK'N'ROAD
INTERFLEX

PACKAGING DETAILS

PAGE 74-75-76

SAFETY & HYGIENE

PAGE 42

SHELLY
FITEASY
RELEASEY
FOLPY

SLYKÒN
GRABBY
BIO KIT CASE
BIO KIT CABINET

PACKAGING DETAILS

PAGE 77-78

SPECIAL CARRIERS

PAGE 52

HOLDYX - ROLLYX
FORMEEGA

PORTTER UNIVERSAL
HOSE PROTEX

PROTECTION DEVICES

PAGE 58

SOPÉO
MINI SOPÉO 13-14
LAGOMAX

SEENA 2.0
SIDE BASIC SET

PACKAGING DETAILS

PAGE 78

TOOL & STORAGE BOXES

WATER TANKS

MUDGUARDS

SAFETY & HYGIENE

SPECIAL CARRIERS

PROTECTION DEVICES



TOOL & STORAGE BOXES

BLACK DOG

TOOL & STORAGE BOXES

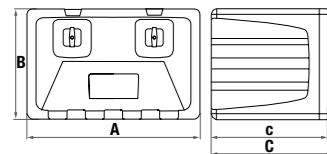


UV stabilized polyethylene

Colour: black and red (UV stabilized)

Form and function - Impact and shock resistance without compromise
 11 different sizes
 Water and dust resistant gasket seal
 Heavy duty polypropylene multi-wall base panel
 Conventional opening with 2 handles (1 handle for sizes 400 and 500) - Keys, spare keys and keyhole caps included

Can be used as side protection device according to regulation ECE 73R01
 further details under download section www.lagoaccessori.it



Code	A	B	c-C	kg	capacity (liters)	max load (kg)*	std packaging**
44 50 55 115	400	350	400-420	5,7	40	30	30 pcs
44 50 55 103	500	350	400-420	6,2	46	35	32 pcs
44 50 55 083	600	450	470-490	9,2	90	50	24 pcs
44 50 55 081	600	450	650-670	10,5	140	60	16 pcs
44 50 55 084	600	550	650-670	11,5	164	65	16 pcs
44 50 55 060	700	450	470-490	10,5	108	55	18 pcs
44 50 55 053	700	450	650-670	12	140	65	12 pcs
44 50 55 040	750	360	330-350	7,8	55	40	27 pcs
44 50 55 033	800	450	470-490	11,5	123	60	18 pcs
44 50 55 020	1000	500	470-490	15	180	70	12 pcs
44 50 55 017	1000	500	650-670	18	260	75	8 pcs

*Indicated value is the maximum suggested distributed load using the dedicated LAGO support brackets

**Further details page 70



BLACK DOG CUSTOMISATION
 Plastic laminated reflective adhesive label
 Four colour process print
 Label dimension: 190x80mm

all dimensions are in mm

BRACKETS, ACCESSORIES AND SPARE PARTS DETAILS AT PAGES 17-18

VERTIGO

TOOL & STORAGE BOXES

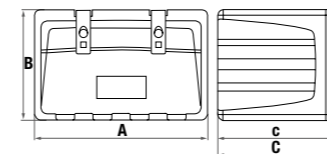


UV stabilized polyethylene

Colour: black and grey (UV stabilized)

Form and function - Impact and shock resistance without compromise
 11 different sizes
 Water and dust resistant gasket seal
 Heavy duty polypropylene multi-wall base panel
 Exclusive double release lever locking system with "M.L.D." magnetic device (1 locking lever for sizes 400 and 500) keys
 Spare keys and keyhole caps included

Can be used as side protection device according to regulation ECE 73R01
 further details under download section www.lagoaccessori.it



Code	A	B	c-C	kg	capacity (liters)	max load (kg)*	std packaging**
44 50 25 115	400	350	400-420	5,7	40	30	30 pcs
44 50 25 103	500	350	400-420	6,2	46	35	32 pcs
44 50 25 083	600	450	470-490	9,2	90	50	24 pcs
44 50 25 081	600	450	650-670	10,5	140	60	16 pcs
44 50 25 084	600	550	650-670	11,5	164	65	16 pcs
44 50 25 060	700	450	470-490	10,5	108	55	18 pcs
44 50 25 053	700	450	650-670	12	140	65	12 pcs
44 50 25 040	750	360	330-350	7,8	55	40	27 pcs
44 50 25 033	800	450	470-490	11,5	123	60	18 pcs
44 50 25 020	1000	500	470-490	15	180	70	12 pcs
44 50 25 017	1000	500	650-670	18	260	75	8 pcs

*Indicated value is the maximum suggested distributed load using the dedicated LAGO support brackets

**Further details page 70



VERTIGO CUSTOMISATION
 Plastic laminated reflective adhesive label
 Four colour process print
 Label dimension: 190x80mm

all dimensions are in mm

BRACKETS, ACCESSORIES AND SPARE PARTS DETAILS AT PAGES 17-18

KOMPOS-IT

INTEGRATED SYSTEM OF MULTI-PURPOSE
MODULAR TOOL & STORAGE BOXES



60% VOLUME REDUCTION



Copolymer Polypropylene Compounded

Colour: black (UV stabilized)

HIGH STORAGE VOLUME

VERSATILE: a vast choice of options yields configurations which are suited to transportation of ADR and load security equipment, tools and more.

COMFORT: thanks to the dedicated isothermal module, it's possible to set up a traveling kitchen.

Six basic elements to be easily and quickly assembled by means of simple interlocking snaps

60% volume reduction (transport and stock)

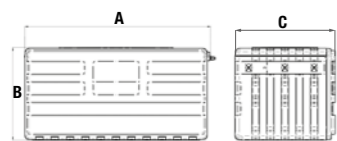
Each single module is specifically designed for its function in the assembly:

- the bottom module is well structured for loading
- the lateral parts are well structured to bear the brackets

Fully integrated lid

Manual opening equipped of key lock and lock cover

Kompos-it is lab and road tested with 60 kg distributed load using dedicated mounting hardware produced on specification by LAGO. Use of such dedicated mounting hardware is compulsory to ensure optimum product performance.



Code	Description	A	B	C	kg	max load (kg)*	std packaging**
80 60 62 115.0100	KIT KOMPOS-IT manual opening doorstop chain set installed	1200	600	650	25	60	12 pcs
80 60 62 095.0100	KIT KOMPOS-IT manual opening doorstop chain set installed	1000	600	650	20	50	12 pcs

*Indicated value is the maximum suggested distributed load using the dedicated LAGO support brackets

**Further details page 70

AVAILABLE OPTIONS

Isothermal unit: strong isothermal unit equipped with its own lid can be opened independently to optimize efficiency. Provided in kit form to reduce volume during transport. Can be used as stand alone unit designed for use with standard ice packs.

- Platform and chassis mounting bracket kit
- Vertical and horizontal dividers
- Worktop applicable on the inner side of the door
- Drawers
- Led lighting

all dimensions are in mm

SUPPORT BRACKET KITS



Code	Description	kg	std packaging
31 16 67 004	Platform mounting bracket kit (pair)	8	1 pc
31 16 66 004	Chassis mounting bracket kit (pair)	10	1 pc



SPARE PARTS AND ACCESSORIES



Code	Description	kg	std packaging
07 09 16 001	Isothermal box 400 x 600 x 650 mm (dis-assembled) FOR ISOTHERMAL UNIT INSTALLATION VERTICAL DIVIDER IS NECESSARY	0,3	1 pc
81 60 40 044	Vertical divider 600 x 650 mm	1,1	12 pcs
81 60 41 021	Horizontal divider 400 x 650 mm	0,5	12 pcs
81 60 41 007	Horizontal divider 200 x 650 mm	0,3	24 pcs
81 30 45 072	Aluminium worktop 1200 x 600 mm	1,8	bulk
81 30 45 063	Aluminium worktop 1000 x 600 mm	1,6	bulk
81 60 56 006	Drawer (equipped with standard guides) FOR DRAWER INSTALLATION HORIZONTAL DIVIDER IS NECESSARY	1	12 pcs
05 09 16 026	Led light	0,1	bulk
07 10 16 001	Doorstop chain set	0,2	bulk
07 05 16 002	Locking kit	0,05	bulk

all dimensions are in mm

MOTHER TRUCKER

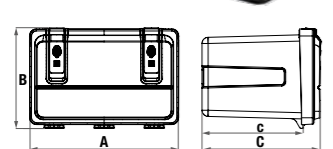
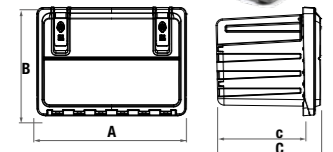
TOOL BOXES



UV stabilized polypropylene copolymer

Colour: black (UV stabilized)

Scratch resistant proprietary surface
 Enveloping door with lever locking system: double release system with MLD magnetic device - more security and reliability
 Reinforcement ribs for impact and shock resistance
 Transport and logistics optimization: can be delivered fully assembled or as separate nested parts, assembly of parts is easy and no tools are required
 Can be used as side protection device according to regulation ECE 73R01
 further details under download section www.lagoaccessori.it



Fully assembled

Code	A	B	C-c	figure	kg	capacity (liters)	max load (kg)*	std packaging**
44 60 62 116	400	350	300-375	B	3,3	30	30	40 pcs
44 60 62 100	500	350	380-455	B	3,8	46	35	40 pcs
44 60 62 090	600	400	400-475	B	5,7	70	45	30 pcs
44 60 62 045	690	500	400-480	A	6,8	98	50	20 pcs
44 60 62 030	800	500	400-475	B	8,2	126	55	18 pcs
44 60 62 020	1000	500	400-480	A	9,7	148	70	15 pcs

Nested bodies and separate lids

Code	A	B	C-c	figure	kg	capacity (liters)	max load (kg)*	std packaging**
44 60 63 116	400	350	300-375	B	3,3	30	30	50 pcs
44 60 63 100	500	350	380-455	B	3,8	46	35	64 pcs
44 60 63 090	600	400	400-475	B	5,7	70	45	36 pcs
44 60 63 045	690	500	400-480	A	6,8	98	50	30 pcs
44 60 63 030	800	500	400-475	B	8,2	126	55	28 pcs
44 60 63 020	1000	500	400-480	A	9,7	148	70	24 pcs

*Indicated value is the maximum suggested distributed load using the dedicated LAGO support brackets

**Further details page 71

MOTHER TRUCKER CUSTOMISATION

Silk screen printing, one or more colours, according to quantities
 Logo maximum dimension according to toolbox/printing size

BRACKETS, ACCESSORIES AND SPARE PARTS DETAILS AT PAGES 17-18

all dimensions are in mm

ORIGIN

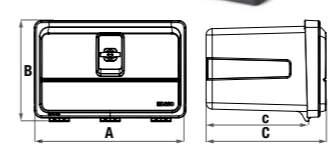
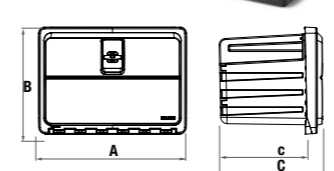
TOOL BOXES



UV stabilized polypropylene copolymer

Colour: black (UV stabilized)

Scratch resistant proprietary surface
 For logistic requirements can be delivered fully assembled or as separate nested parts
 Water and dust resistant gasket seal
 Reinforcement ribs for impact and shock resistance
 Equipped with multipoint locking system for increased security - 1 or 2 handles - Key, spare key and keyhole cap included
 Can be used as side protection device according to regulation ECE 73R01
 further details under download section www.lagoaccessori.it



Fully assembled

Code	A	B	C-c	figure	kg	capacity (liters)	max load (kg)*	std packaging**
44 60 64 116	400	350	300-375	B	3,3	30	30	40 pcs
44 60 64 100	500	350	380-455	B	3,8	46	35	40 pcs
44 60 64 090	600	400	400-475	B	5,7	70	45	30 pcs
44 60 64 045	690	500	400-480	A	6,8	98	50	20 pcs
44 60 64 030	800	500	400-475	B	8,2	126	55	18 pcs
44 60 64 020	1000	500	400-480	A	9,7	148	70	15 pcs

Nested bodies and separate lids

Code	A	B	C-c	figure	kg	capacity (liters)	max load (kg)*	std packaging**
44 60 69 116	400	350	300-375	B	3,3	30	30	50 pcs
44 60 69 100	500	350	380-455	B	3,8	46	35	64 pcs
44 60 69 090	600	400	400-475	B	5,7	70	45	30 pcs
44 60 69 045	690	500	400-480	A	6,8	98	50	30 pcs
44 60 69 030	800	500	400-475	B	8,2	126	55	28 pcs
44 60 69 020	1000	500	400-480	A	9,7	148	70	24 pcs

*Indicated value is the maximum suggested distributed load using the dedicated LAGO support brackets

**Further details page 71

ORIGIN CUSTOMISATION

Silk screen printing, one or more colours, according to quantities
 Logo maximum dimension according to toolbox/printing size

BRACKETS, ACCESSORIES AND SPARE PARTS DETAILS AT PAGES 17-18

all dimensions are in mm

DAY TRIPPIN'

TOOL BOXES



UV stabilized polypropylene copolymer

Colour: black (UV stabilized)

Scratch resistant proprietary surface
 Enveloping door, no water or dust introduction
 Traditional horizontal mounting (top or low opening), vertical (right or left opening) or standing (door top opening)
 Reinforcement ribs for impact and shock resistance
 Quick opening and closing system without handles
 Can be equipped with 2 padlocks or with LAGO key-locking system (with or without key)
 Transport and logistics optimization: can be delivered fully assembled or as separate nested parts, assembly of parts is easy and no tools are required
 Can be used as side protection device according to regulation ECE 73R01
 further details under download section www.lagoaccessori.it

Fully assembled

Code	A	B	C-c	figure	kg	capacity (liters)	max load (kg)*	std packaging**
44 60 60 116	400	350	300-350	B	2,8	30	30	40 pcs
44 60 60 100	500	350	380-450	B	3,4	46	35	40 pcs
44 60 60 090	600	400	400-470	B	4,9	70	45	30 pcs
44 60 60 045	690	500	400-470	A	5,9	98	50	20 pcs
44 60 60 030	800	500	400-470	B	6,4	126	55	18 pcs
44 60 60 020	1000	500	400-470	A	8,8	148	70	15 pcs

Nested bodies and separate lids

Code	A	B	C-c	figure	kg	capacity (liters)	max load (kg)*	std packaging**
44 60 61 116	400	350	300-350	B	2,8	30	30	64 pcs
44 60 61 100	500	350	380-450	B	3,4	46	35	64 pcs
44 60 61 090	600	400	400-470	B	4,9	70	45	36 pcs
44 60 61 045	690	500	400-470	A	5,9	98	50	30 pcs
44 60 61 030	800	500	400-470	B	6,4	126	55	28 pcs
44 60 61 020	1000	500	400-470	A	8,8	148	70	24 pcs

*Indicated value is the maximum suggested distributed load using the dedicated LAGO support brackets

**Further details page 72

DAY TRIPPIN' CUSTOMISATION

Silk screen printing, one or more colours, according to quantities
 Logo maximum dimension according to toolbox/printing size

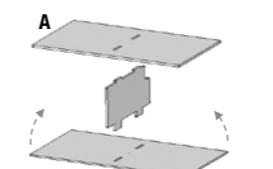
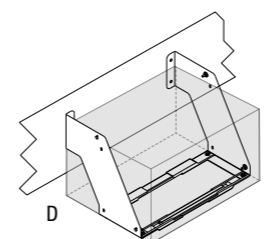
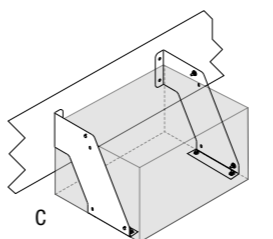
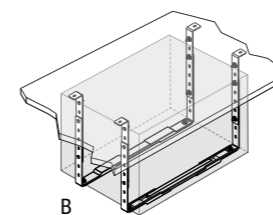
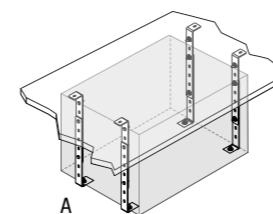
BRACKETS, ACCESSORIES AND SPARE PARTS DETAILS AT PAGES 17-18

all dimensions are in mm

SUPPORT BRACKET KITS

The use of dedicated LAGO mounting hardware and brackets is suggested to ensure optimum product performance
 All support bracket kits are supplied with necessary hardware for tool box/brackets fastening

Steel S235JR



PLATFORM support bracket kits for Black Dog and Vertigo

Code	description	thickness	kg	fig.	std packaging
31 16 41 000	400/500mm - adjustable height (only lateral brackets)	3	2,7	A	1 pc
31 16 43 030	600mm - adjustable height	3	4,2	B	1 pc
31 16 43 040	700mm - adjustable height	3	5,4	B	1 pc
31 16 43 045	750mm - adjustable height	3	5	B	1 pc
31 16 43 050	800mm - adjustable height	3	5,6	B	1 pc
31 16 43 060	1000mm - adjustable height	3	6	B	1 pc

PLATFORM support bracket kits for Mother Trucker, Origin and Day Trippin'

Code	description	thickness	kg	fig.	std packaging
31 16 41 000	400/500mm - adjustable height (only lateral brackets)	3	2,7	A	1 pc
31 16 42 030	600mm - adjustable height	3	5	B	1 pc
31 16 69 040	700mm - adjustable height	3	5,4	B	1 pc
31 16 42 050	800mm - adjustable height	3	5,7	B	1 pc
31 16 69 060	1000mm - adjustable height	3	6	B	1 pc

CHASSIS support bracket kits for Black Dog and Vertigo

Code	description	thickness	kg	fig.	std packaging
31 16 32 000	400/500mm (only lateral brackets)	3	4,65	C	1 pc
31 16 34 030	600x470mm	3	9,7	D	1 pc
31 16 34 035	600x650mm	4	13,8	D	1 pc
31 16 34 037	600x550x650mm	4	15,8	D	1 pc
31 16 34 040	700mm	3	9,9	D	1 pc
31 16 34 043	700x650mm	4	13,8	D	1 pc
31 16 34 045	750mm	3	11	D	1 pc
31 16 34 050	800mm	3	10	D	1 pc
31 16 34 060	1000mm	3	10	D	1 pc
31 16 34 065	1000x650mm	4	16,8	D	1 pc

CHASSIS support bracket kits for Mother Trucker, Origin and Day Trippin'

Code	description	thickness	kg	fig.	std packaging
31 16 32 000	400/500mm (only lateral brackets)	3	4,65	C	1 pc
31 16 33 030	600mm	3	7,6	D	1 pc
31 16 68 040	700mm	3	8,2	D	1 pc
31 16 33 050	800mm	3	8,2	D	1 pc
31 16 68 060	1000mm	3	10	D	1 pc



DIVIDEA

DIVIDEA, Polypropylene shelves and organizers for Black Dog and Vertigo

Code	description	kg	fig.	std packaging
31 57 51 001	suitable for tool box 44 50 25 083	1.1	A	6 pcs
31 57 51 002	suitable for tool box 44 50 25 060	1.3	A	6 pcs
31 57 51 003	suitable for tool box 44 50 25 033	1.5	A	6 pcs
31 57 51 004	suitable for tool box 44 50 25 020	1.7	A	6 pcs

all dimensions are in mm

SPARE PARTS AND ACCESSORIES



Code	description	std packaging
05 09 04 024	Black Dog handle kit BD060 key, spare key, key hole cap and screw kit included	bulk



05 09 04 042	Origin handle kit BD060 key, spare key, key hole cap and screw kit included	bulk
--------------	--	------



07 50 08 001	Vertigo handle kit VT040 key, spare key, key hole cap and screw kit included	bulk
--------------	---	------



07 50 08 011	Mother Trucker handle kit VT040 key, spare key, key hole cap and screw kit included	bulk
--------------	--	------



07 00 08 008	Doorstop kit (L. 410) Mother Trucker - Origin - Day Trippin' 500-600	bulk
--------------	---	------

07 00 08 007	Doorstop kit (L. 410) Mother Trucker - Origin - Day Trippin' 700-1000	bulk
--------------	--	------

07 00 08 009	Doorstop kit (L. 610) Mother Trucker - Origin - Day Trippin' 800	bulk
--------------	---	------



05 57 08 022	Inner flat loading panel (also suitable for lid) Mother Trucker - Origin - Day Trippin' 700	bulk
--------------	--	------

05 57 08 023	Inner flat loading panel (also suitable for lid) Mother Trucker - Origin - Day Trippin' 1000	bulk
--------------	---	------



07 61 08 001	Day Trippin' locking kit (pair) with key	6 pcs
--------------	--	-------



07 61 08 002	Day Trippin' locking kit (pair) without key	6 pcs
--------------	---	-------

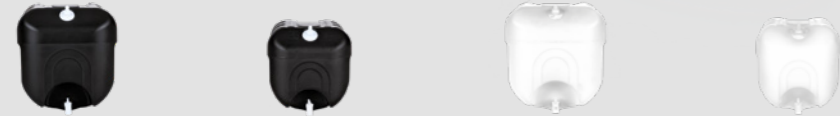
all dimensions are in mm



WATER TANKS

TANKY

HAND WASH WATER TANK



UV stabilized polyethylene

Colour: black, white (UV stabilized)
not suitable for food stuff

Strong and handy
All tanks pressure tested
Threaded 250ml soap pump - Dispenser and tap included
Necessary hardware for Tanky/bracket fastening included

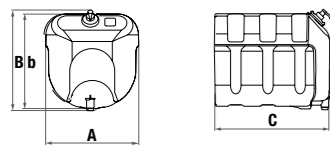
Tanky 30

Code	capacity (liters)	colour	A	b-B	C	kg	std packaging*
52 55 15 010	28	white	350	360-380	430	3	60 pcs
52 50 15 030	28	black	350	360-380	430	3	60 pcs

Tanky 50

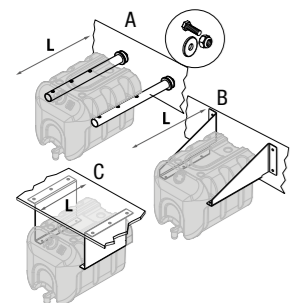
Code	capacity (liters)	colour	A	b-B	C	kg	std packaging*
52 55 15 050	45	white	420	430-450	450	5,2	45 pcs
52 50 15 050	45	black	420	430-450	450	5,2	45 pcs

*Further details page 73



SUPPORT BRACKET KITS

Code	description	L	fig.	std packaging
31 16 28 001	Chassis mounting flanged tubes - Chassis mounting hardware supplies - Tanky/Tankytoo 30 and 50	466	A	multiple of 5
31 16 26 001	Chassis mounting fitting brackets - Tanky/Tankytoo 30 and 50	385	B	multiple of 5
31 16 25 001	Platform mounting fitting brackets - Tanky/Tankytoo 30 and 50	288	C	multiple of 5



SPARE PARTS

Code	description	fig.	std packaging
05 09 02 008	Soap dispenser kit (with tank)	A	bulk
05 09 02 009	Water tap	B	bulk
05 09 02 005	Tank cap (alternative to soap dispenser kit)	C	bulk



all dimensions are in mm

TANKYTOO

HAND WASH WATER TANK



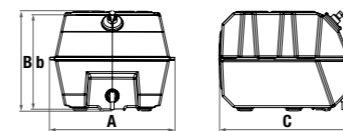
UV stabilized polyethylene

Colour: black (UV stabilized)
not suitable for food stuff

Modern and handy
Threaded 250ml soap pump - Dispenser and tap included
Necessary hardware for Tankytoo/bracket fastening included

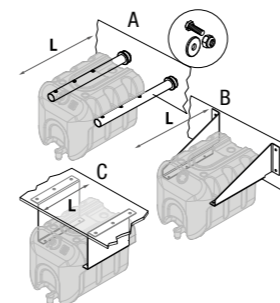
Code	capacity (liters)	colour	A	b-B	C	kg	std packaging*
52 50 30 010	28	black	382	283	400	2,2	42 pcs

*Further details page 73



SUPPORT BRACKET KITS

Code	description	profondità	fig.	std packaging
31 16 28 001	Chassis mounting flanged tubes - Chassis mounting hardware supplies - Tanky/Tankytoo 30 and 50	466	A	multiple of 5
31 16 26 001	Chassis mounting fitting brackets - Tanky/Tankytoo 30 and 50	385	B	multiple of 5
31 16 25 001	Platform mounting fitting brackets - Tanky/Tankytoo 30 and 50	288	C	multiple of 5



SPARE PARTS

Code	description	fig.	std packaging
05 09 02 008	Soap dispenser kit (with tank)	A	bulk
05 09 02 056	Water tap	B	bulk
05 09 02 005	Tank cap (alternative to soap dispenser kit)	C	bulk



all dimensions are in mm



MUDGUARDS

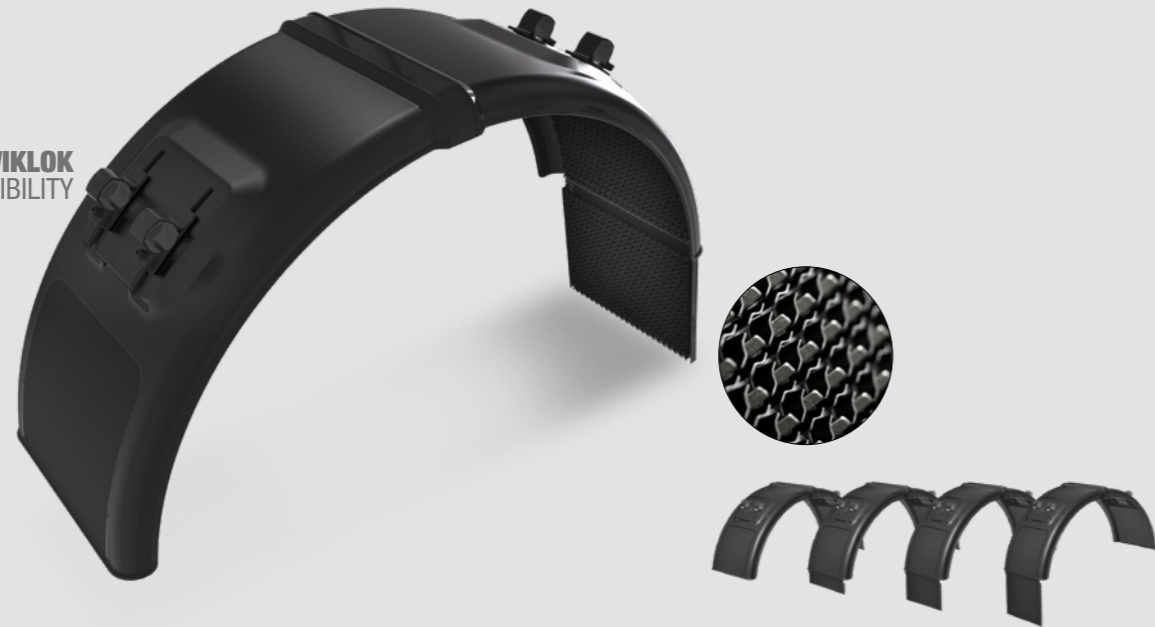
KOMPLEET KOMBI

MODULAR MUDGUARD WITH INTEGRATED MUDFLAP, ANTISPRAY AND ADJUSTABLE BRACKETS

INTEGRATED SOLUTION
ANTI-SPRAY | MUDFLAP | ADJUSTABLE BRACKETS



QWIKLOK
COMPATIBILITY



UV stabilized polypropylene copolymer

Colour: black and grey (UV stabilized)

Values on all fronts

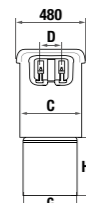
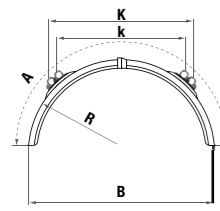
4 different modules: Kombi Basic, Kombi 150, Kombi 250 and Kombi 350
50 / 75% less packed volume - Save on logistics, handling and storage
Simple assembly

No preliminary drilling, riveting, gluing or fastening operation
Substantial weight reduction through part integration
Scratch resistant proprietary surface

Adjustable Ø42 mm fixing eyelet - Max torque 12Nm
Qwiklow versions available upon request

Eyelet clamping fasteners Geomet® surface treated - Extra corrosion resistant - Absence of other ferrous parts

Approved anti-spray device according to regulation 109/2011÷2015/166
further details under download section www.lagoaccessori.it



ASSEMBLED PRODUCT

Description	A	B	C-c	R	K	k	D	H mudflap
Kompleet Kombi without mudflap	1890	1290	450-390	640	925	803	150	-
Kompleet Kombi 150 - integrated mudflap 150mm	1890	1290	450-390	640	925	803	150	150
Kompleet Kombi 250 - integrated mudflap 250mm	1890	1290	450-390	640	925	803	150	250
Kompleet Kombi 350 - integrated mudflap 350mm	1890	1290	450-390	640	925	803	150	350

all dimensions are in mm

Compose your Kompleet Kombi combining the modules - All modules shipped dis-assembled

Kompleet Kombi Basic = ① 15 60 45 010 + ① 15 60 45 010			
Code		kg	std packaging*
① 15 60 45 010		2	18 pcs
① 15 60 45 010		2	18 pcs
Kompleet Kombi 150 = ① 15 60 45 010 + ② 15 60 45 015			
Code		kg	std packaging*
① 15 60 45 010		2	18 pcs
② 15 60 45 015		2,25	18 pcs
Kompleet Kombi 250 = ① 15 60 45 010 + ③ 15 60 45 020			
Code		kg	std packaging*
① 15 60 45 010		2	18 pcs
③ 15 60 45 020		2,45	18 pcs
Kompleet Kombi 350 = ① 15 60 45 010 + ④ 15 60 45 025			
Code		kg	std packaging*
① 15 60 45 010		2	18 pcs
④ 15 60 45 025		2,65	18 pcs

*Further details page 74



MUDFLAP CUSTOMISATION

Silk screen printing
Minimum order quantity required
Maximum area for printing 330x190mm
Nr. of colours to be evaluated

all dimensions are in mm

ACCESSORIES AND SPARE PARTS AT PAGES 36-37-38

KOMPLEET KOMBI TIPPER

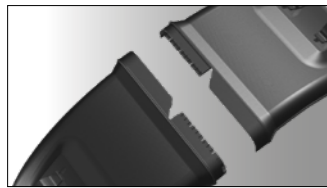
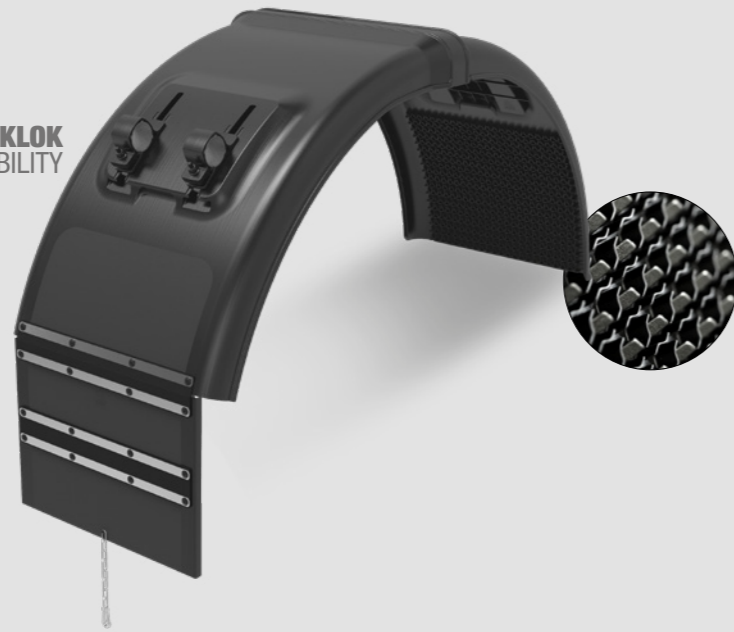
MODULAR MUDGUARD WITH INTEGRATED FOLDABLE MUDFLAP

INTEGRATED SOLUTION
ANTI-SPRAY | MUDFLAP | ADJUSTABLE BRACKETS

TIPPER
SPECIAL



QWIKLOK
COMPATIBILITY



UV stabilized polypropylene copolymer

Colour: black (UV stabilized)

Dedicated solution for tipper trailers: ready for mounting mudguard with foldable mudflap, chain, carabiner for fixing to mudguards' pipes or rear bumpers

50 / 75% less packed volume - Save on logistics, handling and storage

Simple assembly - No tools required

No preliminary drilling, riveting, gluing or fastening operation

Substantial weight reduction through part integration

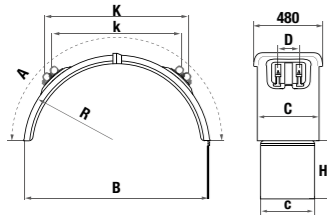
Scratch resistant proprietary surface

Adjustable Ø 42mm fixing eyelet - Max torque 12Nm

Qwiklok versions available upon request

Eyelet clamping fasteners Geomet® surface treated - Extra corrosion resistant

Chain, carabiner, carabiner fixing eyelet, plates: stainless steel



ASSEMBLED PRODUCT

Description	A	B	C-c	R	K	k	D	H
Komplet Kombi Tipper	1800	1290	450-390	640	925	803	150	300



Komplet Kombi Tipper = ① 15 60 45 010 + ⑤ 15 60 46 001

Code	kg	std packaging*
① 15 60 45 010	2	18 pcs
⑤ 15 60 46 001	2,8	18 pcs

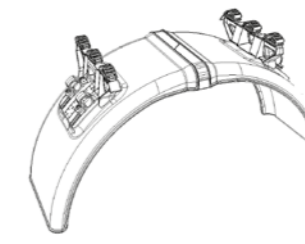
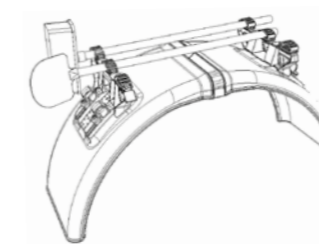
*Further details page 74

all dimensions are in mm

ACCESSORIES AND SPARE PARTS AT PAGES 36-37-38

PORTTER KOMBI

BROOM, SHOVEL AND LADDER HOLDER



PA6 GF + rubber

Colour: Black

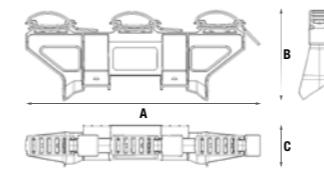
Lighter, Faster, Better

Simple and fast assembly

Substantial weight reduction

Necessary hardware for fastening to mudguard included

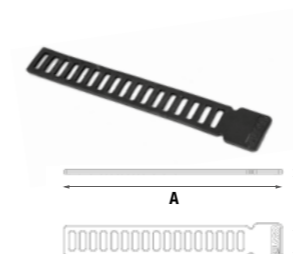
Extra corrosion resistant



Portter Kombi

Code	A	B	C	Kg	std packaging
72 60 40 002*	425	170	80	0,66	4 pcs

*3 rubber fasteners (050702049) included



Spare parts - Rubber Porter fastener

Code	A	B	C	Kg	std packaging
05 07 02 049	290	5	45	0,05	12 pcs

all dimensions are in mm

ACCESSORIES AND SPARE PARTS AT PAGES 37-38

KOMPLEET

INTEGRATED MUDFLAP,
ANTI-SPRAY AND ADJUSTABLE BRACKETS

INTEGRATED SOLUTION
ANTI-SPRAY | MUDFLAP | ADJUSTABLE BRACKETS

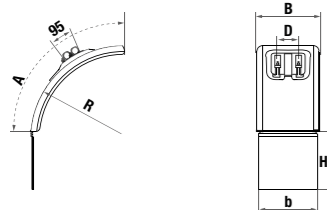


UV stabilized polypropylene copolymer

Colour: black (UV stabilized)

- Fully integrated system - Increased reliability and quicker mounting
- Simple assembly
- No preliminary drilling, riveting, gluing or fastening operation
- Substantial weight reduction through part integration
- Scratch resistant proprietary surface
- Adjustable Ø42 mm fixing eyelet - Max torque 12Nm
- Qwiklok versions available upon request
- Eyelet clamping fasteners Geomet® surface treated - Extra corrosion resistant - Absence of other ferrous parts

Approved anti-spray device according to regulation 109/2011-2015/166
further details under download section www.lagoaccessori.it



Code	A	B-b	R	D	H mudflap	kg	std packaging*
15 60 01 008	700	450-390	670	150	-	1,78	48 pcs
15 60 10 170	700	450-390	670	150	160	2,75	42 pcs
15 60 11 170	700	450-390	670	150	250	3	30 pcs
15 60 12 170	700	450-390	670	150	350	3,5	30 pcs
15 60 09 170	700	450-390	670	150	300	3	30 pcs

*Further details page 74



MUDFLAP CUSTOMISATION

- Silk screen printing
- Minimum order quantity required
- Maximum area for printing 330x190mm
- Nr. of colours to be evaluated

all dimensions are in mm

ACCESSORIES AND SPARE PARTS AT PAGES 36-37-38

KOMPLEET KOMMA

VERTICAL MUDGUARDS, INTEGRATED MUDFLAP
AND ANTISPRAY DEVICE

INTEGRATED SOLUTION
ANTI-SPRAY | MUDFLAP | ADJUSTABLE BRACKETS

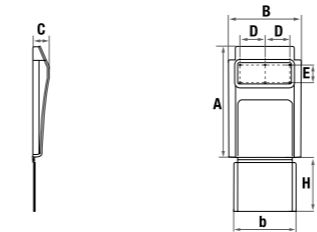


UV stabilized polypropylene copolymer

Colour: black (UV stabilized)

- Fully integrated semi-trailer mudguard - Quicker mounting and lateral mudflap ready
- No preliminary drilling, riveting, gluing or fastening necessary
- Scratch resistant proprietary surface
- Extra corrosion resistant - Absence of ferrous parts
- Integrated wind proof hinge
- Integrated mounting holes

Approved anti-spray device according to regulation 109/2011-2015/166
further details under download section www.lagoaccessori.it



Code	A	B-b	C	D	E	H mudflap	kg	std packaging*
15 60 40 010	735	470-410	110	165	116	-	1,8	20 pcs
15 60 40 015	735	470-410	110	165	116	155	2	18 pcs
15 60 40 018	735	470-410	110	165	116	190	2,2	18 pcs
15 60 40 020	735	470-410	110	165	116	265	2,3	18 pcs
15 60 40 025	735	470-410	110	165	116	350	2,4	18 pcs
15 60 39 025	620	480-410	110	165	116	290	3,0	18 pcs

*Further details page 74



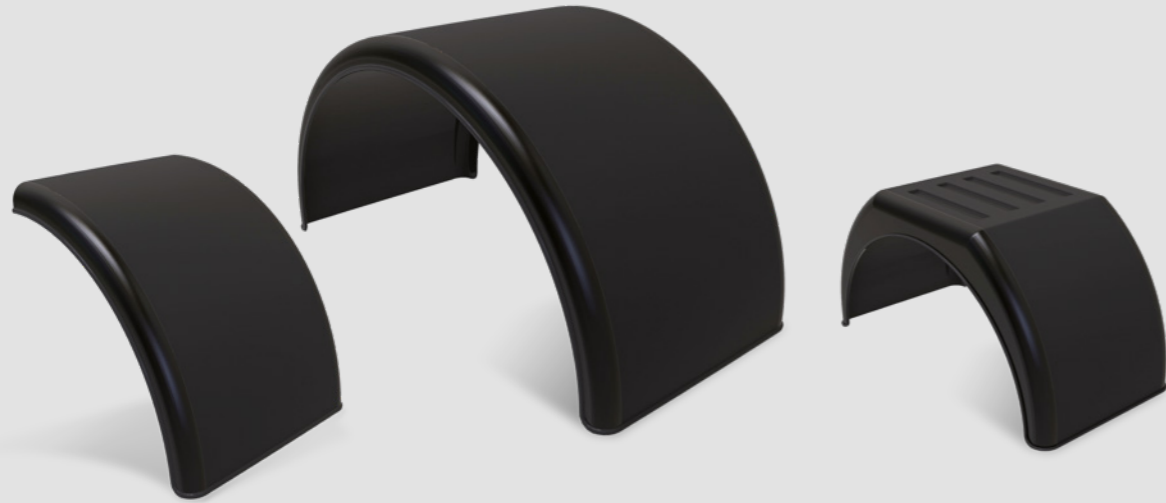
MUDFLAP CUSTOMISATION

- Silk screen printing
- Minimum order quantity required
- Maximum area for printing 330x190mm
- Nr. of colours to be evaluated

all dimensions are in mm

WHEELMATE

CONVENTIONAL MUDGUARDS



UV stabilized polypropylene copolymer

Colour: black (UV stabilized)

A mudguard for every application
Scratch resistant proprietary surface

Conventional mudguards

Code	A	B	C	H	P	R	kg	std packaging*
11 60 41 380	2100	1340	660	670		670	6,1	42 pcs
11 60 41 410	2100	1350	440	670		670	4,2	60 pcs
11 60 41 465	1900	1330	660	570		670	5,8	42 pcs
11 60 41 460	1920	1310	450	600		650	3,5	60 pcs
11 60 41 505	1700	1100	560	540		550	3,5	50 pcs
11 60 41 535	1580	1000	550	510		500	3	60 pcs
11 60 41 540	1580	1000	500	500		500	2,8	80 pcs
11 60 41 640	1400	900	450	450		450	2,3	80 pcs
11 60 41 655	1380	890	400	440		440	2	100 pcs
11 60 41 645	1400	900	225	450		450	1,2	10 pcs
11 60 41 660	1400	900	270	450		450	1,5	10 pcs

Flat top mudguards

11 60 42 610	1470	910	460	460	390	500	2,6	80 pcs
11 60 42 600	1500	900	310	480	400	600	2,4	90 pcs

Quarter mudguards

11 60 40 080	1000	-	660	-		670	3	24 pcs
11 60 40 095	1000	-	440	-		670	2	24 pcs
11 60 40 130	800	-	670	-		670	2,1	50 pcs
11 60 40 145	810	-	440	-		670	1,5	50 pcs
11 60 40 155	700	-	670	-		670	2	50 pcs
11 60 40 170	700	-	440	-		670	1,4	50 pcs
11 60 01 010	640	-	720	-		640	2	50 pcs

*Further details page 75

SIDE EDGE CUSTOMIZATION

Hot transfer printing
Minimum order quantity required
Maximum area for printing 68x15mm



all dimensions are in mm

ACCESSORIES AND SPARE PARTS AT PAGES 37-38

WHEELMATE PRO

MUDGUARDS WITH PRE ASSEMBLED ADJUSTABLE BRACKETS



UV stabilized polypropylene copolymer

Colour: black (UV stabilized)

Wheelmate mudguards with pre assembled brackets
Scratch resistant proprietary surface

Adjustable Ø 42mm fixing eyelet for conventional mudguards - Max torque 12Nm
Adjustable Ø 42mm non slip fixing eyelet for quarter mudguards - Max torque 15Nm
Qwiklok versions available upon request

Conventional mudguard with preassembled brackets 57 05 18 010

Code	A	B	C	R	K	k	D	kg	mpb*
11 60 46 380	2100	1340	660	670	970	790	450	7,6	36 pcs
11 60 46 410	2100	1350	440	670	970	790	250	5,7	48 pcs
11 60 46 465	1900	1330	650	670	985	805	450	7,3	36 pcs
11 60 46 460	1940	1310	450	650	1010	850	250	5	48 pcs
11 60 46 505	1700	1100	560	550	920	720	350	5	48 pcs
11 60 46 535	1580	1000	550	500	810	600	350	4,5	48 pcs
11 60 46 540	1580	1000	500	500	810	600	350	4,3	60 pcs
11 60 46 640	1400	900	450	450	690	510	250	3,8	60 pcs
11 60 46 655	1380	890	400	440	670	495	225	3,5	72 pcs

*Minimum production batch

Quarter mudguard with preassembled brackets 57 05 17 010

Code	A	B	C	R	K	k	D	kg	mpb*
11 60 45 130	800	-	670	670	-	-	450	2,1	32 pcs
11 60 45 145	810	-	440	670	-	-	250	3	32 pcs
11 60 45 155	700	-	670	670	-	-	450	3,5	32 pcs
11 60 45 170	700	-	440	670	-	-	250	2,9	32 pcs
11 60 01 037	640	-	720	640	-	-	525	3,5	32 pcs

*Further details page 76

SIDE EDGE CUSTOMIZATION

Hot transfer printing
Minimum order quantity required
Maximum area for printing 68x15mm



all dimensions are in mm

ACCESSORIES AND SPARE PARTS AT PAGES 37-38

WHEELMATE PRO KOMPLEET

MUDGUARDS WITH PRE ASSEMBLED ADJUSTABLE BRACKETS AND MUDFLAP



QWIKLOK
COMPATIBILITY

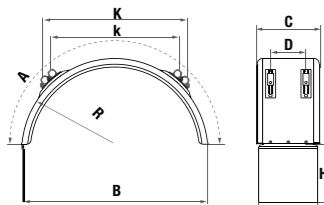


UV stabilized polypropylene copolymer

Colour: black (UV stabilized)

Wheelmate Pro Mudguards with pre assembled Spray Buster mudflap
Scratch resistant proprietary surface
Adjustable Ø 42mm fixing eyelet for conventional mudguards - Max torque 12Nm
Adjustable Ø 42mm non slip fixing eyelet for quarter mudguards - Max torque 15Nm
Qwiklok versions available upon request

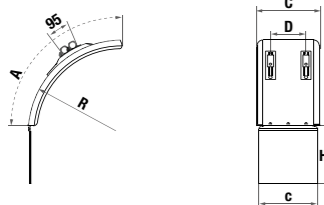
Approved anti-spray device according to regulation 109/2011-2015/166
further details under download section www.lagoaccessori.it



Conventional mudguard + preassembled brackets 57 05 18 010 + internal antispray + mudflap

Code	A	B	C-c	R	K	k	D	H mudflap	kg	mpb*
14 60 35 380	2100	1340	660-604	670	970	790	450	400	9	24 pcs
14 60 35 410	2100	1350	440-412	670	970	790	250	400	6,3	40 pcs
14 60 35 465	1900	1330	650-604	670	985	805	450	400	8,5	24 pcs
14 60 35 460	1940	1310	450-412	650	1100	850	250	400	5,9	40 pcs
14 60 35 505	1700	1100	560-508	500	920	720	350	400	6,7	36 pcs

*Minimum production batch



Quarter mudguard + preassembled brackets 57 05 17 010 + mudflap

Code	A	B	C-c	R	K	k	D	H mudflap	kg	mpb*
14 60 30 130	800	-	670-604	670	-	-	450	400	2,1	18 pcs
14 60 30 145	810	-	440-412	670	-	-	250	400	3	18 pcs
14 60 30 155	700	-	670-604	670	-	-	450	400	3,5	18 pcs
14 60 30 170	700	-	440-412	670	-	-	250	400	2,9	18 pcs

*Further details page 76



MUDFLAP CUSTOMISATION

Silk screen printing
Minimum order quantity required
Maximum area for printing 330x190mm
Nr. of colours to be evaluated



SIDE EDGE CUSTOMIZATION

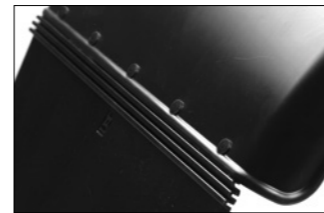
Hot transfer printing
Minimum order quantity required
Maximum area for printing 68x15mm

all dimensions are in mm

ACCESSORIES AND SPARE PARTS AT PAGES 37-38

SPRAY BUSTER

MUDFLAPS WITH ANTI-SPRAY

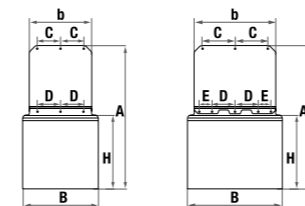


UV stabilized polypropylene copolymer

Colour: black (UV stabilized)

Mudflap with homologated anti-spray device
3 sizes
Scratch resistant proprietary surface
Supplied with mudflap/mudguard mounting fasteners

Approved anti-spray device according to regulation 109/2011-2015/166
further details under download section www.lagoaccessori.it



Code	A	b-B	H mudflap	C	D	E	kg	std packaging*
12 60 64 210	780	340-412	400	127	125	-	1,6	12 pcs
12 60 64 215	780	436-508	400	175	125	68	2	12 pcs
12 60 64 220	780	532-604	400	223	125	117	2,4	12 pcs

*Further details page 76



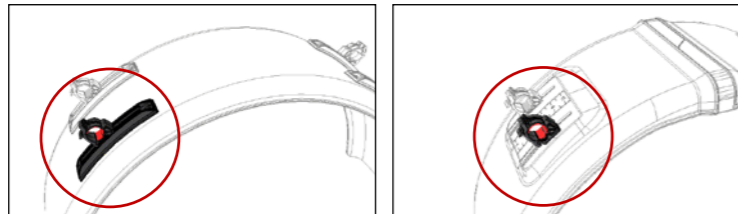
MUDFLAP CUSTOMISATION

Silk screen printing
Minimum order quantity required
Maximum area for printing 330x190mm
Nr. of colours to be evaluated

all dimensions are in mm

QWIKLOK

MUDGUARD FITTING BRACKETS



Nylon GF - Epdm rubber PA6

Colour: black - red (UV stabilized)



Qwiklok mudguard mounting eyelet & bracket system
 Quick, effective and smart fastening / assembly solution without fixing hardware
 Assembly time 50% quicker compared to traditional systems with hardware
 Fits d. 42mm tubes
 Fully adjustable
 Supplied rail/mudgard with mounting screws, nuts and washers
 Top or frontal mounting



Check compatibility of Qwiklok system on mudguards families:

- Kompleet Kombi at pages 26-27
- Kompleet Kombi Tipper at page 28
- Kompleet at page 30
- Wheelmate Pro at page 33
- Wheelmate Pro Kompleet at page 34

Mudguard fitting brackets			
Code	description	mat/finishing	std packaging
57 60 40 010	Qwiklok bracket	UV Stabilized copolymer polypropylene GF - Nylon GF - Epdm rubber PA6	48 pcs

Fixing eyelet			
Code	description	mat/finishing	std packaging
05 05 02 028	Qwiklok eyelet	Nylon GF - Epdm rubber	12 pcs

MOUNTINGS

Frontal mounting



Mounting from the bottom



all dimensions are in mm

SARÀKA

MUDGUARD QUICK FASTENING KIT



UV stabilized acetalic resin

Colour: black (UV stabilized)

Fully adjustable pair of mudguard quick fastening brackets
 Provides unlimited left and right adjustment, guarantees perfect ground alignment and lining up with adjacent mudguards
 No preliminary drilling, riveting, glueing or fastening necessary
 Assembly time 50% quicker compared to traditional systems
 No tube end caps required
 Fits Ø 42mm tubes
 Customisation ready - Plastic laminated reflective adhesive label - Four colour process print - Minimum order and production requirement

Code	description	std packaging
57 05 35 010	Pair of Saràka Ø 42mm brackets - Hardware included	12 pcs

Saràka is designed to be used exclusively with LAGO Wheelmate mudguards:
 11 60 41 380 - 11 60 41 410 - 11 60 41 465 - 11 60 41 460



MUDGUARD FITTING BRACKETS

UV stabilized copolymer polypropylene - Epdm rubber - Acetalic resin - Steel - Stainless steel
 Eyelet clamping fasteners Geomet® surface treated

All brackets are supplied with mounting screws, nuts and washers

Mudguard fitting brackets - Suitable for quarter mudguards			
Code	description	mat/finishing	std packaging
57 05 17 010	Adjustable bracket Ø 42mm - Hardware included Non slip fixing eyelet - Max torque 15Nm	PA6 Nylon GF PA6 Nylon GF - Epdm Rubber	48 pcs

Mudguard fitting brackets - Suitable for conventional mudguards			
Code	description	mat/finishing	std packaging
57 05 18 010	Adjustable bracket Ø 42mm - Hardware included Fixing eyelet - Max torque 12Nm	PA6 Nylon GF PA6 Nylon GF	48 pcs

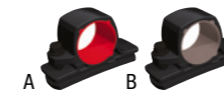
Mudguard fitting brackets - Suitable for conventional mudguards			
Code	description	mat/finishing	std packaging
57 05 15 005	Adjustable bracket Ø 34mm - Hardware included Fixing eyelet	Acetalic resin PA6 Nylon GF	48 pcs

Fixing eyelet				
Code	description	mat/finishing	fig.	std packaging
05 05 02 014	Adjustable non-slip fixing eyelet - Ø42mm	PA6 Nylon GF - Epdm Rubber	A	12 pcs
05 05 02 016	Adjustable fixing eyelet - Ø 42mm	PA6 Nylon GF	B	12 pcs
05 05 02 021	Adjustable fixing eyelet - Ø 34mm	PA6 Nylon GF	-	12 pcs

Code	description	Ø	mat/finishing	std packaging
57 05 10 010	Fixed bracket	42	Acetalic resin	100 pcs
57 05 10 015	Fixed bracket	48	Acetalic resin	100 pcs
57 05 10 020	Fixed bracket	54	Acetalic resin	100 pcs

57 11 30 010	Fixed Metal steel bracket	42	Steel - Galvanized	50 pcs
57 11 30 020	Fixed Metal steel bracket	54	Steel - Galvanized	50 pcs

57 11 15 010	Adjustable steel bracket	42	Steel - Galvanized	50 pcs
57 16 15 010	Adjustable steel bracket	42	Steel - Black epoxy coating	50 pcs
57 30 15 010	Adjustable stainless steel bracket	42	Stainless steel	50 pcs



all dimensions are in mm

MOUNTING TUBES

Steel S235JR - Stainless steel AISI 304 2B

Different dimensions, finishing and thickness available upon request
Tube end cap not included



Code	description	L lenght	thickness	mat/finishing	std packaging
16 11 10 020	Straight tube Ø 42mm	750	2	Steel-Galvanized	14 pcs
16 11 20 020	Straight tube Ø 54mm	750	2	Steel-Galvanized	14 pcs
16 11 10 110	Straight tube Ø 42mm - round flange	600+5 (flange)	2	Steel-Galvanized	14 pcs
16 11 10 100	Straight tube Ø 42mm - round flange	750+5 (flange)	2	Steel-Galvanized	14 pcs
16 16 10 100	Straight tube Ø 42mm - round flange	750+5 (flange)	2	Steel-Black epoxy coating	14 pcs
16 11 10 200	Straight tube Ø 42mm - square flange	750+5 (flange)	2	Steel-Galvanized	10 pcs
16 11 01 007	Straight tube Ø 42mm - reinforced rectangular flange	750+5 (flange)	2	Steel-Galvanized	10 pcs
17 11 10 015	Bent tube Ø 42mm	770	2	Steel-Galvanized	12 pcs
17 11 20 015	Bent tube Ø 54mm	770	2	Steel-Galvanized	8 pcs
18 30 10 025	Double bent tube Ø 42mm	730	2	Stainless Steel	12 pcs
18 11 10 105	Double bent tube Ø 42mm - round flange	730+5 (flange)	2	Steel-Galvanized	12 pcs
18 16 10 115	Double bent tube Ø 42mm - round flange	580+5 (flange)	2	Steel-Black epoxy coating	12 pcs
18 16 10 105	Double bent tube Ø 42mm - round flange	730+5 (flange)	2	Steel-Black epoxy coating	12 pcs

TUBE END CAPS

UV stabilized polyethylene



Code	description	std packaging
05 09 02 003	Tube end cap Ø 42mm	bulk
05 09 02 001	Tube end cap Ø 54mm	bulk

MUDGUARD FITTING KITS

Steel S235JR

Straight tube + 1 welded fixed bracket + 1 moveable fixed bracket (tube end cap not included)
Different dimensions and finishing available upon request



Code	Ø	L lenght	thickness	finishing	std packaging
24 11 12 035	Ø 42mm	600	2	Galvanized	10 pcs
24 11 12 020	Ø 42mm	750	2	Galvanized	10 pcs
24 11 22 020	Ø 54mm	750	2	Galvanized	10 pcs

FLANGED TUBE CLAMPS

Steel S235JR - Clamps thickness 2,5mm - Flange thickness 6mm

Different dimensions and finishing available upon request



Code	description	finishing	std packaging
56 11 15 010	Tube fitting Ø 42mm - round flange	Galvanized	50 pcs
56 11 20 010	Tube fitting Ø 42mm - square flange	Galvanized	50 pcs
56 11 20 020	Tube fitting Ø 54mm - square flange	Galvanized	50 pcs
56 11 25 020	Reinforced tube fitting Ø 54mm - square flange	Galvanized	50 pcs

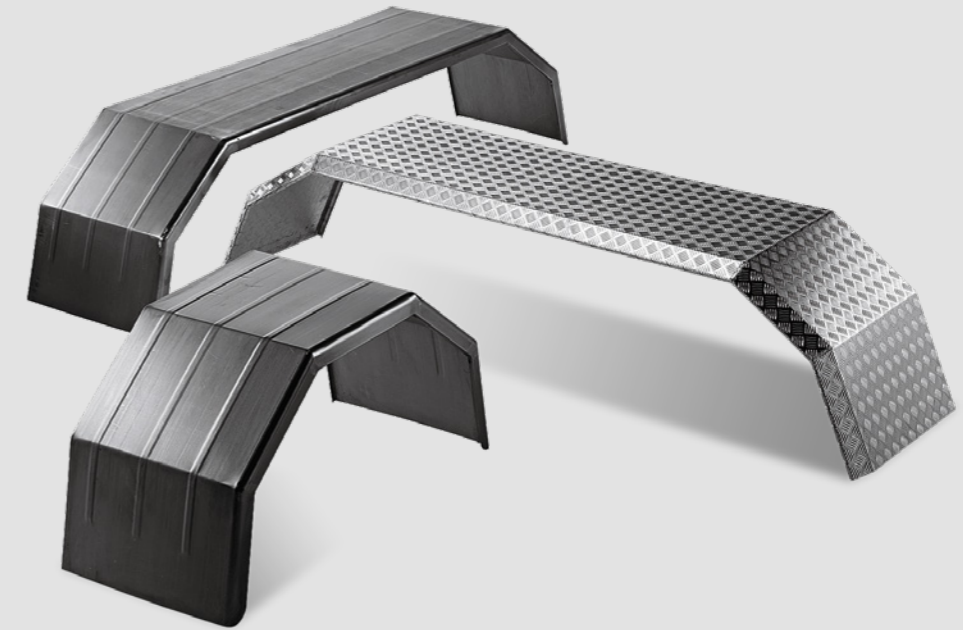
Nylon GF

Code	description	std packaging
56 05 30 010	Tube fitting Ø 42mm	50 pcs

all dimensions are in mm

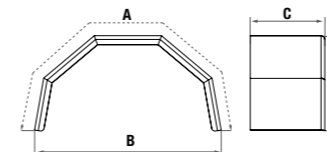
ROCK'N'ROAD

MUDGUARDS FOR SPECIAL VEHICLES



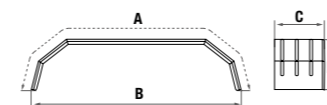
Steel S235JR - Stainless steel AISI 304 2B - Aluminium peraluman 5754

Different dimensions, finishing and thickness available upon request



Code	description	A	B	C	thickness	H	mpb*
10 25 25 360	Steel S235JR	2300	1400	650	1,8	700	10 pcs
10 30 25 360	Stainless steel AISI 304 2B	2300	1400	650	1,5	700	10 pcs
10 32 25 360	Flowered stainless steel AISI 304 2B	2300	1400	650	1,5	700	10 pcs
10 46 25 360	Checkered plate aluminium	2300	1400	650	3+2	700	10 pcs

*minimum production batch



Code	description	A	B	C	thickness	H	mpb*
10 25 26 315	Steel S235JR	3500	2740	650	1,8	660	10 pcs
10 30 26 315	Stainless steel AISI 304 2B	3500	2740	650	1,5	660	10 pcs
10 32 26 315	Flowered stainless steel AISI 304 2B	3500	2740	650	1,5	660	10 pcs
10 46 26 315	Checkered plate aluminium	3500	2740	650	3+2	660	10 pcs

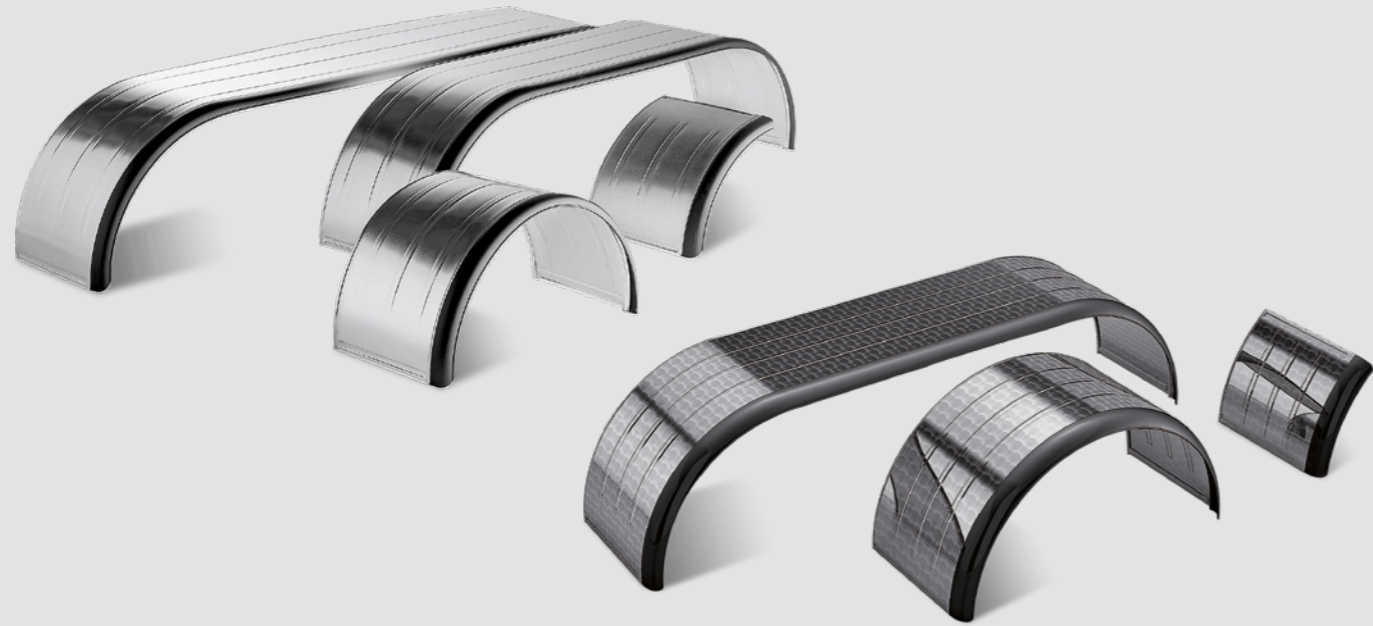
*minimum production batch

all dimensions are in mm

ACCESSORIES AND SPARE PARTS AT PAGE 38

INTERFLEX

GALVANIZED STEEL / STAINLESS STEEL MUDGUARDS
WITH RUBBER EDGE SINGLE AND MULTI AXLE



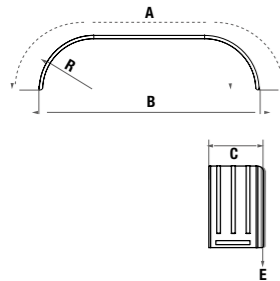
ZG Galvanized steel

Thickness: 0,8mm
Rubber edge: 60mm or 90mm



IFG Machine turned finish stainless steel AISI 304 2B

Thickness: 0,8 mm
Rubber edge: 90 mm



Tandem mudguards

ZG Code	E	IFG Code	E	A	B	C	R	mpb*
10 13 11 315	90	10 33 11 305	90	3550	2740	650	670	10 pcs
10 13 11 310	90	10 33 11 310	90	3550	2740	600	670	10 pcs
10 13 11 335	90	10 33 11 335	90	3450	2640	650	670	10 pcs
10 13 11 340	90	10 33 11 340	90	3450	2640	600	670	10 pcs

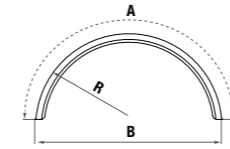
*minimum production batch

all dimensions are in mm

ACCESSORIES AND SPARE PARTS AT PAGE 38

INTERFLEX

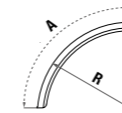
MUDGUARDS WITH RUBBER EDGE
SINGLE AND MULTI AXLE



Single axle mudguards

ZG Code	E	IFG Code	E	A	B	C	R	mpb*
10 13 11 380	90	10 33 11 380	90	2100	1340	650	670	10 pcs
10 13 11 400	90	10 33 11 400	90	2100	1340	450	670	10 pcs
10 13 11 435	90	10 33 11 435	90	2000	1260	550	630	10 pcs
10 13 11 485	90	10 33 11 485	90	1800	1170	650	585	10 pcs
10 13 11 490	90	10 33 11 490	90	1800	1170	600	585	10 pcs
10 13 21 515	60	10 33 11 515	90	1700	1100	550	550	10 pcs
10 13 21 560	60	10 33 11 560	90	1570	1000	550	500	10 pcs
10 13 21 565	60	10 33 11 565	90	1570	980	500	490	10 pcs
10 13 21 570	60	10 33 11 570	90	1570	980	450	490	10 pcs
10 13 21 625	60	10 33 11 625	90	1450	880	400	440	10 pcs
10 13 21 630	60	10 33 11 630	90	1450	880	270	440	10 pcs
10 13 21 670	60	10 33 11 670	90	1360	850	450	425	10 pcs
10 13 21 675	60	10 33 11 675	90	1360	850	400	425	10 pcs
10 13 21 700	60	10 33 11 700	90	1250	800	250	400	10 pcs

*minimum production batch



Quarter mudguards

ZG Code	E	IFG Code	E	A	B	C	R	mpb*
10 13 20 080	60	10 33 10 080	90	1000	-	650	670	20 pcs
10 13 20 130	60	10 33 10 130	90	800	-	650	650	20 pcs
10 13 20 135	60	10 33 10 135	90	800	-	600	650	20 pcs
10 13 20 155	60	10 33 10 155	90	700	-	650	650	20 pcs
10 13 20 160	60	10 33 10 160	90	700	-	600	650	20 pcs
10 13 20 165	60	10 33 10 165	90	700	-	500	650	20 pcs
10 13 20 185	60	10 33 10 185	90	650	-	650	650	20 pcs
10 13 20 200	60	10 33 10 200	90	600	-	650	650	20 pcs
10 13 20 205	60	10 33 10 205	90	600	-	600	630	20 pcs
10 13 20 210	60	10 33 10 210	90	600	-	500	630	20 pcs

*minimum production batch

Different dimensions, finishing and thickness available upon request:

- galvanised steel 0,8mm - 1mm - 1,2mm
- stainless steel AISI 3042B 0,8mm - 1mm
- machine turned finish stainless steel 0,8mm - 1mm
- polished stainless steel 0,8mm - 1mm

all dimensions are in mm

ACCESSORIES AND SPARE PARTS AT PAGE 38



SAFETY & HYGIENE

SHELLY

FIRE EXTINGUISHER BOX

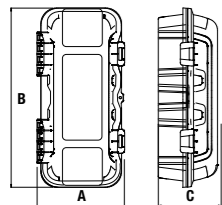


UV stabilized polypropylene copolymer

Colour: red translucent (UV stabilized)

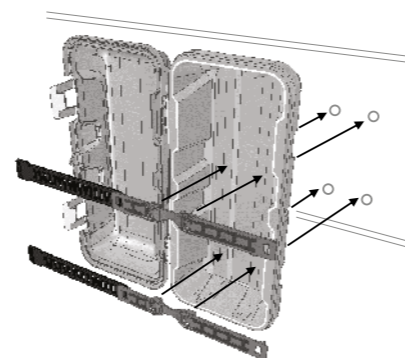
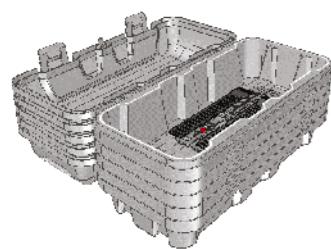


Suitable for 6kg fire extinguishers
 Red translucent finishing allowing immediate identification of the extinguisher in case of control, inspection or quick intervention
 Resistance to water
 Integrated lid resistant to water, dust and external agents thanks to integrated labyrinth coupling
 Unique fire extinguisher retention system: mounting system is directly fix to the vehicle, fire extinguisher box becomes protective element and no more structural element
 Adjustable and extensible retention elastomer high-resistance strap



Code	extinguisher	extinguisher Ø min-max	A	B	C	kg	std packaging*
49 61 45 010	6kg	150-170	305	627	220	1,9	18/126 pcs

*Further details page 77



all dimensions are in mm

ACCESSORIES AND SPARE PARTS DETAILS AT PAGE 49

FITEASY

FIRE EXTINGUISHER BOX



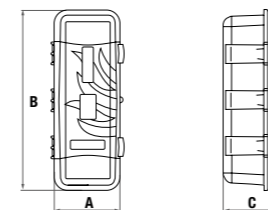
UV stabilized polypropylene copolymer

Colour: red and black (UV stabilized)



Ultimate quality - Unparalleled style
 3 sizes: 6kg, 6/9kg and 9/12kg
 Ergonomic closures with double action lever against accidental opening
 Pre assembled exclusive Rex internal adjustable retention system included
 Pre arranged mounting hole pattern

Can be used as side protection device according to regulation ECE 73R01
 further details under download section www.lagoaccessori.it



Code	extinguisher	extinguisher Ø min-max	A	B	C	kg	std packaging*
49 66 23 010	6kg	150-190	300	610	255	4,2	42 pcs
49 66 23 013	6/9kg	150-190	300	700	255	4,7	42 pcs
49 66 23 015	9/12kg	150-190	300	775	255	5	32 pcs

*Further details page 77



all dimensions are in mm

ACCESSORIES AND SPARE PARTS DETAILS AT PAGE 49

RELEASEY

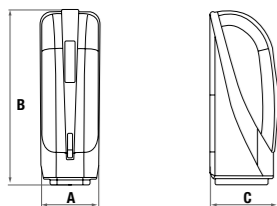
FIRE EXTINGUISHER BOX WITH REMOVABLE LID



UV stabilized polyethylene

Colour: red and black, black (UV stabilized)

Single action quick operation
2 sizes: 6kg and 9/12kg
Security clip against accidental opening
Pre-assembled exclusive Rex internal adjustable retention system included



Code	colour	extinguisher	extinguisher Ø min-max	A	B	C	kg	std packaging*
49 56 18 010	black-red	6kg	150-190	260	635	275	3,85	48 pcs
49 56 18 015	black-red	9/12kg	150-190	255	765	300	5,2	28 pcs
49 50 18 010	black-black	6kg	150-190	260	635	275	3,85	48 pcs
49 50 18 015	black-black	9/12kg	150-190	255	765	300	5,2	28 pcs

*Further details page 77



all dimensions are in mm

ACCESSORIES AND SPARE PARTS DETAILS AT PAGE 49

FOLPY & FOLPY KIT

TOP LOAD FIRE EXTINGUISHER BOX



Uv stabilized polyethylene

Colour: red and black (UV stabilized)

Usability & Style

Suitable for 6 kg fire extinguishers
Quick and ergonomic opening with twisting lid and safety clip for double safety against accidental opening
Internal retention spring element
Supplied hardware kit to fix Folpy to the supports

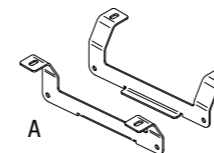
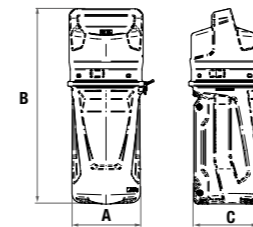


The use of dedicated LAGO mounting bracket kit is suggested to ensure optimum product performance

Folpy

Code	extinguisher	extinguisher Ø min-max	A	B	C	kg	std packaging*
49 56 40 010	6kg	150 - 165	282	636	250	2,0	36 pcs

*Further details page 70



FOLPY EASY BRACKET

einfache horizontale-Montage

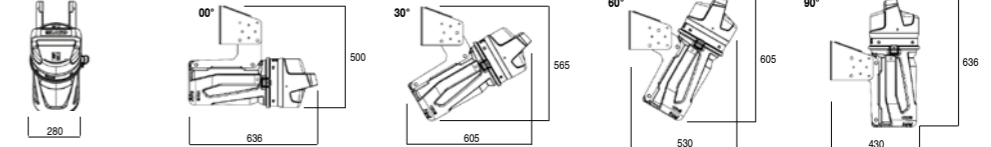
Code	description	fig.	kg	std packaging
31 16 63 001	S 235 JR (Fe360 BFN) - Black polyester powder coating	A	1	1 pc

FOLPY UNIVERSAL HALTERUNG

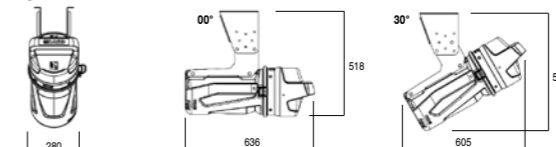
Smart and versatile. One product to cover all needs

Code	description	kg	std packaging
31 16 63 000	S 235 JR (Fe360 BFN) - Black polyester powder coating	3	1 pc

CHASSIS



PLATFORM



all dimensions are in mm

SLYKÒN

SLIDE ACTION EXTINGUISHER BOX



GF reinforced polypropylene Colour: red and black (UV stabilized)

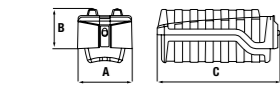
Easy and fast access to the extinguisher thanks to innovative slide-tilt opening
Supplied only with dedicated mounting bracket kit, horizontal or angled version - Exclusive retention system

Can be used as side protection device according to regulation ECE 73R01
further details under download section www.lagoaccessori.it

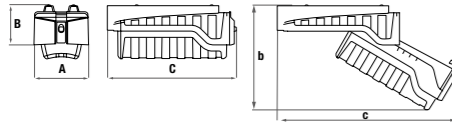
SLYKÒN

Code	extinguisher	A	B	C	extinguisher Ø min-max	kg	fig.	std packaging*
49 66 25 013	6/9/12kg	322	311	729	150-190	3,5	A	42 pcs

*Further details page 77



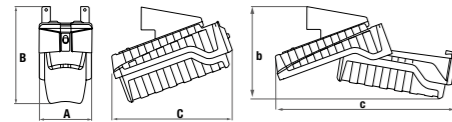
A SLYKÒN



B Horizontal fitting bracket

Horizontal fitting bracket kit

Code	extinguisher	A	B	C	extinguisher Ø min-max	b	c	kg	fig.	std packaging
31 16 61 101	6/9/12kg	320	315	766	150-190	571	1013	11,8	B	24 pcs



C Angled fitting bracket

Angled fitting bracket kit

Code	extinguisher	A	B	C	extinguisher Ø min-max	b	c	kg	fig.	std packaging
31 16 61 102	6/9/12kg	320	585	723	150-190	560	1085	7,5	C	24 pcs

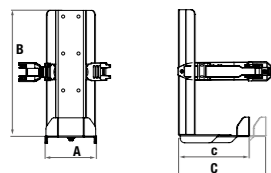
GRABBY

ADJUSTABLE FIRE EXTINGUISHER VERTICAL CRADLE



Painted red steel S235JR - Stainless steel AISI 304 2B

Adjustable fire extinguisher cradle
Rex extinguisher retention kit included
Recommended for static application only

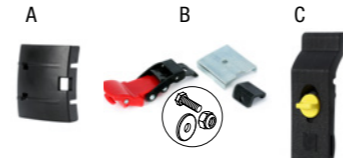


Code	finishing	extinguisher	A	B	c-C	extinguisher Ø min-max	kg	std packaging
49 17 35 015	Red epoxy coating	6/9/12kg	167	432	170/210	150-190	3,4	2 pcs
49 30 35 015	Stainless steel	6/9/12kg	167	432	170/210	150-190	3,4	2 pcs

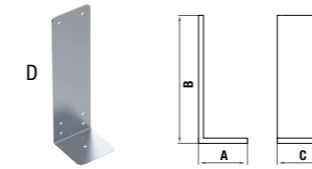
all dimensions are in mm

ACCESSORIES AND SPARE PARTS DETAILS AT PAGE 49

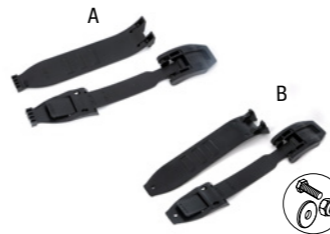
SPARE PARTS AND ACCESSORIES



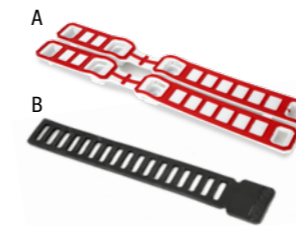
Code	description	A	B	C	std packaging
05 09 04 037	A - Fiteasy - Nylon lever latch				bulk
07 11 04 002	B - Releasy - Locking clip for 6 and 9/12kg model				bulk
07 50 04 001	C - Slykòn - Handle sub assembly				bulk
32 11 20 001	D - Releasy - Galvanized steel mounting bracket	153	503	170	bulk



Code	description	std packaging
50 50 15 010	Releasy - Lid for 6kg model - black	2 pcs
50 51 15 010	Releasy - Lid for 6kg model - red	2 pcs
50 50 15 015	Releasy - Lid for 12kg model - black	2 pcs
50 51 15 015	Releasy - Lid for 12kg model - red	2 pcs



Code	description	std packaging
07 60 04 002	A - Fiteasy Rex retention kit	bulk
07 60 04 003	B - Releasy and Grabby Rex retention kit	bulk



Code	description	std packaging
05 09 04 040	A - Shelly retention kit (pair)	1 pc
05 07 02 049	B - Shelly rubber fastener	12 pcs



Code	description	std packaging
50 51 40 010	A - Folpy Lid and safety clip	bulk
05 05 02 034	B - Folpy Safety clip	bulk
05 07 02 048	C - Folpy O-ring	bulk

all dimensions are in mm

BIO KIT CASE

HYGIENE FOR DRIVERS

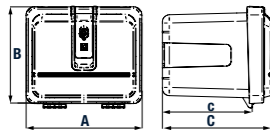


Polypropylene copolymer

Colour: white and red (UV stabilized)

Effective solutions to accompany the transportation professional in safe travels
The Lago Bio Kit integrates a few very high quality essentials which you should never be caught without

Enveloping door with lever locking system
Reinforcement ribs for impact and shock resistance
Exclusive double release lever locking system with key and MLD magnetic device
Can be used as side protection device according to regulation ECE 73R01



Code	Description	A	B	C-c	std packaging*
44 60 59 116	Bio kit case MT400	400	350	300-375	1 pc

*Further details page 78

Bio Kit Case is delivered in single cardboard box and contains:

- 2 Horizontal shelves (assembled)
- 1 Vertical divider (assembled)
- 1 Sanitizing Gel, contains alcohol and chlorhexidine digluconate, oils and plant extracts, emollient and deodorizing characteristics
- 2 Pairs of reusable latex gloves, fully compatible with alcohol based sanitizers
- 2 Face reusable triple layer masks can be washed at 60°C and sterilized using the vapor. Water repelling, breathable and anti-allergenic, environmentally friendly.
- 1 Face shield certified to Intertek standard EN166:2004, complies to 89/686/CEE (and UE 2016/425) directives
- 1 First Aid Kit with CE approved products:
 - 2 Pair of sterile gloves
 - 1 Jodopovidone disinfectant solution at 10% 125 ml
 - 1 Saline solution 250 ml
 - 1 Sterile gauze 18x40 cm sachets
 - 1 20g sterile cotton wool pack
 - 3 Sterile gauze 10x10 cm sachets
 - 1 Sterile tweezers
 - 1 Pack of cotton
 - 1 Plastosan 10 assorted dressings
 - 1 Adhesive plaster 2,5 cm x 5m
 - 1 Gauze bandage 10 cm x 3,5 m
 - 1 Pair of scissors 10 cm FOR078
 - 1 Tourniquet
 - 1 Instant ICE pack
 - 1 Sanitary bag

all dimensions are in mm

BIO KIT CABINET

HYGIENE FOR DRIVERS

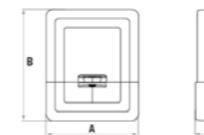


Polypropylene copolymer

Colour: white and red (UV stabilized)

Effective solutions to accompany the transportation professional in safe travels
The Lago Bio Kit integrates a few very high quality essentials which you should never be caught without

Sliding, removeable lid with bungee chord



Code	Description	A	B	C-c	kg	std packaging*
53 21 13 010	Bio kit cabinet magnetic mounts	270	325	71	0,8	14 pcs
53 21 13 015	Bio kit cabinet suction cup kit	270	325	71	0,8	14 pcs

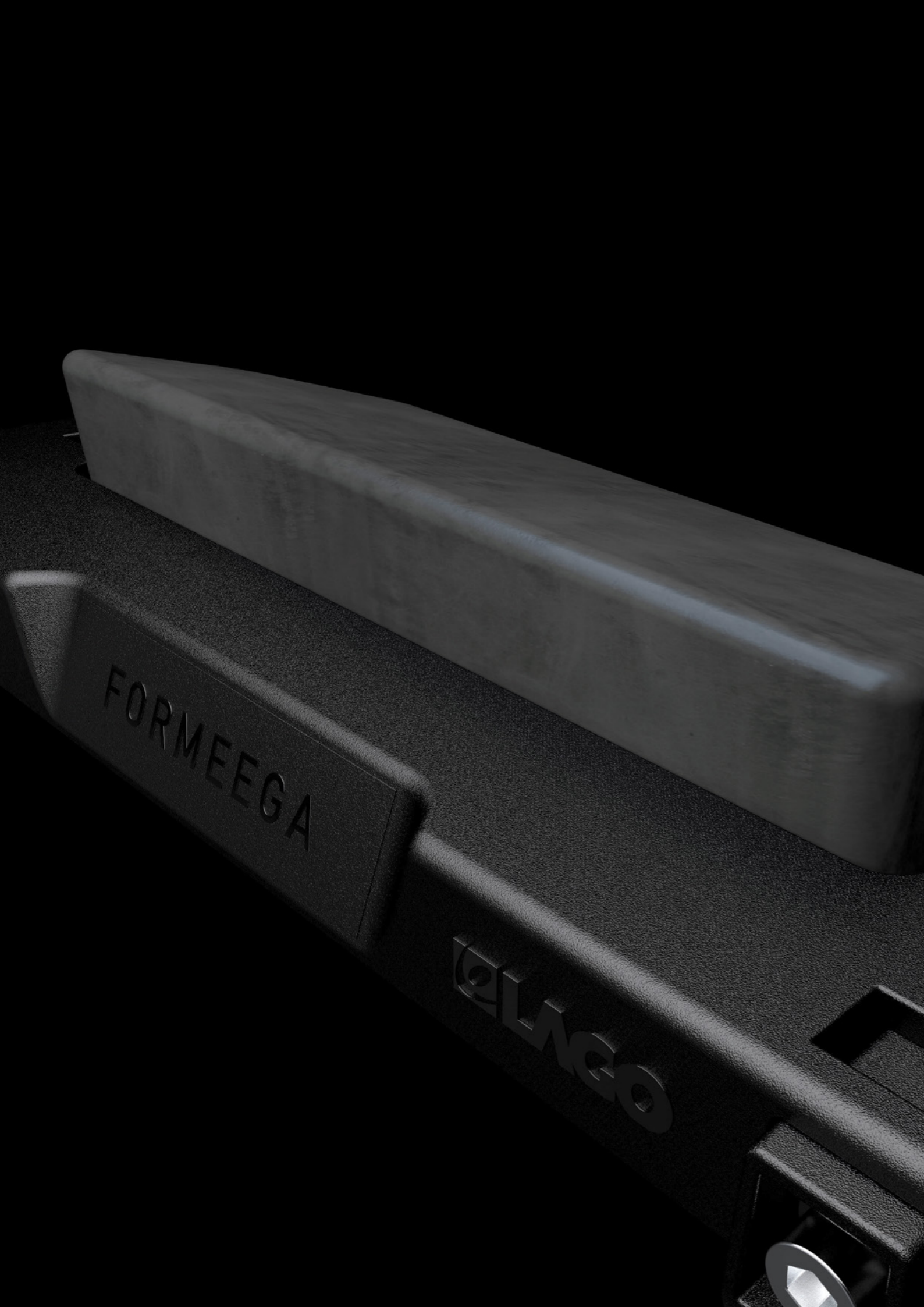
*Further details page 78

Bio Kit Cabinet is delivered in single cardboard box and contains:

- 1 Sanitizing Gel, contains alcohol ad chlorhexidine digluconate, oils and plant extracts, emollient and deodorizing characteristics
- 2 Pairs of reusable latex gloves, fully compatible with alcohol based sanitizers
- 2 Face reusable triple layer masks can be washed at 60°C and sterilized using the vapor. Water repelling, breathable and anti-allergenic, environmentally friendly.
- 1 Bulkhead mounting options offered by threaded inserts included in all versions
- 2 Options: magnetic or suction cup fasteners



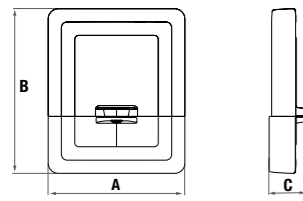
all dimensions are in mm



SPECIAL CARRIERS

HOLDYX & ROLLYX

DOCUMENT HOLDERS



Holdyx

UV stabilized polyethylene

Colour: grey (UV stabilized)

Trailer document holder - Sliding, removeable lid with bungee chord

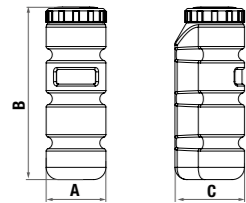
Code	A	B	C	kg	std packaging
53 50 12 001	270	325	71	0,8	26 pcs

Rollyx

UV stabilized polyethylene

Colour: grey and black (UV stabilized)

Provided with integrated threaded bushings
Watertight threaded cap with bungee chord
Ø 90mm opening



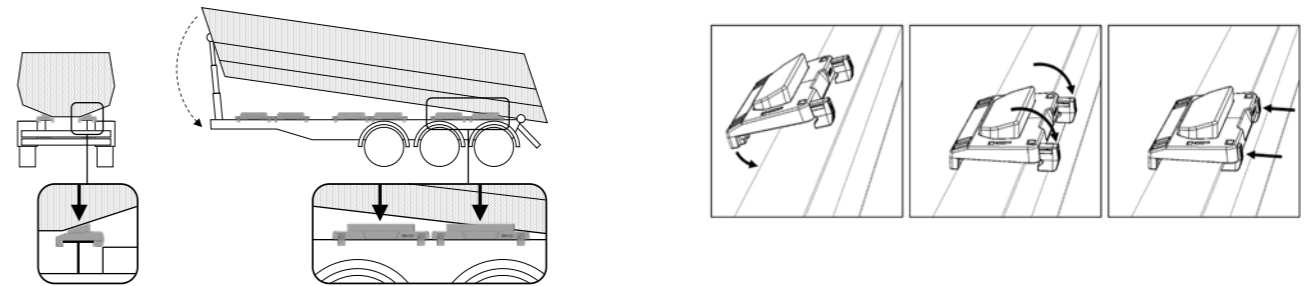
Code	A	B	C	kg	std packaging
53 57 15 001	120	340	140	1	21 pcs

all dimensions are in mm

TIPPER
SPECIAL

FORMEEGA

TIPPER SUPPORTING PAD



Uv stabilized PA6 + Rubber

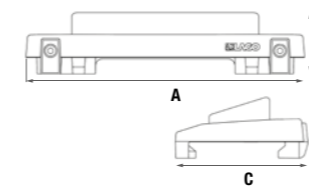
Colour: black

Supporting pad for tipping trailers

The adjustable fixing system makes the pad adaptable to different main beam dimension:

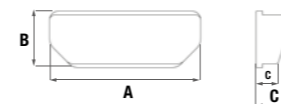
125-160 mm width, 7-12 mm thickness

The height of the support can be adjusted thanks to dedicated spacers



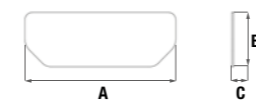
Formeega

Code	description	A	B	C (min-max)	kg	std packaging
40 05 25 001	with sloping pad	420	90	190-230	3	6 pcs
40 05 25 002	with flat pad	420	64	190-230	2,5	6 pcs



Formeega Pad

Code	description	A	B	c-C	kg	std packaging
40 07 24 001	sloping pad	280	104	42-67	2,00	bulk
40 07 24 003	flat pad	280	104	64	1,5	bulk



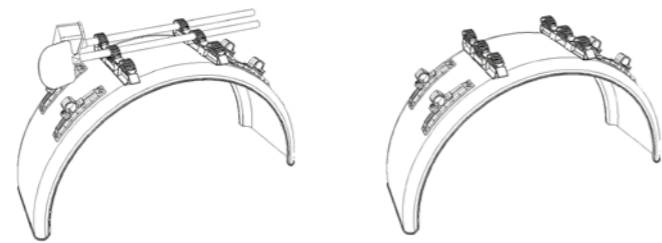
Formeega Spacer

Code	A	B	C	kg	std packaging
40 07 24 002	280	100	4	0,15	24 pcs

all dimensions are in mm

PORTTER UNIVERSAL

BROOM, SHOVEL AND LADDER HOLDER



PA6 GF + rubber

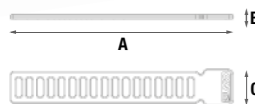
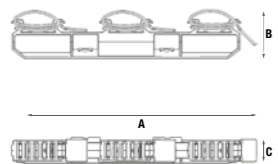
Colour: Black

Lighter, Faster, Better
Simple and fast assembly
Substantial weight reduction
Necessary hardware for fastening to mudguard included
Extra corrosion resistant

Portter Universal

Code	A	B	C	Kg	std packaging
72 60 40 001*	425	90	45	0,5	8 pcs

*3 rubber fasteners (05 07 02 049) included



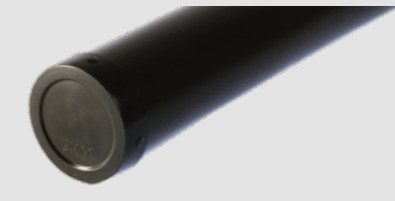
Spare parts - Rubber Portter fasteners

Code	A	B	C	Kg	std packaging
05 07 02 049	290	5	45	0,05	12 pcs

all dimensions are in mm

HOSE PROTEX

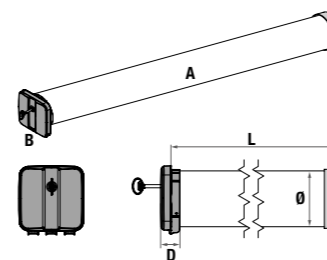
HOSE HOLDERS



UV stabilized polypropylene copolymer
UV stabilized polypropylene
Stainless steel AISI 304 2B

Colour: black (UV stabilized) and stainless steel

Door Supplied with locking system and key - Polypropylene copolymer or stainless steel
End cap Ø 160 or 200mm - Polyethylene or stainless steel
Tube Ø 160 or 200mm - 4 standard lengths - Different sizes upon request



A+B+C - Supplied installed

Code	Ø	L	thickness	D	std packaging
69 60 10 010	160	3000	5	30	20 pcs
69 60 10 015	160	4000	5	30	20 pcs
69 60 10 020	160	5000	5	30	20 pcs
69 60 10 025	160	6000	5	30	20 pcs
69 60 15 010	200	3000	7	30	20 pcs
69 60 15 015	200	4000	7	30	20 pcs
69 60 15 020	200	5000	7	30	20 pcs
69 60 15 025	200	6000	7	30	20 pcs



Code	description	Ø	fig.	std packaging
59 60 20 030	Polypropylene copolymer door	160	B	bulk
59 60 20 035	Polypropylene copolymer door	200	B	bulk

05 60 02 001	Polypropylene copolymer end cap	160	C	bulk
05 60 02 002	Polypropylene copolymer end cap	200	C	bulk

Code	description	Ø	fig.	std packaging
59 30 20 030	Stainlees steel door	160	E	bulk
59 30 20 035	Stainlees steel door	200	E	bulk

05 30 02 001	Stainlees steel end cap	160	F	bulk
05 30 02 002	Stainlees steel end cap	200	F	bulk

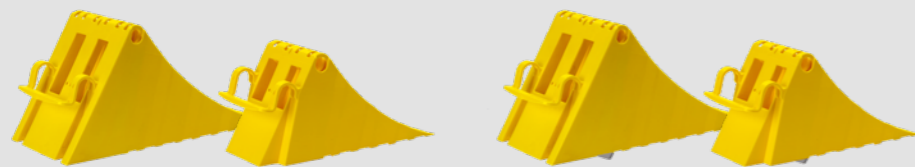
all dimensions are in mm



PROTECTION DEVICES

SOPÉO

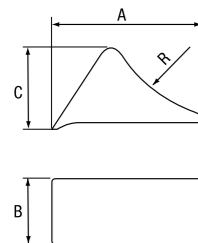
WHEEL CHOCK



Polypropylene

Colour: yellow (UV stabilized)

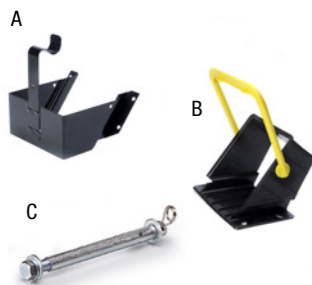
Practical quick release mechanism
 Certified in accordance with DIN 76051-E53 and DIN 76051-E46
 Integrated handle in accordance with DIN 76051-E53 and DIN 76051-E53
 Version with integrated blade
 Solid and lightweight reticular structure



Code	description	A	B	C	R	kg	std packaging
48 63 22 001	Wheel chock Sopéo E46	380	160	190	460	1	216 pcs
48 63 23 001	Wheel chock Sopéo E46 with blade	380	160	190	460	1,1	216 pcs
48 63 12 001	Wheel chock Sopéo E53	470	200	230	560	1,4	156 pcs
48 63 13 001	Wheel chock Sopéo E53 with blade	470	200	230	560	1,5	156 pcs

*Further details page 78

ACCESSORIES

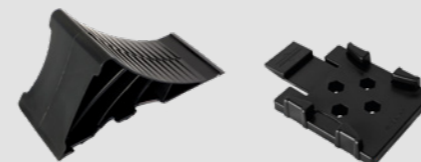


Code	description	fig.	kg	std packaging
32 16 58 001	Black painted metallic wheel chock E46 holder	A	1	138 pcs
32 16 59 001	Black painted metallic wheel chock E53 holder	A	1,4	80 pcs
32 60 61 001	Plastic wheel chock E53 holder	B	1	10 pcs
32 11 60 001	Galvanized tubular support wheel chock holder	C	0,6	80/138 pcs

all dimensions are in mm

MINI SOPÉO 13-14

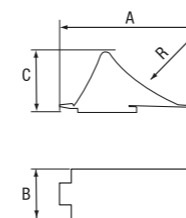
WHEEL CHOCK



Polypropylene

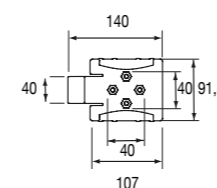
Colour: black (UV stabilized)

Practical and smart
 Ideal wheel chock solution for light trailers
 Supplied with mounting support, suitable for 13" and 14" wheels
 Tested at 1600 kg



Code	description	A	B	C	R	kg	std packaging
31 60 29 100	Wheel chock Mini Sopéo 13-14	247	90	109,6	270	0,27	60/1200 pcs.

*Further details page 78



all dimensions are in mm

LAGOMAX & LAGOMAXPRO

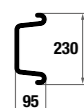
REAR UNDERRUN PROTECTORS



LAGOMAX REAR UNDERRUN PROTECTORS

Steel - Thickness 1,8-2-3mm
 Grey - RAL 9006 Epoxy powder coating - UV stabilized polyethylene end caps
 White - RAL9010 Epoxy powder coating - UV Stabilized polyethylene end caps

Different sizes and colours available upon request - Minimum order quantity requirement



Code	length	height	thickness	color	kg	std packaging
33 18 21 010	1800	230	1,8	grey	10,8	multiple of 3 or 4
33 18 21 030	1900	230	1,8	grey	11,4	multiple of 3 or 4
33 18 21 050	2000	230	1,8	grey	12	multiple of 3 or 4
33 18 21 070	2100	230	1,8	grey	12,5	multiple of 3 or 4
33 18 21 090	2200	230	1,8	grey	13	multiple of 3 or 4
33 18 21 110	2300	230	1,8	grey	13,7	multiple of 3 or 4
33 18 21 130	2400	230	1,8	grey	14,3	multiple of 3 or 4
33 16 01 007	2300	230	1,8	white	13,7	multiple of 3 or 4
33 16 01 010	2400	230	1,8	white	14,3	multiple of 3 or 4
34 18 21 110	2300	230	3	grey	22,6	multiple of 3 or 4
34 18 21 130	2400	230	3	grey	23,6	multiple of 3 or 4

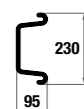


35 18 21 110	2300	430	2	grey	20,7	multiple of 2
35 18 21 130	2400	430	2	grey	21,6	multiple of 2
35 16 01 002	2300	430	2	white	20,7	multiple of 2
35 16 01 001	2400	430	2	white	21,6	multiple of 2

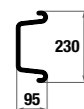
LAGOMAX PRO REAR UNDERRUN PROTECTORS

Machine turned finish stainless steel AISI 304B - Thickness 2mm
 Aluminium - Thickness 5mm

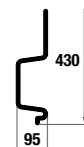
Different sizes and colours available upon request - Minimum order quantity requirement



Code	length	height	thickness	end caps	kg	std packaging
33 32 21 110	2300	230	2	polyethylene	15,2	multiple of 3 or 4
33 32 21 130	2400	230	2	polyethylene	15,8	multiple of 3 or 4
33 32 24 110	2300	230	2	m.t. finish stainless steel	15,2	multiple of 3 or 4
33 32 24 130	2400	230	2	m.t. finish stainless steel	15,8	multiple of 3 or 4



Code	length	height	thickness	end caps	kg	std packaging
34 45 21 110	2300	230	5	polyethylene	13,1	multiple of 3 or 4
34 45 21 130	2400	230	5	polyethylene	13,6	multiple of 3 or 4



Code	length	height	thickness	end caps	kg	std packaging
35 32 21 110	2300	430	2	polyethylene	22,9	multiple of 2
35 32 21 130	2400	430	2	polyethylene	23,9	multiple of 2
35 32 24 110	2300	430	2	m.t. finish stainless steel	23	multiple of 2
35 32 24 130	2400	430	2	m.t. finish stainless steel	24	multiple of 2
35 32 25 110	2300	430	2	skewed-m.t. finish. st. steel	22,9	multiple of 2
35 32 25 130	2400	430	2	skewed-m.t. finish. st. steel	23,9	multiple of 2



Code	description	kg	std packaging
39 50 10 001	End caps pair	0,11	100 pcs

all dimensions are in mm

SEENA 2.0

ALUMINIUM UNDERRUN PROTECTION SYSTEM

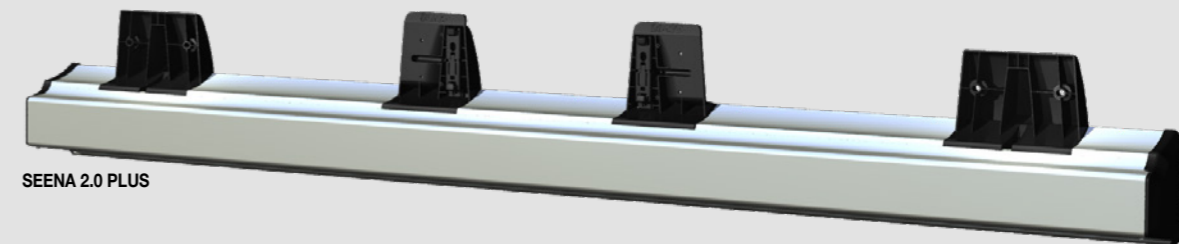
SEENA 2.0 ACCESSORY PROFILE



SEENA 2.0



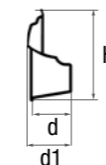
SEENA 2.0 PLUS



Anodized aluminium 6082 T6 profile and cable housing cover - GF Reinforced nylon end caps
 Profile/bracket fastening hardware included

Anodized aluminium
 3 available versions
 4 standard legths, other legths upon request
 Compatible with most popular lighting brands
 Mounting supports and reinforcement brakets
 Customisable rear mudflaps availability
 Laser customisation upon request

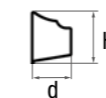
Type-approved: Seena aluminium rear underrun protection profile is type-approved according to Regulation ECE R.58-03



SEENA 2.0 PLUS

Fully integrated rear underrun protection device - number plate and light holders included

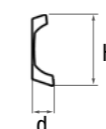
Code	L	H	d/d1	kg	std packaging
37 49 37 070	2100	339	154/168	20,1	
37 49 37 090	2200	339	154/168	21	
37 49 37 110	2300	339	154/168	21,85	
37 49 37 130	2400	339	154/168	22,7	



SEENA 2.0

Rear underrun protection

Code	L	H	d	kg	std packaging
37 49 35 070	2100	195	154	18,7	
37 49 35 090	2200	195	154	19,6	
37 49 35 110	2300	195	154	20,4	
37 49 35 130	2400	195	154	21,3	



SEENA 2.0 ACCESSORY PROFILE

Code	L	H	d	kg	std packaging
37 49 36 070	2100	253	78	7,1	
37 49 36 090	2200	253	78	7,4	
37 49 36 110	2300	253	78	7,7	
37 49 36 130	2400	253	78	8	

all dimensions are in mm

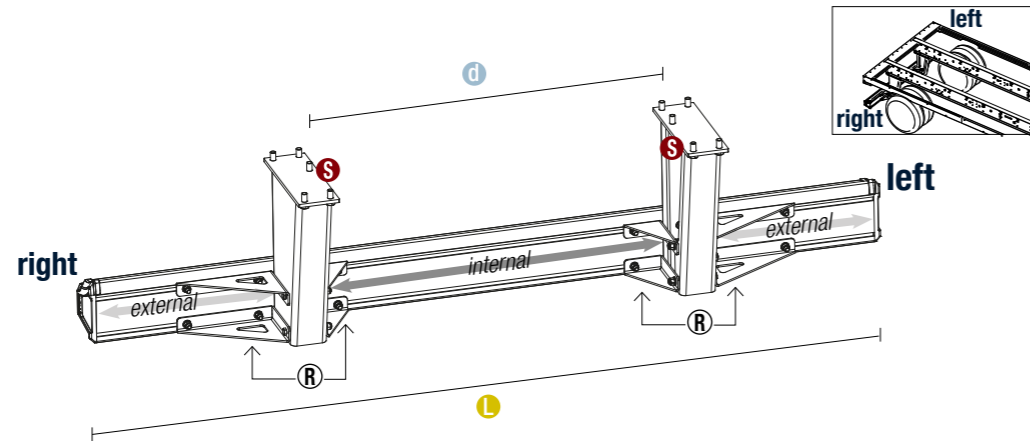
SEENA 2.0 SUPPORTS & REINFORCEMENTS

CONFIGURE SEENA 2.0

SEENA 2.0 rear underrun device is type approved according to the ECE R.58-03 regulation when installed using the supporting elements and brackets which are indicated in the Homologation document, available for download in the dedicated section of our website www.lagoaccessori.net
Compliance requires that precise bracket combinations be included in the installation based on the certain variables found on the vehicle; the following table can guide you in choosing the right elements for your vehicle.

By following these steps you will be led to a required configuration

- S** Choose **SUPPORT 2.0 bumper** type
- L** Choose **SEENA length**
- d** Choose **distance range between SUPPORTS**
- R** = Intersect **L** & **d** in the following table to find the suitable **REINFORCEMENT BRACKETS** and their positioning (internal and/or external)



S SUPPORT	L SEENA length	position	d distance between SUPPORTS		
			850-1199	1200-1350	1351-1450
S1 31 10 46 101	2100	internal	-	-	-
		external	R1 31 11 46 202	R2 31 11 46 203	R2 31 11 46 203
	2200	internal	-	-	-
		external	R1 31 11 46 202	R2 31 11 46 203	R2 31 11 46 203
	2300	internal	-	-	-
		external	R1 31 11 46 202	R2 31 11 46 203	R2 31 11 46 203
	2400	internal	-	-	-
		external	R1 31 11 46 202	R2 31 11 46 203	R2 31 11 46 203

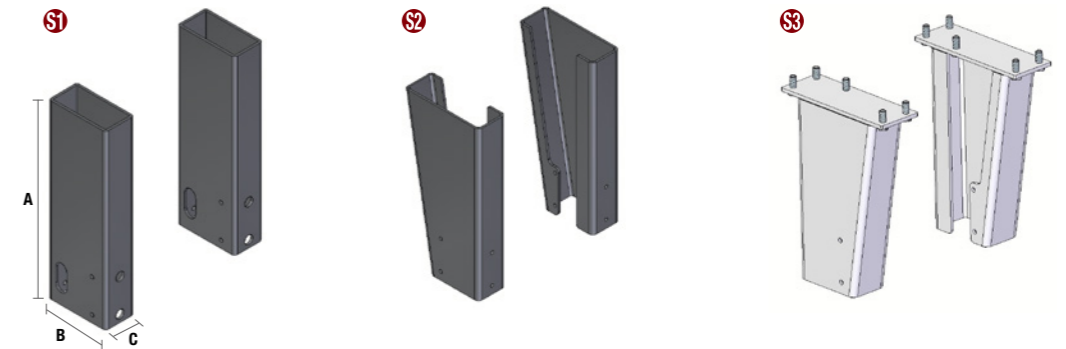
S SUPPORT	L SEENA length	position	d distance between SUPPORTS		
			850-1199	1200-1350	1351-1450
S2 31 10 46 102	2100	internal	R2 31 11 46 201	-	R1 31 11 46 201
		external	R1 31 11 46 201	R2 31 11 46 203	R2 31 11 46 201
	2200	internal	R2 31 11 46 201	-	R1 31 11 46 201
		external	R1 31 11 46 201	R2 31 11 46 203	R2 31 11 46 201
	2300	internal	R2 31 11 46 201	-	R1 31 11 46 201
		external	R1 31 11 46 201	R2 31 11 46 203	R2 31 11 46 201
	2400	internal	R2 31 11 46 201	-	R1 31 11 46 201
		external	R1 31 11 46 201	R2 31 11 46 203	R2 31 11 46 201

S SUPPORT	L SEENA length	position	d distance between SUPPORTS		
			850-1199	1200-1350	1351-1450
S3 31 10 46 103	2100	internal	R2 31 11 46 201	-	R1 31 11 46 201
		external	R1 31 11 46 201	R2 31 11 46 203	R2 31 11 46 201
	2200	internal	R2 31 11 46 201	-	R1 31 11 46 201
		external	R1 31 11 46 201	R2 31 11 46 203	R2 31 11 46 201
	2300	internal	R2 31 11 46 201	-	R1 31 11 46 201
		external	R1 31 11 46 201	R2 31 11 46 203	R2 31 11 46 201
	2400	internal	R2 31 11 46 201	-	R1 31 11 46 201
		external	R1 31 11 46 201	R2 31 11 46 203	R2 31 11 46 201

all dimensions are in mm

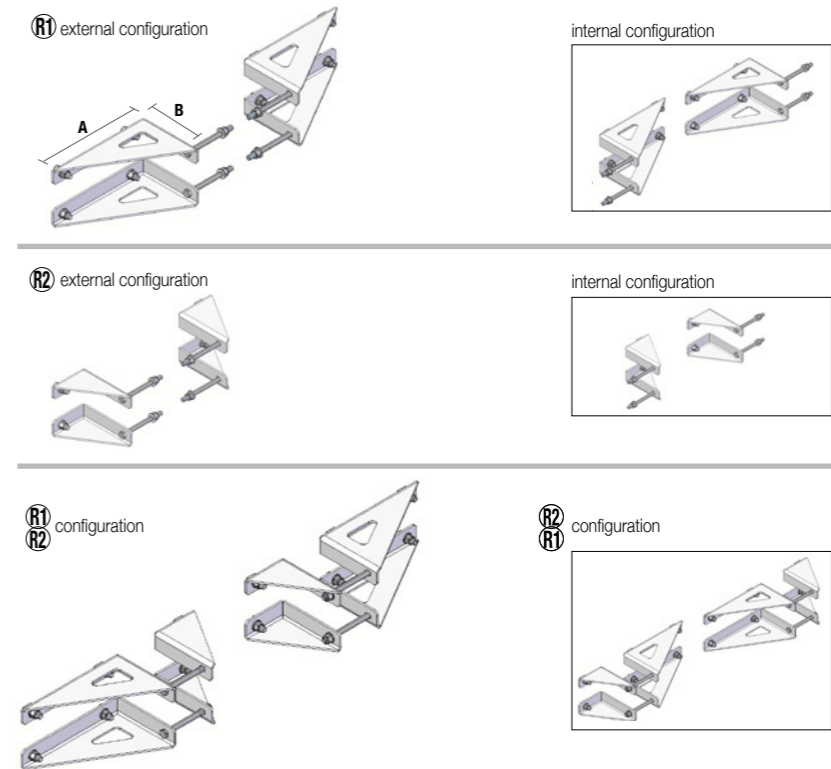
SEENA 2.0 SUPPORTS & REINFORCEMENTS

SUPPORTS



Code	description	fig.	A	B	C	sp	mat/finishing	kg	std packaging
31 10 46 101	Weldable	S1	600	200	100	8	Uncoated steel	40,6	
31 10 46 102	Weldable	S2	600	300	110	8	Uncoated steel	39,8	
31 20 46 103	Bolttable	S3	510	370	126	8	Black epoxy coating + Cataphoresis	41	

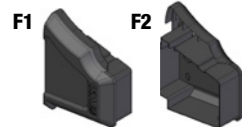
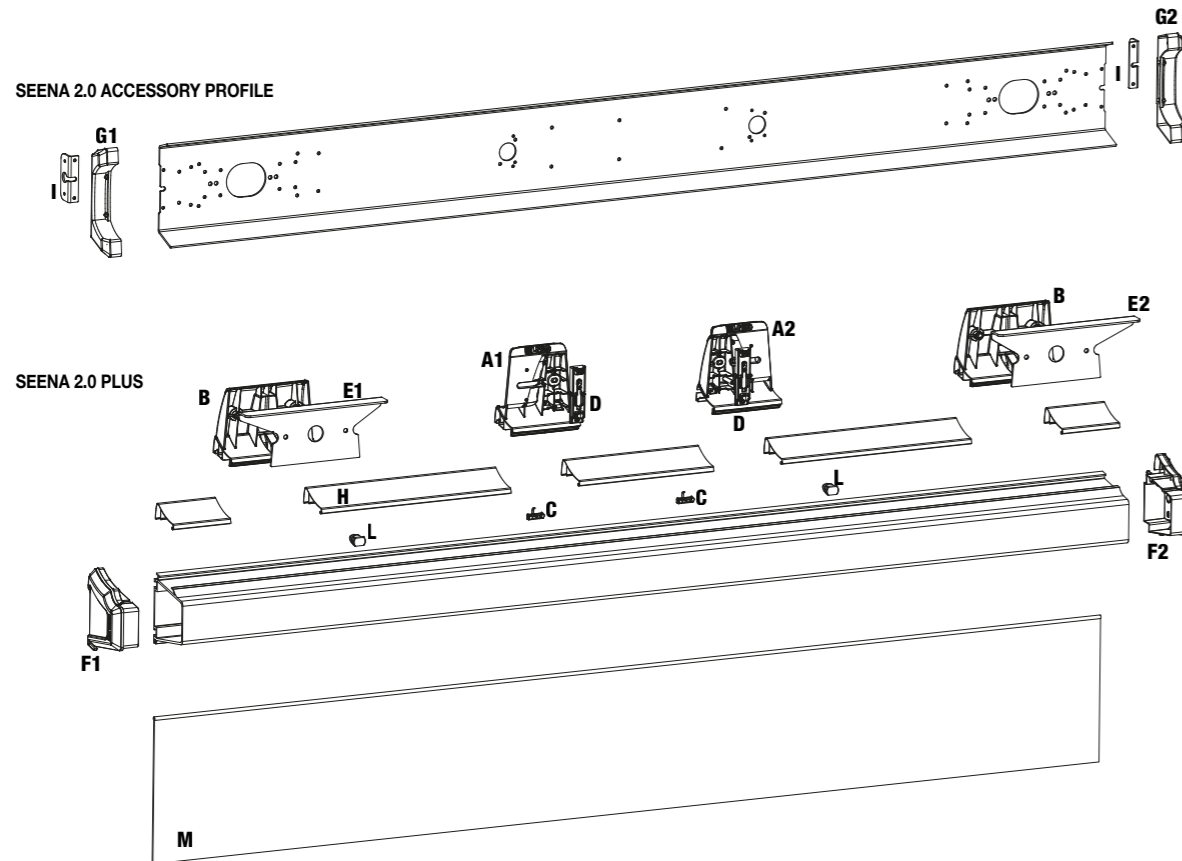
REINFORCEMENT BRACKETS



Code	description	fig.	A	B	C	sp	mat/finishing	kg	std packaging
31 20 46 202	Reinforcement bracket	R1	297,5	180		5	Black epoxy coating + Cataphoresis	8	
31 20 46 203	Reinforcement bracket	R2	117,5	180		5	Black epoxy coating + Cataphoresis	4,5	
31 20 46 201	Reinforcement bracket	R1 or R2					Black epoxy coating + Cataphoresis	11,8	

all dimensions are in mm

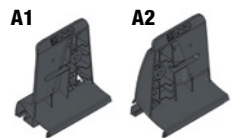
SEENA 2.0 ACCESSORIES AND SPARE PARTS



Code	description	kg	std packaging
39 05 15 001	End cap for SEENA 2.0 and SEENA 2.0 plus (LEFT)	0,2	
39 05 15 002	End cap for SEENA 2.0 and SEENA 2.0 plus (RIGHT)	0,2	



39 05 15 003	End Cap for SEENA 2.0 Accessory profile (LEFT)	0,1	
39 05 15 004	End Cap for SEENA 2.0 Accessory profile (RIGHT)	0,1	



73 05 13 002	Number plate holder module (RIGHT)	0,36	
73 05 13 001	Number plate holder module (LEFT)	0,36	



70 05 35 001	Tail lamp holder	0,5	
--------------	------------------	-----	--

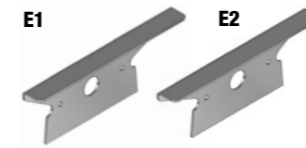


CIAPPEEN - Spring loaded number plate - Can be used for Seena rear underrun protection or others

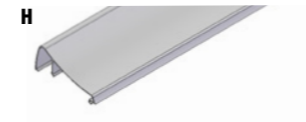
Code	description	kg	std packaging
73 60 11 061	Ciapeen - Acetalic resin spring loaded number plate holders	0.03	

all dimensions are in mm

SEENA 2.0 ACCESSORIES AND SPARE PARTS



Code	description	kg	std packaging
70 49 35 001	Aluminium tail lamp protector (LEFT)	0,5	
70 49 35 002	Aluminium tail lamp protector (RIGHT)	0,5	



Code	description	L	kg	std packaging
47 45 46 240	Cable duct cover	2400	1,5	



71 09 01 001	Cable gland for SEENA 2.0		0,01	
--------------	---------------------------	--	------	--



70 49 35 003	Aluminium outline marker lamp holder		0,07	
--------------	--------------------------------------	--	------	--



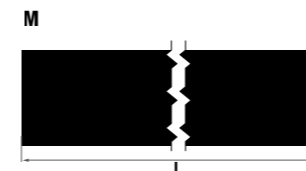
08 11 01 080	SEENA 2.0 mounting bolt 2.0 M12x35 CL.10.9		0,06	
--------------	--	--	------	--

SEENA 2.0 REAR MUDFLAP

PVC thickness 4mm

Colour: black (UV stabilized)

Personalized Versions are available upon request. One or more color silk screen printing.



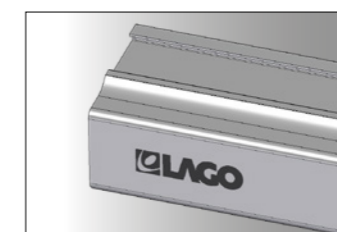
Code	description	L	thickness	kg	std packaging
13 70 74 005	Mudflap for SEENA 2.0 profile	2100	4	3,25	
13 70 74 004	Mudflap for SEENA 2.0 profile	2200	4	3,4	
13 70 74 001	Mudflap for SEENA 2.0 profile	2300	4	3,55	
13 70 74 002	Mudflap for SEENA 2.0 profile	2400	4	3,7	



all dimensions are in mm

MUDFLAP CUSTOMISATION

Silk screen printing
One or more colours upon request



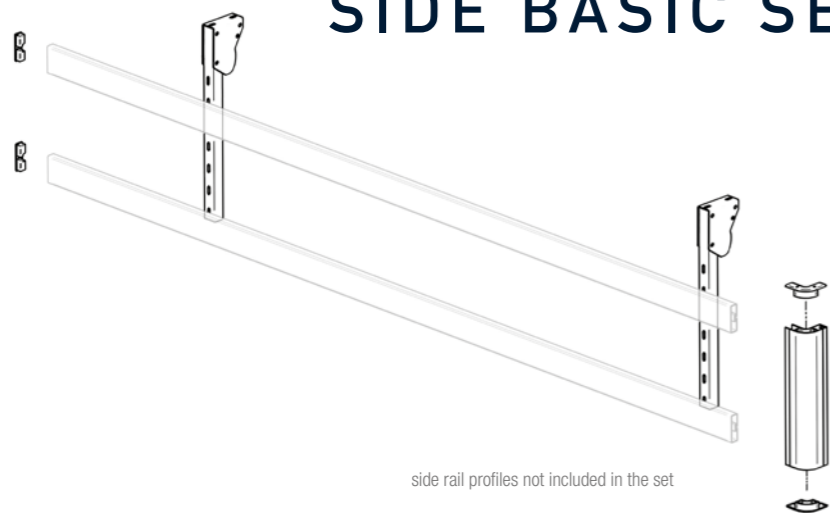
PROFILE CUSTOMIZATION

Laser printing

LATERAL UNDERRUN PROTECTION DEVICES



SIDE BASIC SET



side rail profiles not included in the set

Code 31 11 40 003 is a basic set suitable for equipment of one side of the trailer

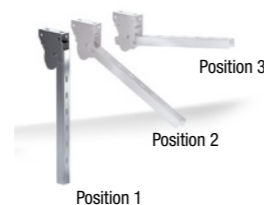
Code	description	Qty	kg	std packaging*
31 11 40 003	Side Basic set	1	7,8	1 box 800X160X130 mm*

Set composition:

31 11 40 001	Pair of spring loaded adjustable VIP brackets	1		
47 45 41 005	Anodized aluminium 6060 T6 corner element	1		
05 60 02 004	Corner element end caps 100x100	2		
05 60 02 003	Side rail profile end caps 100x30	2		

*side rail profiles not included in the set

VIP



Galvanized metal Steel S235JR

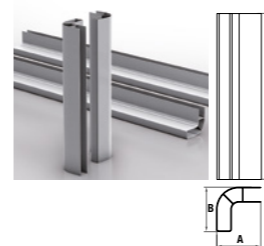
Vip Spring loaded adjustable bracket (3 position settings)

Code	description	kg	std packaging
31 11 40 001	Vip brackets (pair)	5,2	10 pcs

Check which specific product configuration is type-approved according to regulation ECE 73R01 under download section www.lagoaccessori.it

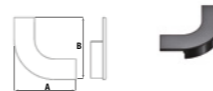
all dimensions are in mm

LATERAL UNDERRUN PROTECTION DEVICES



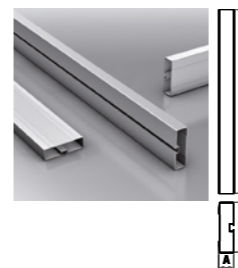
Anodized aluminium 6060 T6

Code	description	A	B	L	kg	std packaging
47 45 41 005	Anodized aluminium 6060 T6 corner element	100	100	500	1,1	bulk



Nylon TA6

Code	description	A	B	kg	std packaging
05 60 02 004	Corner element end cap 100x100	100	100	0,2	bulk



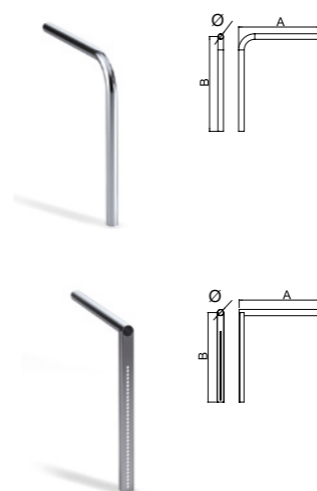
Anodized aluminium 6060 T6

Code	description	A	B	L	kg	std packaging
47 45 40 027	Side rail profile	30	100	3250	3,9	bulk
47 45 40 045	Side rail profile	30	100	6500	7,8	bulk
47 45 40 060	Side rail profile	30	100	7500	9	bulk



Rubber

Code	description	A	B	kg	std packaging
05 60 02 003	Side rail profile end cap	30	100	0,2	bulk



Code	description	A	B	Ø	thickness	kg	std packaging
42 11 10 001	90° Fix bent tube	805	805	54	2	4,1	bulk

Code	description	A	B	Ø	thickness	kg	std packaging
42 11 10 003	90° fix tube with installation slots	800	800	54	2	4,5	bulk

Check which specific product configuration is type-approved according to regulation ECE 73R01 under download section www.lagoaccessori.it

all dimensions are in mm

Concept: Grevi
Printed in Italy: Grafiche Baggio
Photo: Giancarlo Gennaro - The Studio
May 2023

LAGO Accessori srl reserves
the right to make any change
or improvement to their
products and to this document
at any time and without any
prior notification



LAGO Accessori srl
Via 1° Maggio, 20
35014 Fontaniva (Padova) ITALY
Tel. +39 049 594 09 32
info@lagoaccessori.net
www.lagoaccessori.it

LAGOACCESSORI.IT